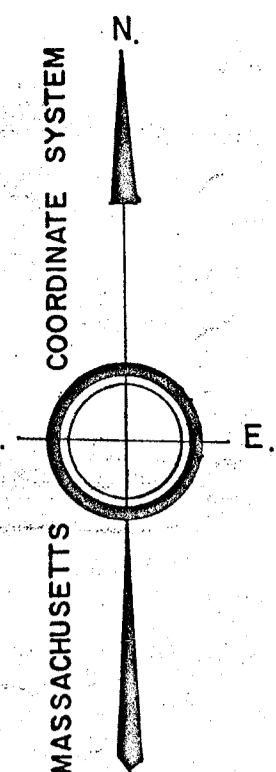
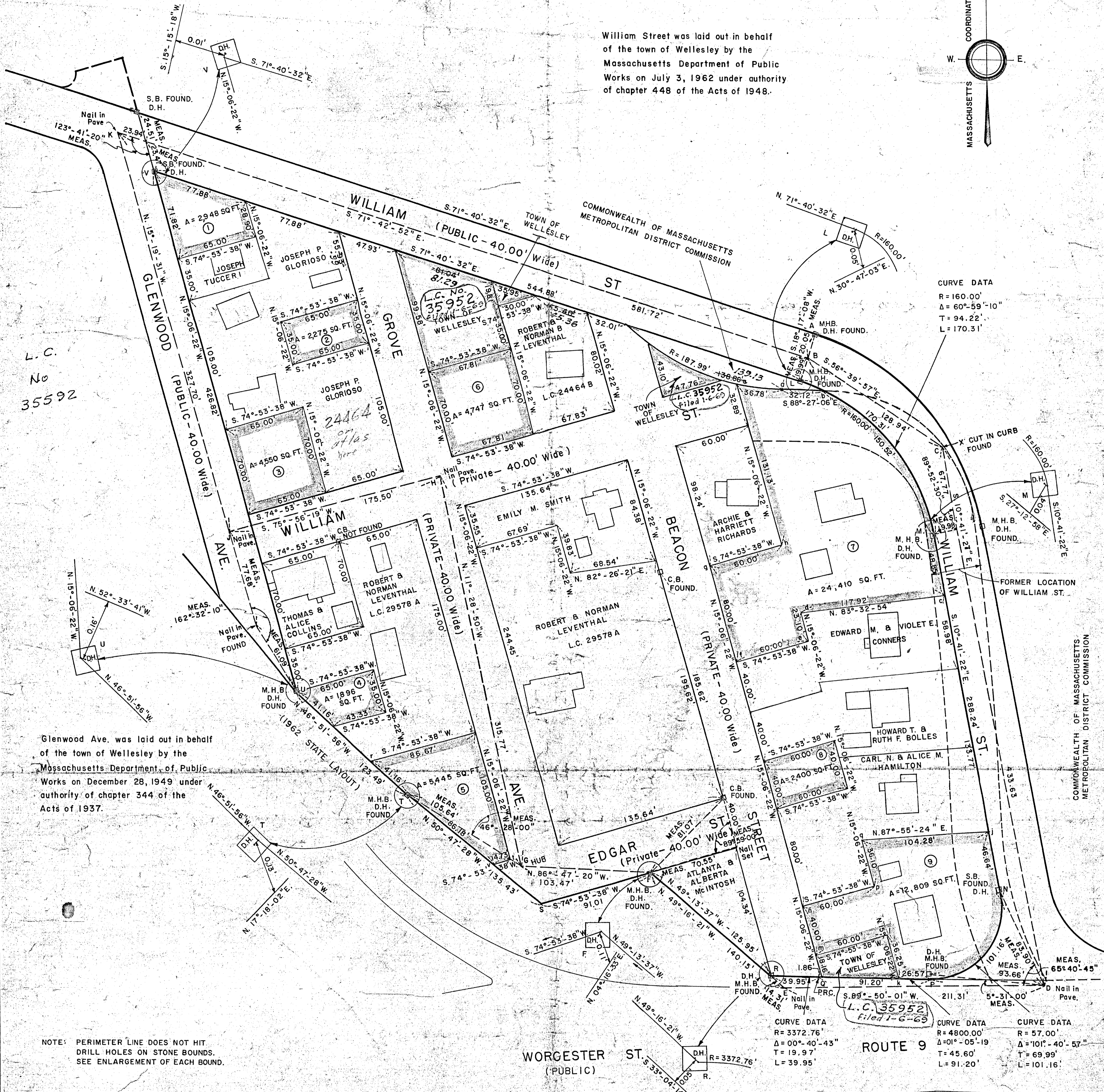


35586A



William Street was laid out in behalf of the town of Wellesley by the Massachusetts Department of Public Works on July 3, 1962 under authority of chapter 448 of the Acts of 1948.



L.C. No 35592

Glenwood Ave. was laid out in behalf of the town of Wellesley by the Massachusetts Department of Public Works on December 28, 1949 under authority of chapter 344 of the Acts of 1937.

NOTE: PERIMETER LINE DOES NOT HIT DRILL HOLES IN STONE BOUNDS. SEE ENLARGEMENT OF EACH BOUND.

SEE ADDITIONS OR CHANGES Re Corrections On Sketches filed 8-26-68 IN ENGINEERING FILES R.C.C.

PLAN OF LAND IN WELLESLEY

Scale 40 feet to an inch  
Alphonse L. Savignac, Surveyor for  
Schoenfeld Associates, Inc.  
210 South St. Boston, Mass.

I certify that this actual survey was made on the ground in accordance with the Land Court instructions of 1959 between March 4 1966 and October 30, 1967.

November 17, 1967

Alphonse L. Savignac  
296 WOBURN ST.  
WILMINGTON, MASS.

35586A  
PLAN  
Traverse filed  
Atlas  
Drawn by  
Met. by  
Inspected by  
Approved

35952A  
DEUCEE PLAN  
Traverse filed  
Atlas  
Drawn by  
Met. by  
Inspected by  
Approved

35586A  
MAY BE FILED  
4-16-68  
R.C.C.  
Wellesley Pl. 12, 3, 4  
No prints needed

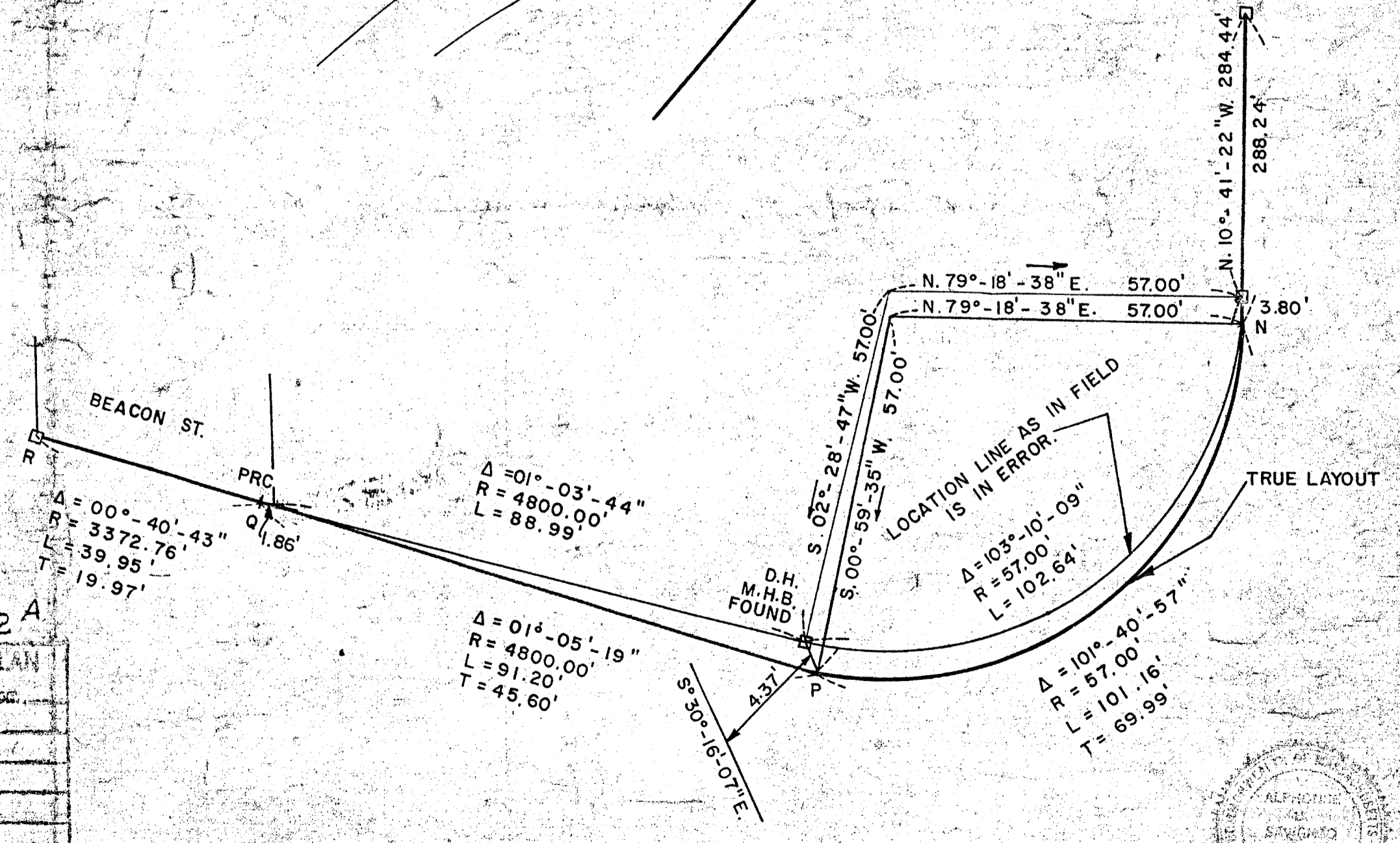
WORCHESTER ST (PUBLIC)

CURVE DATA  
R = 3372.76'  
Δ = 0°-40'-43"  
T = 19.97'  
L = 39.95'

ROUTE 9

CURVE DATA  
R = 4800.00'  
Δ = 0°-05'-19"  
T = 45.60'  
L = 91.20'

CURVE DATA  
R = 57.00'  
Δ = 101°-40'-57"  
T = 69.99'  
L = 101.16'



I hereby certify that the property lines shown on this plan are the lines dividing existing ownerships, and the lines of the streets and ways shown are those of public or private streets or ways already established, and that no new lines for division of existing ownership or for new ways are shown.

Alphonse L. Savignac

