

Atlas Capital Corporation  
Ld. Ct. Confirmation 31893 A

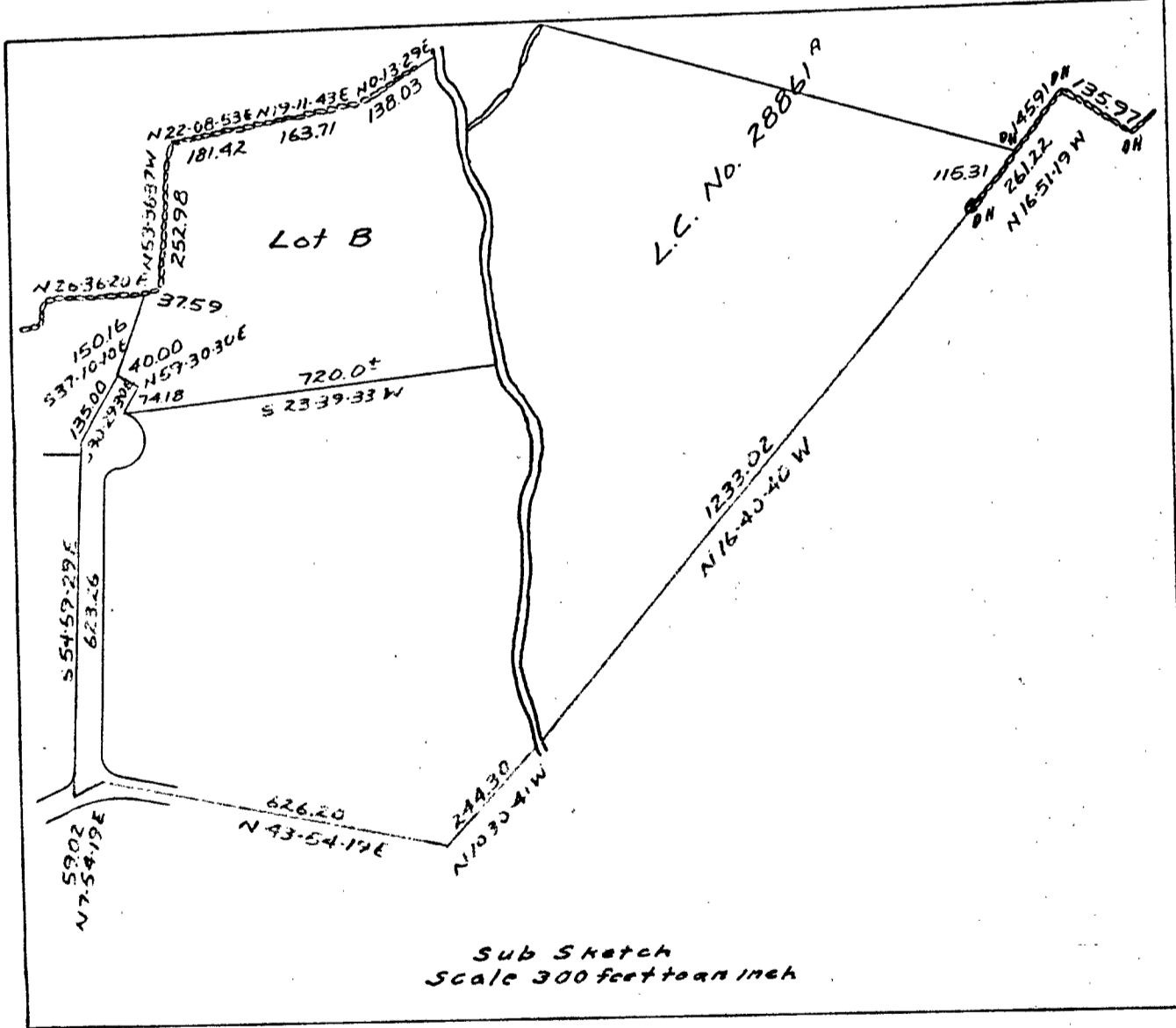
Michael Campanelli, Trustee Campanelli Trust  
L.C. No. 33278

Blue Hill Cemetery Inc.

Textron Industries Inc.  
L.C. No. 28861 B

Lot B  
7.0 Acres

Wildwood Estates of Braintree Inc.



Sub Sketch  
Scale 300 feet to an inch

Plan of Land in Braintree, Mass.  
Scale 80 feet to an inch  
Dec. 12, 1968

Ernest W. Branch Inc., Civil Engineers  
Adams Building, 1354 Hancock St Quincy

APPROVAL UNDER THE  
EMERGENCY ACT  
Joseph M. Magaldi  
TOWN OF BRAintree

I certify that this actual survey was made on  
the ground in accordance with Land Court  
instructions of 1959

Dec. 12, 1968 Robert S. Booth Jr. Engineer

