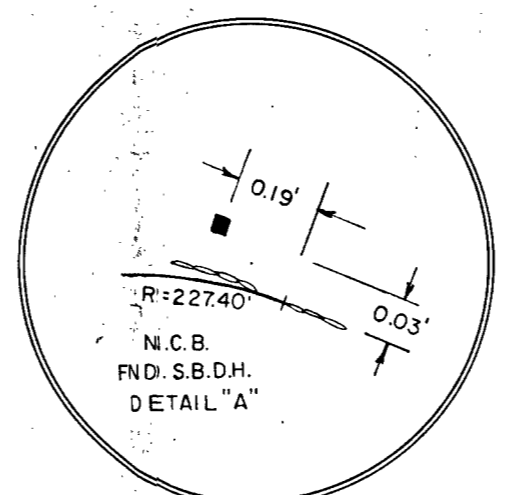
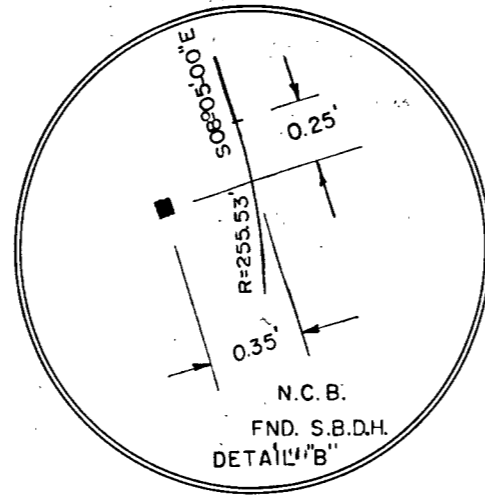
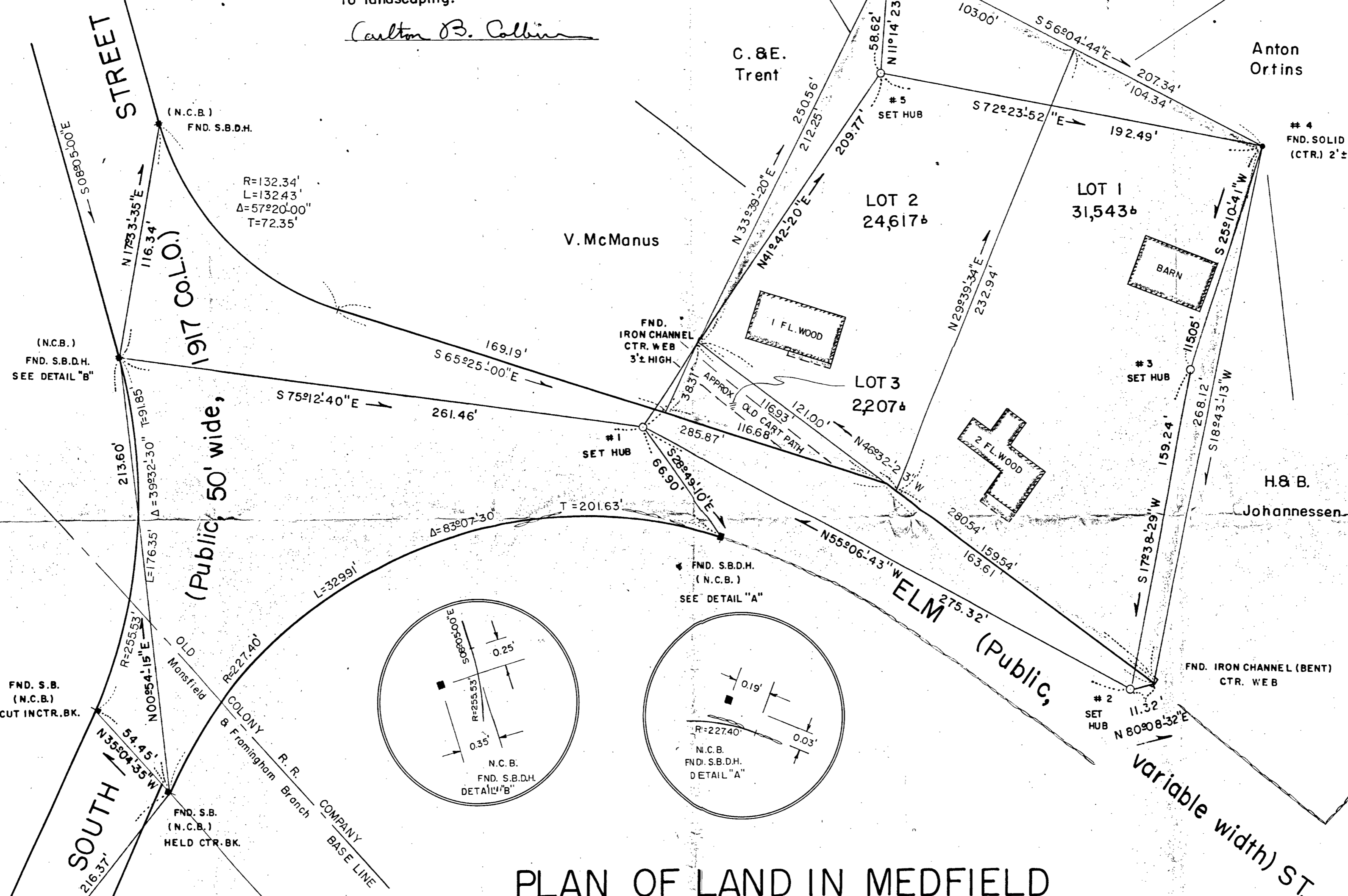


I hereby certify that all the monuments shown on this plan were recovered in good condition on Sept. 12, 1968, and the old cart path is no longer evident due to landscaping.

Carlton B. Colburn



PLAN OF LAND IN MEDFIELD

Scale 40 feet to an inch

COLBURN ENGINEERING

SEPTEMBER 23, 1968

I certify that this actual survey was made on the ground in accordance with the Land Court Instructions of 1959 on April 22, 1961 and December 22, 1962.

Carlton B. Colburn
454 Main St., Hudson, Mass.



Land Court Plan # 17262-A
By E. Worthington, July 5, 1939

Planning Board approval under the Subdivision Control Law not required.
MEDFIELD PLANNING BOARD

J. A. Prud'homme
Burgess P. Standley
Richard S. Esquella

Date: *Nov 4, 1968*