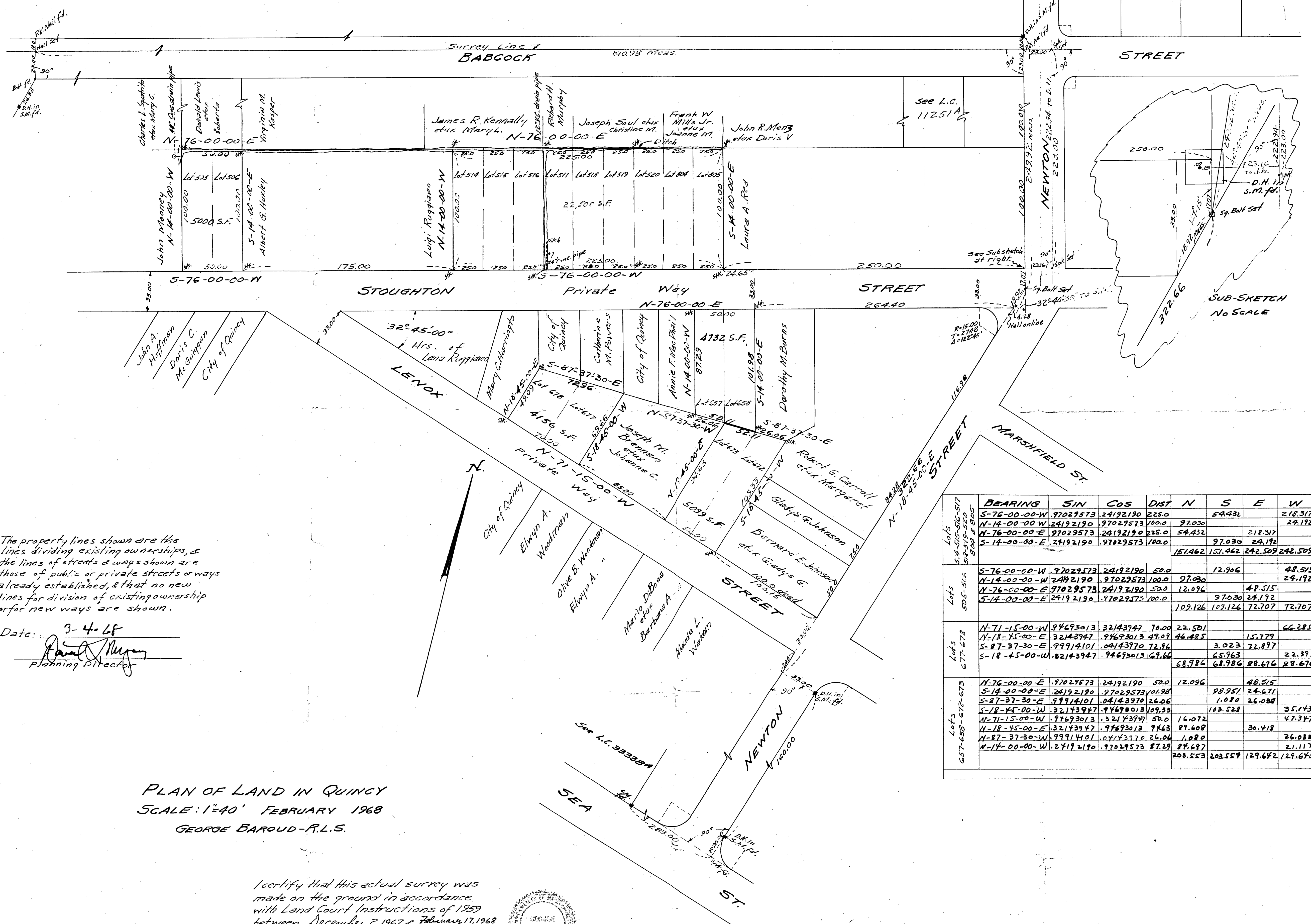


See L.C.
25489A

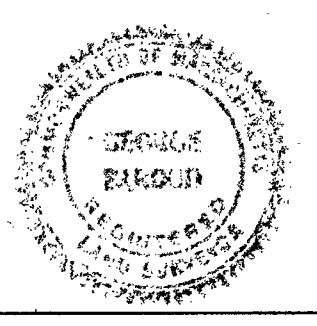


The property lines shown are the lines dividing existing ownerships, & the lines of streets & ways shown are those of public or private streets & ways already established, & that no new lines for division of existing ownership or for new ways are shown.

Date: 3-4-68
Paul M. Ryan
 Planning Director

PLAN OF LAND IN QUINCY
 SCALE: 1"=40' FEBRUARY 1968
 GEORGE BAROUD-R.L.S.

I certify that this actual survey was made on the ground in accordance with Land Court Instructions of 1959 between December 2, 1967 & February 17, 1968
George Baroud
 24 Chase St. Quincy, Mass.



	BEARING	SIN	COS	DIST	N	S	E	W
Lots 514-515-516-517 518-519-520 504 & 805	S-76-00-00-W	.97029573	.24192190	225.0		54.432		218.317
	N-14-00-00-W	.24192190	.97029573	100.0	97.030			24.192
	N-76-00-00-E	.97029573	.24192190	225.0	54.432		218.317	
	S-14-00-00-E	.24192190	.97029573	100.0		97.030		24.192
		151.462	151.462	242.509	242.509			
Lots 505-514	S-76-00-00-W	.97029573	.24192190	50.0		12.906		48.515
	N-14-00-00-W	.24192190	.97029573	100.0	97.030			24.192
	N-76-00-00-E	.97029573	.24192190	50.0	12.096		48.515	
	S-14-00-00-E	.24192190	.97029573	100.0		97.030		24.192
		109.126	109.126	72.707	72.707			
Lots 677-678	N-71-15-00-W	.94693013	.32143947	70.00	22.501			66.285
	N-18-45-00-E	.32143947	.94693013	49.09	46.485		15.779	
	S-87-37-30-E	.99914101	.04143970	72.86		3.023	72.897	
	S-18-45-00-W	.32143947	.94693013	69.66		68.986	88.676	22.391
		68.986	68.986	88.676	88.676			
Lots 657-658-676-678	N-76-00-00-E	.97029573	.24192190	50.0	12.096		48.515	
	S-14-00-00-E	.24192190	.97029573	101.98		98.957	24.671	
	S-87-37-30-E	.99914101	.04143970	26.06		1.080	26.038	
	S-18-45-00-W	.32143947	.94693013	109.33		103.528		35.143
	N-71-15-00-W	.94693013	.32143947	50.0	16.072		47.347	
	N-18-45-00-E	.32143947	.94693013	94.63	89.608		30.418	
	N-87-37-30-W	.99914101	.04143970	26.06	1.080		26.038	
N-14-00-00-W	.24192190	.97029573	87.27	88.697		21.117		
		203.553	203.553	129.642	129.642			