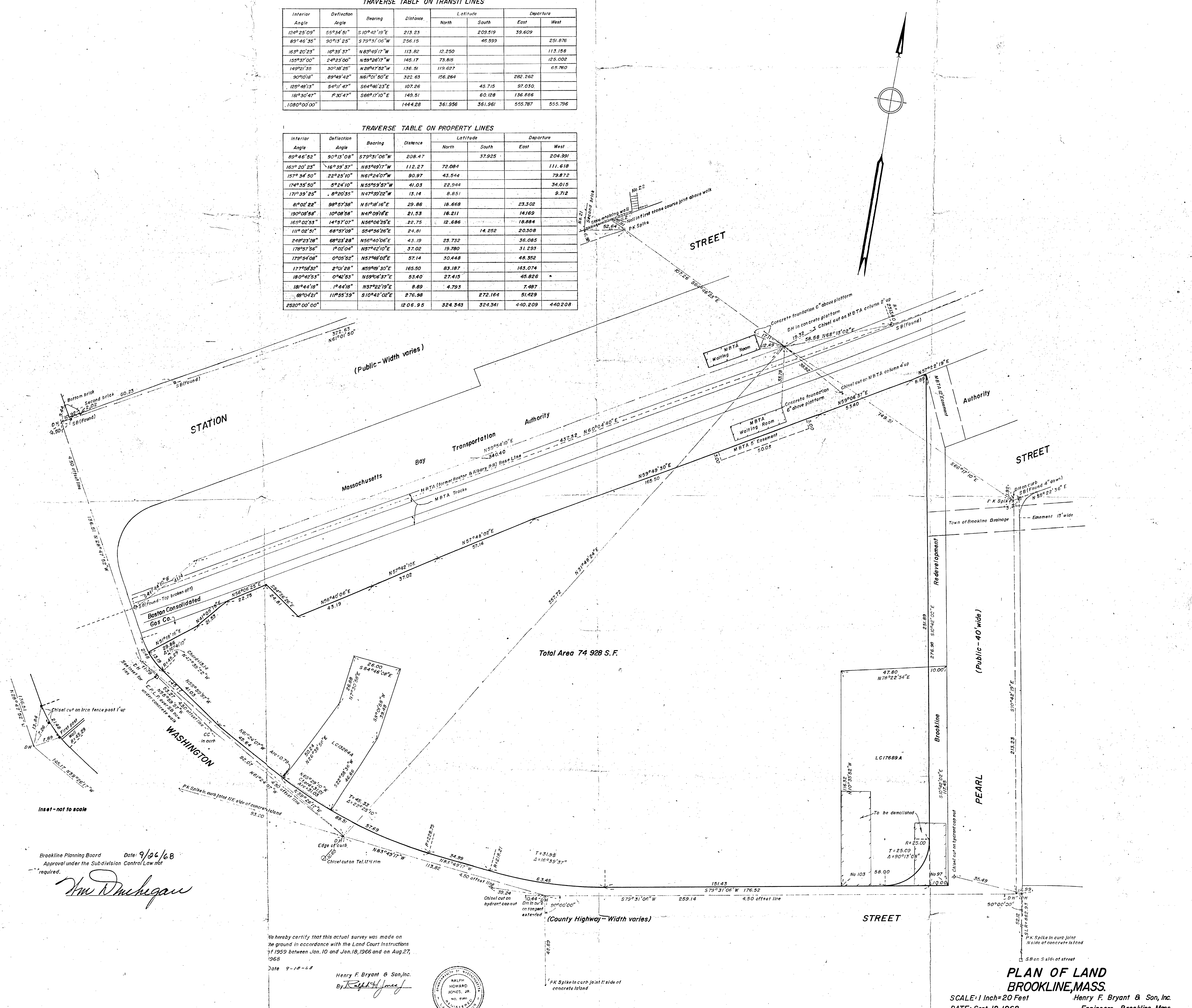


TRAVERSE TABLE ON TRANSIT LINES

Interior Angle	Deflection Angle	Bearing	Distance	Latitude		Departure	
				North	South	East	West
124° 25' 09"	55° 34' 51"	S 10° 42' 19" E	213.23		209.519	39.609	
89° 46' 35"	90° 13' 25"	S 79° 31' 06" W	256.15		46.599		251.876
163° 20' 23"	16° 33' 37"	N 83° 49' 17" W	113.82	12.250			113.158
155° 37' 00"	2° 23' 00"	N 29° 26' 17" W	145.17	73.815			125.002
149° 21' 35"	30° 48' 25"	N 26° 47' 52" W	156.51	119.627			65.760
90° 10' 18"	89° 49' 42"	N 61° 01' 50" E	322.63	156.264			282.262
125° 48' 13"	54° 11' 47"	S 64° 46' 23" E	107.26		45.715		97.030
181° 30' 47"	1° 30' 47"	S 86° 17' 10" E	149.51		60.128		136.886
1080° 00' 00"			1444.28	361.956	361.961	555.787	555.796

TRAVERSE TABLE ON PROPERTY LINES

Interior Angle	Deflection Angle	Bearing	Distance	Latitude		Departure	
				North	South	East	West
89° 46' 52"	90° 13' 08"	S 79° 31' 06" W	208.47		37.925		204.391
163° 20' 23"	16° 33' 37"	N 83° 49' 17" W	112.27	72.084			111.618
157° 34' 50"	22° 25' 10"	N 61° 24' 07" W	90.97	43.544			79.872
174° 33' 50"	5° 04' 10"	N 55° 59' 57" W	41.03	22.944			34.015
171° 39' 25"	8° 20' 35"	N 47° 39' 22" W	13.14	8.651			9.712
81° 02' 22"	98° 57' 38"	N 51° 18' 16" E	29.86	18.668			23.302
190° 08' 58"	10° 08' 58"	N 4° 08' 18" E	21.53	16.211			14.169
165° 02' 53"	14° 57' 07"	N 56° 06' 25" E	22.75	12.686			18.884
111° 02' 51"	68° 57' 09"	S 54° 36' 26" E	24.01		14.252		20.308
248° 23' 28"	68° 23' 28"	N 56° 40' 06" E	43.19	23.732			36.085
178° 57' 56"	1° 02' 04"	N 57° 42' 10" E	37.02	19.780			31.293
179° 54' 08"	0° 05' 52"	N 57° 48' 02" E	57.14	30.448			48.352
177° 56' 32"	2° 01' 28"	N 55° 49' 30" E	165.50	83.187			143.074
180° 42' 53"	0° 42' 53"	N 59° 06' 37" E	53.40	27.415			45.826
181° 44' 18"	1° 44' 18"	N 57° 22' 19" E	8.89	4.793			7.487
60° 42' 11"	111° 35' 39"	S 10° 42' 02" E	276.98		272.164		51.429
2520° 00' 00"			1206.95	324.343	324.341	440.209	440.208



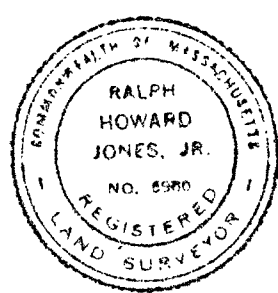
Total Area 74 928 S.F.

Brookline Planning Board Date: 9/26/68
 Approval under the Subdivision Control Law not required.

Tom Duchegau

We hereby certify that this actual survey was made on the ground in accordance with the Land Court Instructions of 1959 between Jan. 10 and Jan. 18, 1966 and on Aug. 27, 1968
 Date 9-18-68

Henry F. Bryant & Son, Inc.
 By *Ralph H. Jones, Jr.*



PLAN OF LAND
BROOKLINE, MASS.
 SCALE: 1 Inch = 20 Feet
 DATE: Sept. 18, 1968
 Henry F. Bryant & Son, Inc.
 Engineers Brookline, Mass.