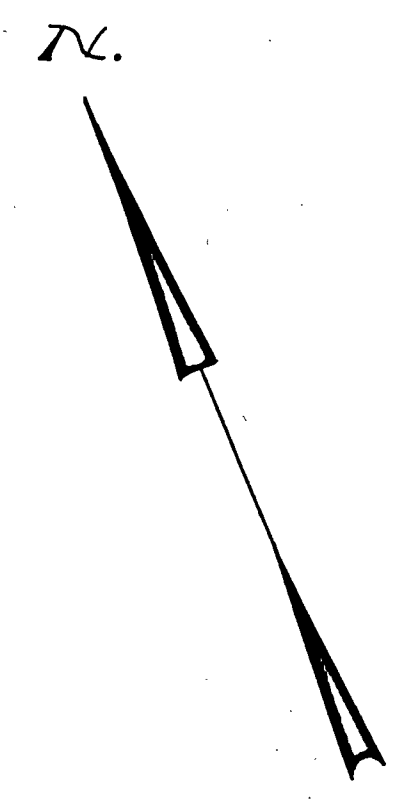
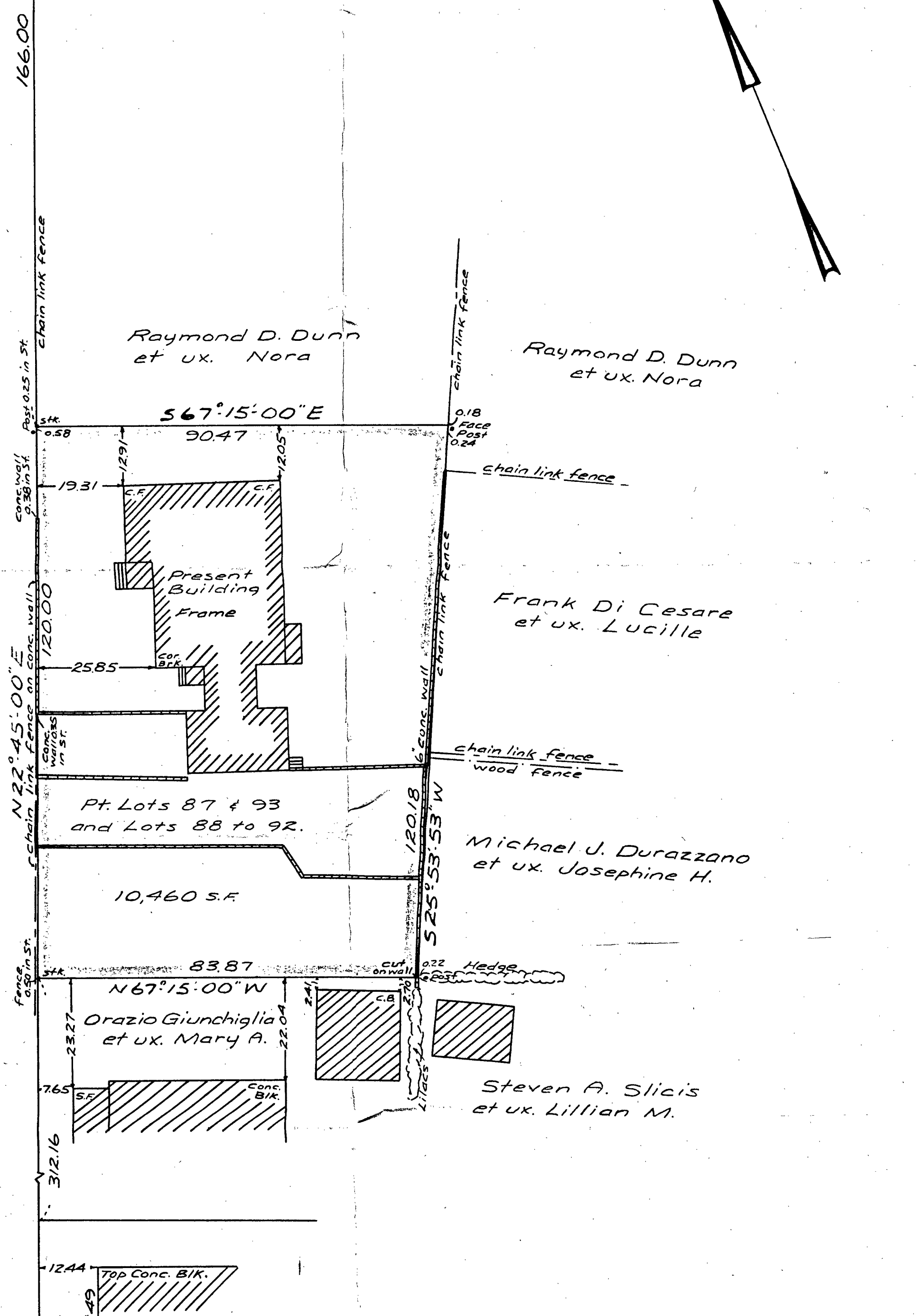


MURDOCK (Public - 40.00 Ft. Wide) AVENUE  
 185.27  
 83°15'  
 90°  
 16.00  
 S.B. Fd.



N 22° 45' 00" E  
 EDINBORO (Public 40.00 Ft. Wide) ROAD



I hereby certify that the property lines shown on this plan are the lines dividing existing ownerships and the lines of the streets and ways shown are those of public or private streets or ways already established and that no new lines for division of existing ownership or for new ways are shown.

Robert S. Booth Jr.  
 Reg. Land Surveyor

Plan of Land in Quincy, Mass.  
 Scale 20 feet to an inch  
 July 15, 1968  
 Ernest W. Branch Inc., Civil Engineers  
 Adams Building, 1354 Hancock St., Quincy

I certify that this plan was made in accordance with the Land Court Instructions of 1959.  
 July 15, 1968 R. S. Booth Jr. C.E.

Date: 7-23-68  
 David J. Myers  
 Director of Planning

