

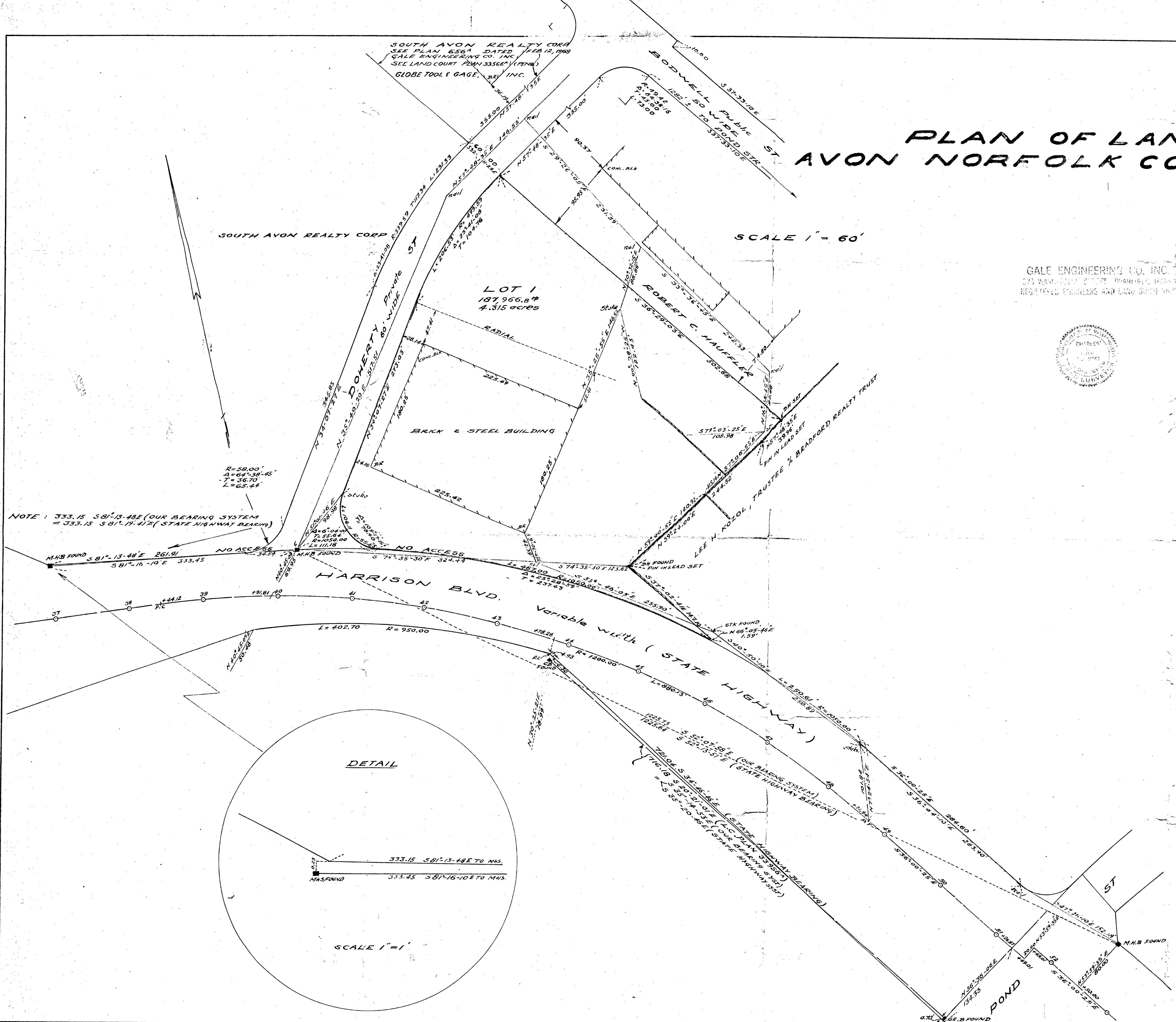
PLAN OF LAND IN AVON NORFOLK COUNTY MASS

FEBRUARY 26TH 1968
 AMENDED MAY 7TH 1968

GALE ENGINEERING CO., INC.
 275 MAIN STREET, PHOTODUPLICATION
 REGISTERED ENGINEERS AND LAND SURVEYORS

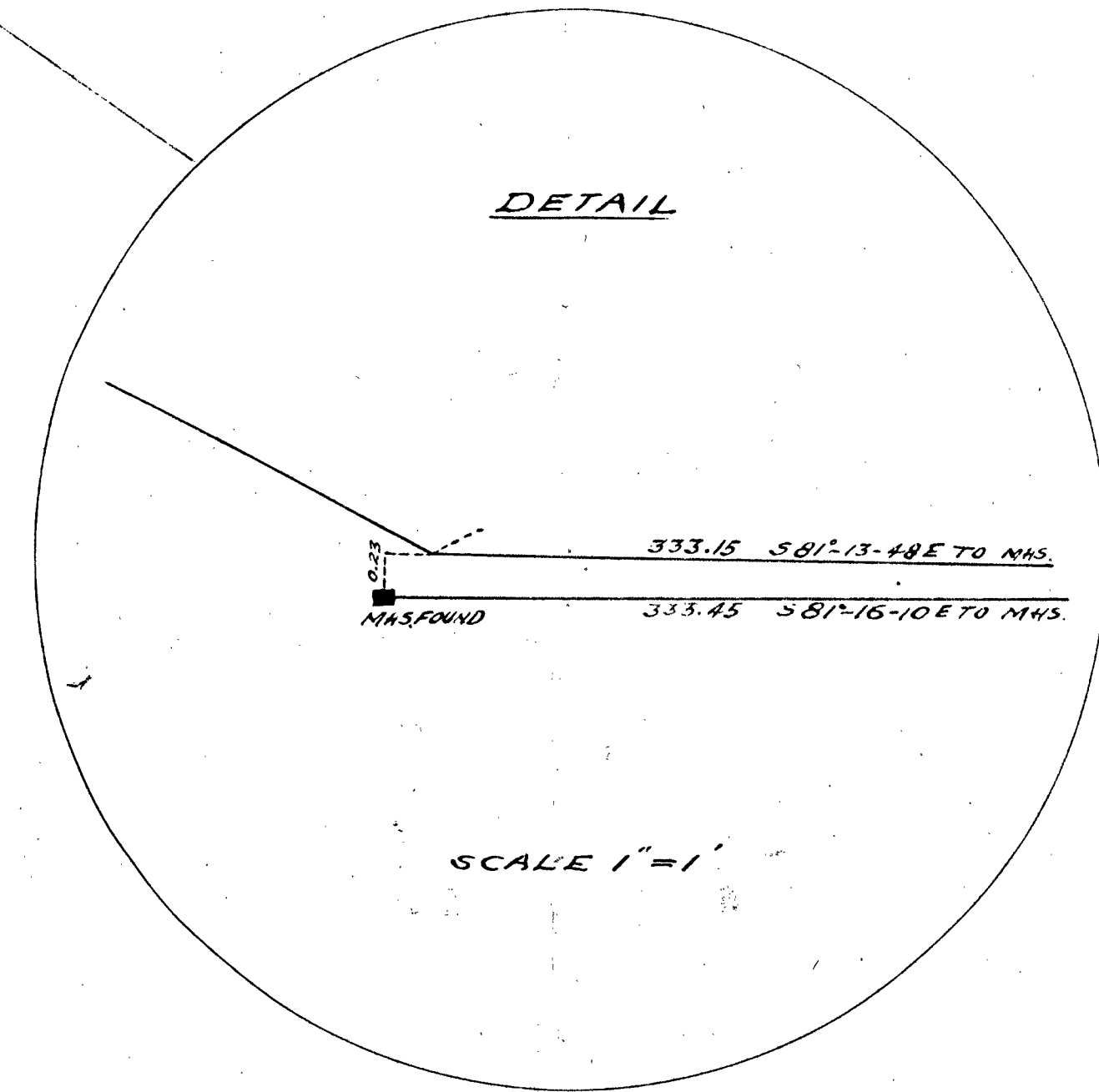


SCALE 1" = 60'



NOTE: 333.15 S 81° 13' 48" E (OUR BEARING SYSTEM)
 = 333.15 S 81° 13' 41/2" (STATE HIGHWAY BEARING)

R=58.00'
 A=64° 38' 45"
 T=56.70'
 L=65.44'



REPERT TO ALL PARTIES OF RECORD
 THIS PLAN AND THE RECORD THEREON
 ARE HEREBY FILED FOR RECORD
 BETWEEN FEB 9 1968 FEB 16 1968

[Signature]

"I hereby certify that the property lines shown on this plan are the result of a survey conducted on the ground in accordance with the laws of the State of Massachusetts and that the same are true and correct to the best of my knowledge and belief."

[Signature]

NO BOUNDS CAN BE SET DUE TO CONSTRUCTION
 IN THE ENTIRE AREA