

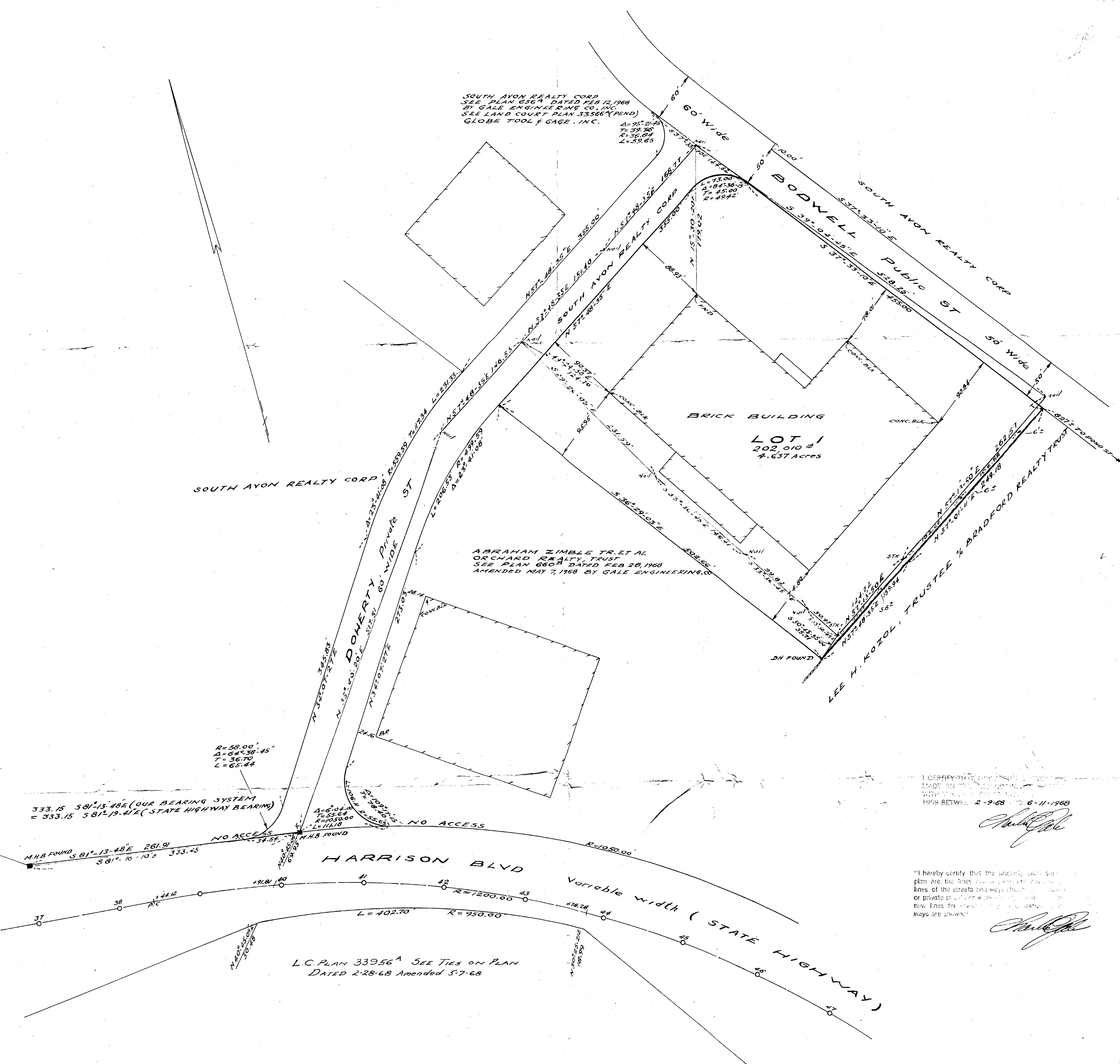
35692

PLAN OF LAND IN AVON NORFOLK COUNTY MASS.

SCALE 1" = 60'

JUNE 13TH, 1968

GALE ENGINEERING CO. INC.
373 WASHINGTON STREET, BRAintree, MASS.
REGISTERED ENGINEERS AND LAND SURVEYORS



SOUTH AVON REALTY CORP.
SEE PLAN 656^A DATED FEB 12, 1968
BY GALE ENGINEERING CO. INC.
SEE LAND COURT PLAN 33566^A (PEND)
GLOBE TOOL & GAGE, INC.
A=25° 21' 30"
T=39.90'
L=36.84'
L=59.65'

ABRAHAM ZIMBLE TR. ET AL
ORCHARD REALTY TRUST
SEE PLAN 660^A DATED FEB 28, 1968
AMENDED MAY 7, 1968 BY GALE ENGINEERING CO.

I HEREBY CERTIFY THAT THIS PLAN WAS MADE BY ME OR UNDER MY CLOSE PERSONAL SUPERVISION AND THAT I AM A LICENSED SURVEYOR IN THE STATE OF MASSACHUSETTS.
1968 BETWEEN 2-9-68 AND 6-11-1968

Charles Gale

"I hereby certify that the property lines shown on this plan are the lines shown on the ground and that the lines of the streets and ways shown on this plan are or private streets or ways shown on the ground or new lines for streets or ways shown on the ground. Ways are shown."

Charles Gale

L.C. PLAN 33956^A SEE TIES ON PLAN
DATED 2-28-68 Amended 5-7-68