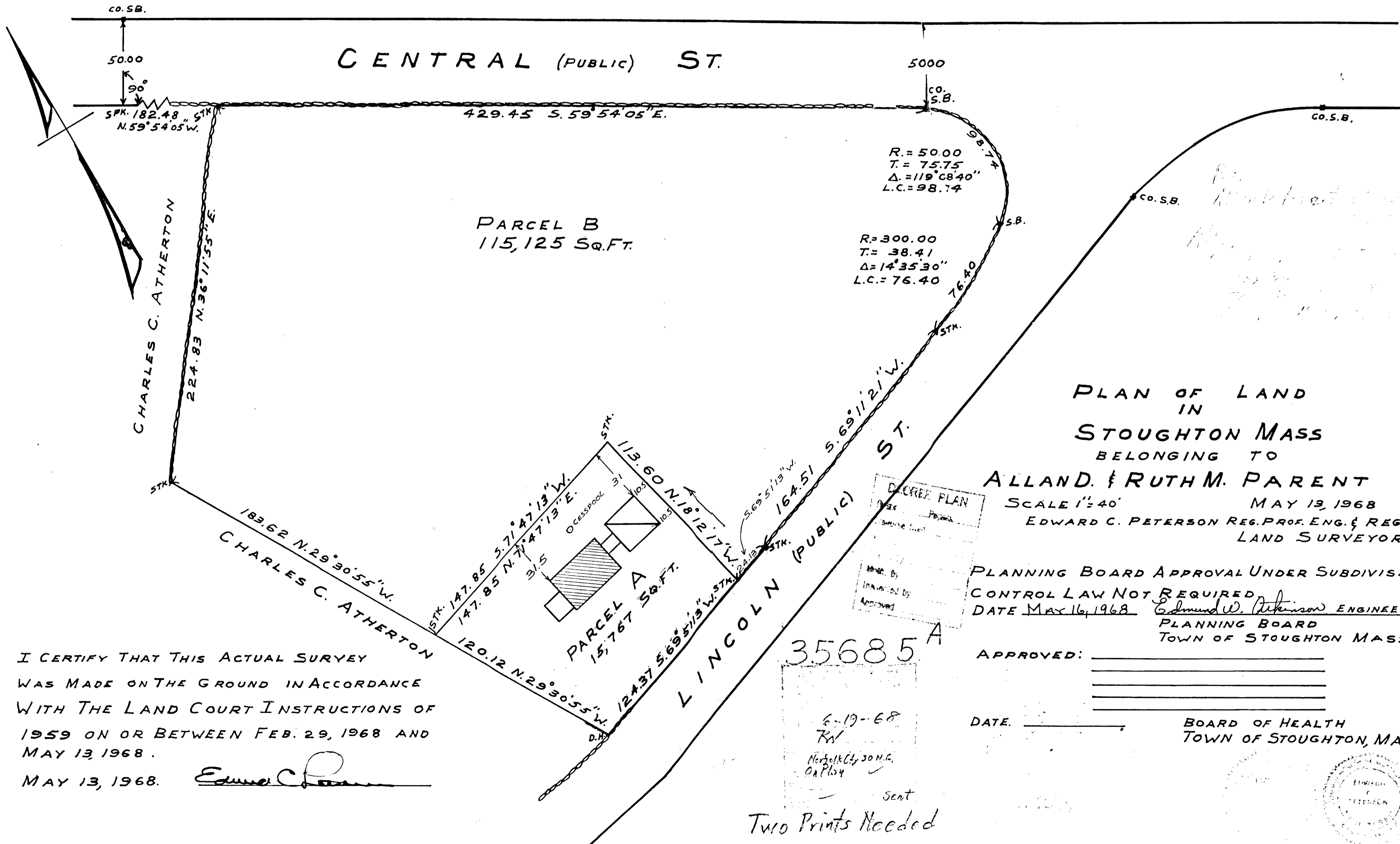


PARCEL A					
DIST.	BEARING	LAT.		DEP.	
		N.	S.	E.	W.
124.37	S. 69° 51' 13" W.		42.834		116.770
120.12	N. 29° 30' 55" W.	104.531			59.177
147.85	N. 71° 47' 13" E.	46.210		0.442	
113.60	S. 18° 12' 47" E.		107.907	15.505	
		150.741	150.741	15.947	175.947

PARCEL B					
DIST.	BEAR.	LAT.		DEP.	
		N.	S.	E.	W.
505.20	S. 59° 54' 05" E.		259.353	437.081	
114.16	S. 53° 14' 35" W.		68.316		91.461
38.41	S. 67° 50' 05" W.		14.492		35.570
164.51	S. 65° 11' 21" W.		58.448		153.775
24.13	S. 62° 51' 13" W.		8.311		22.652
113.60	N. 18° 12' 47" W.	107.908			35.503
147.85	S. 71° 47' 13" W.		46.210		140.441
183.62	N. 29° 30' 55" W.	159.790			90.460
224.83	N. 36° 11' 55" E.	181.432		132.781	
		449.130	449.130	569.862	569.862



PLAN OF LAND
IN
STOUGHTON MASS
BELONGING TO
ALLAND. & RUTH M. PARENT
SCALE 1" = 40'
MAY 13, 1968
EDWARD C. PETERSON REG. PROF. ENG. & REG.
LAND SURVEYOR.

PLANNING BOARD APPROVAL UNDER SUBDIVISION
CONTROL LAW NOT REQUIRED
DATE MAY 16, 1968
Edmund W. Robinson ENGINEER.
PLANNING BOARD
TOWN OF STOUGHTON MASS.

APPROVED: _____
DATE: _____
BOARD OF HEALTH
TOWN OF STOUGHTON, MASS.

I CERTIFY THAT THIS ACTUAL SURVEY
WAS MADE ON THE GROUND IN ACCORDANCE
WITH THE LAND COURT INSTRUCTIONS OF
1959 ON OR BETWEEN FEB. 29, 1968 AND
MAY 13, 1968.
Edmund C. Peterson

6-19-68
RW
Noted by SO.M.C.
on Plot
Sent
Two Prints Needed

35685A

35685A