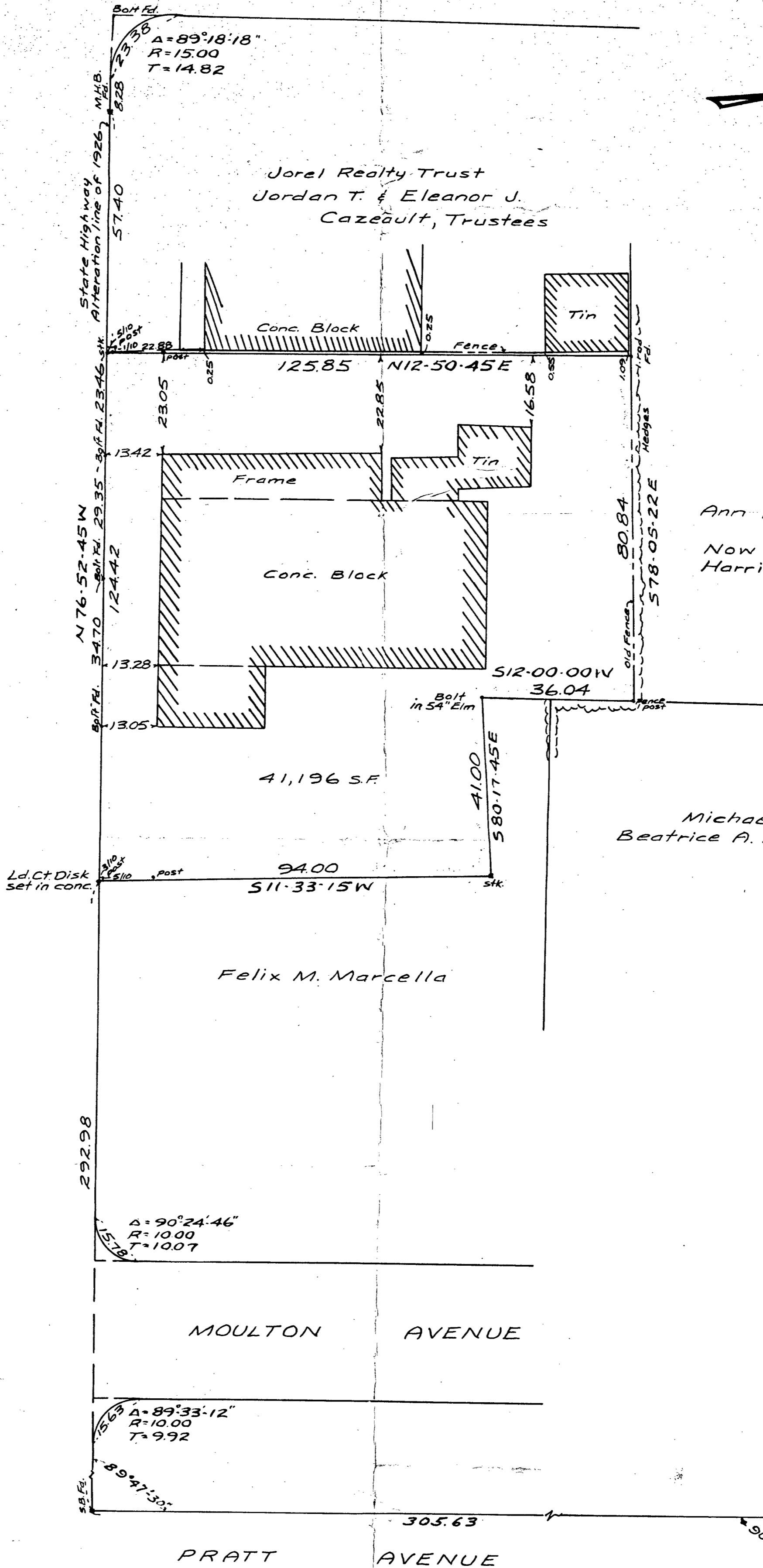


BAY VIEW STREET



STATE HIGHWAY STREET

STATE HIGHWAY (70 FT. Wide) BRIDGE



Formerly  
Ann L. & Elizabeth M.  
White  
Now Richard G. &  
Harriet L. Nickerson

Michael J. &  
Beatrice A. Mahoney

Felix M. Marcella

MOULTON AVENUE

PRATT AVENUE



I certify that this actual survey was made on the ground in accordance with Land Court instructions of 1959

May 18, 1968 Robert S. Booth, Jr. Eng.

Plan of Land in Weymouth, Mass.

Scale 20 feet to an inch

May 18, 1968

Ernest W. Branch Inc., Civil Engineers  
Adams Building, 1354 Hancock St., Quincy

Ld. Ct #23671A

5/22/68  
APPROVAL UNDER SUBDIVISION  
CONTROL LAW NOT REQUIRED  
FOR WEYMOUTH PLANNING BOARD  
Mary C. White