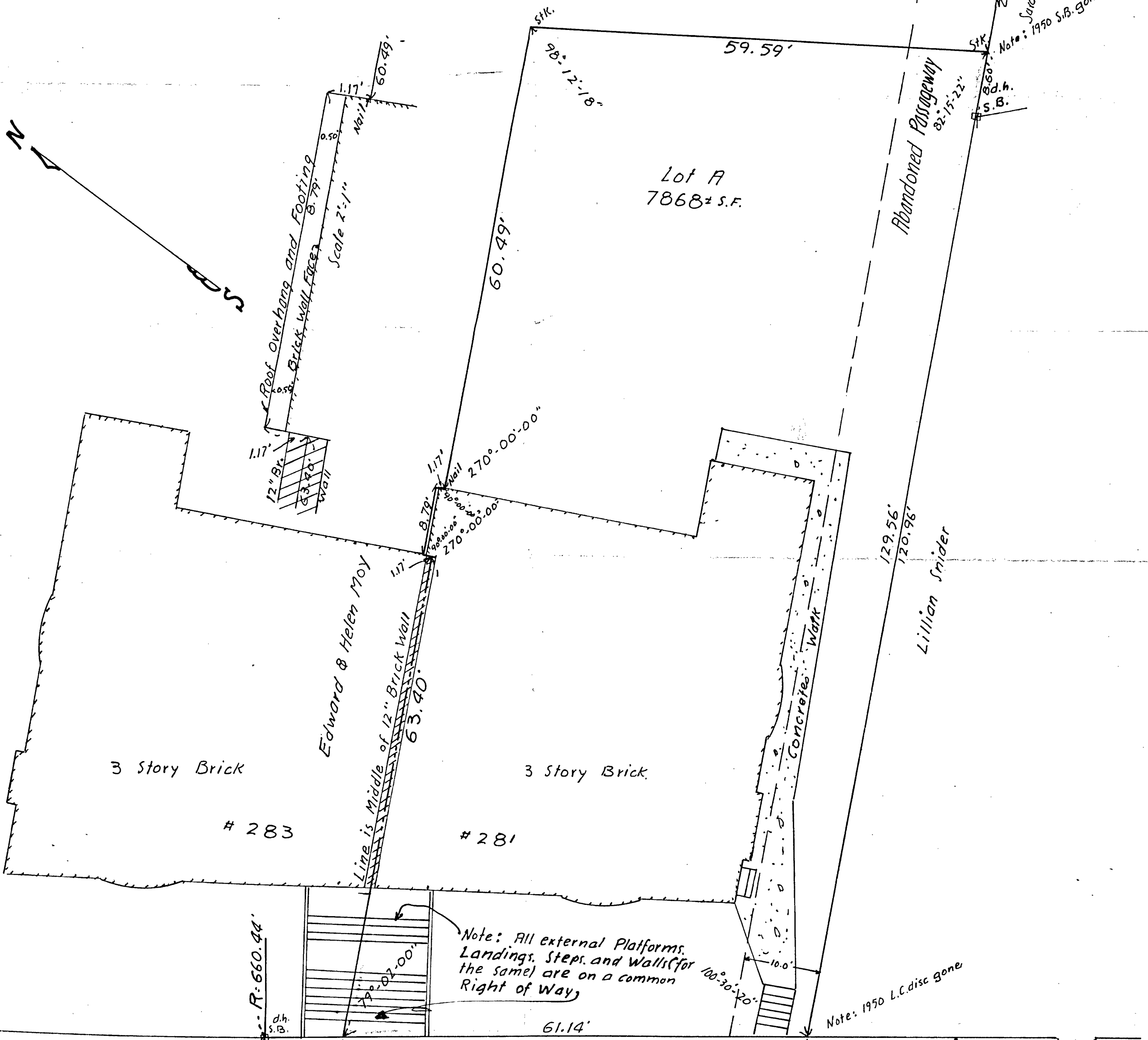
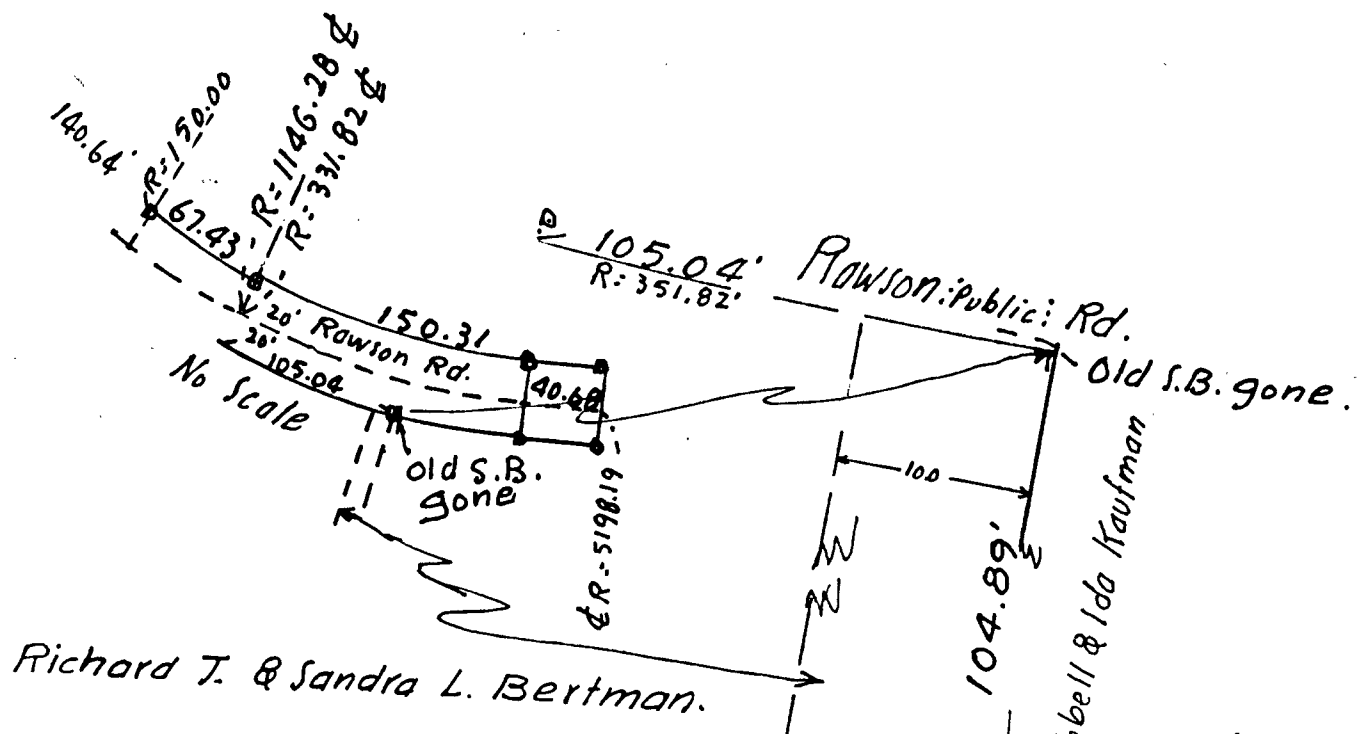


35,664

Interior Angle	Deflection Angle	Azimuth	Distance	+ Sine	- Sine	+ Cosine	- Cosine
		0	129.56			129.56	
100-30-20	79-29-40	79-29-40	61.14	60.12		11.15	
79-02-00	100-58-00	180-27-40	63.40		0.51		63.40
270-00-00	-(90-00-00)	90-27-40	1.17	1.17			0.00
90-00-00	90-00-00	180-27-40	8.79		0.07		8.79
90-00-00	90-00-00	270-27-40	1.17		1.17	0.009	
270-00-00	-(90-00-00)	180-27-40	60.49		0.49		60.49
98-12-18	81-47-42	262-15-22	59.59		59.05		8.03
82-15-22	97-44-38	360-00-00					
1080-00-00				61.29	61.29	140.72	140.72



Tappan St. (Public)

I certify that this actual Survey was made on the ground in accordance with the Land Court Instructions of 1959 during April 1968.
25 Apr. 1968, S. Albert Kaufman R.L.S.

Approval under Subdivision Control Law NOT REQUIRED Brookline Planning Board	1968

Plan of Land Situated in Brookline, Mass.
Scale of 10 ft. to an Inch; 25 Apr. 1968.
S. Albert Kaufmann, R.L.S. 6 Pleasant St. Malden.
Petitioner: Walter P. Boruchoff, Trustee



S.B. dh
P.C. at Beaconfield; Public Rd.