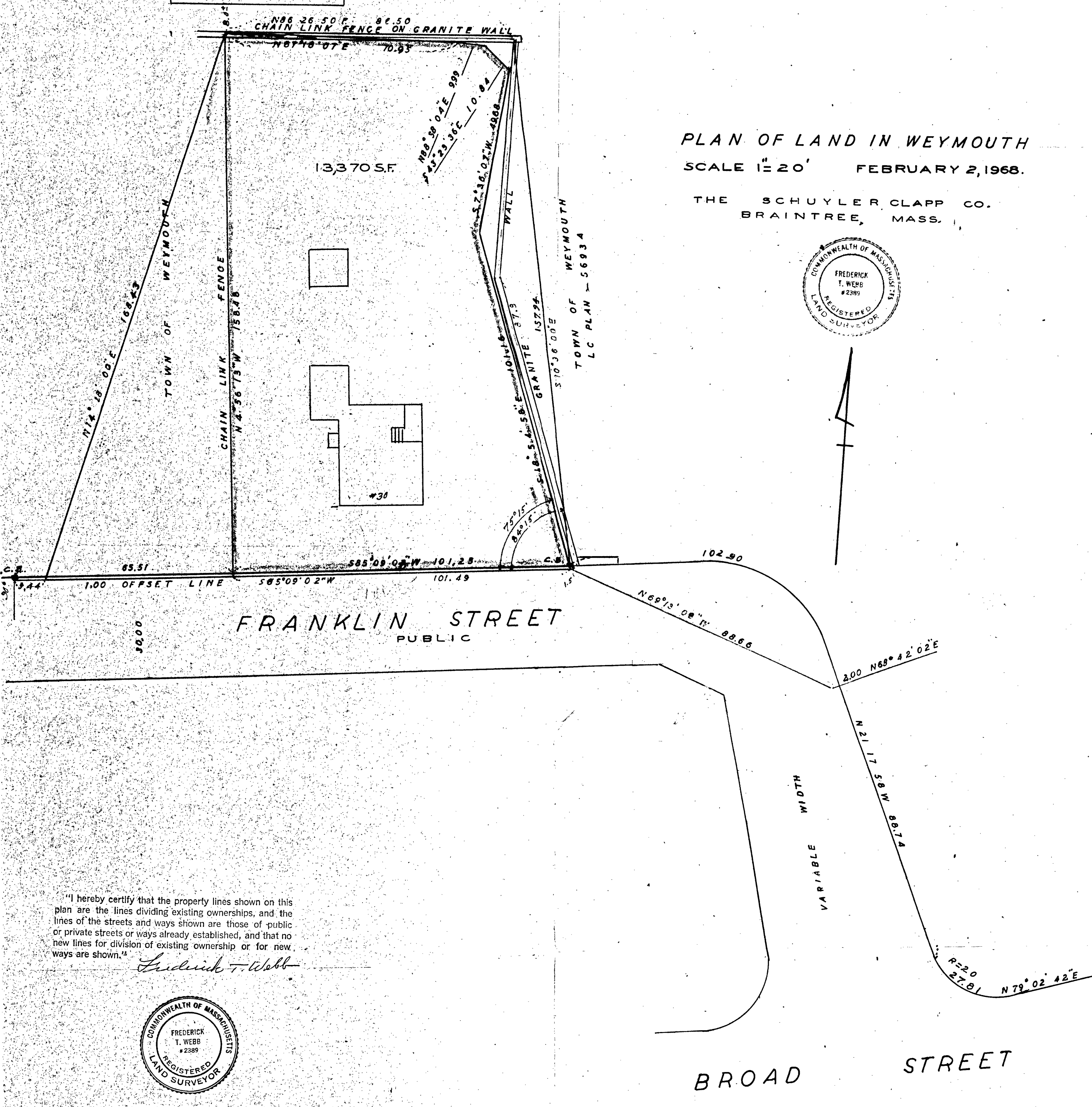
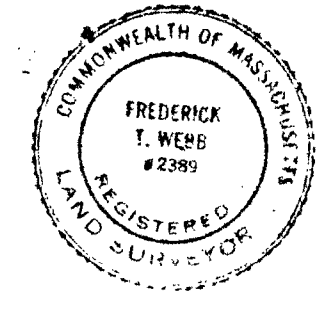


LAND COURT PLAN 5693A  
TOWN OF WEYMOUTH

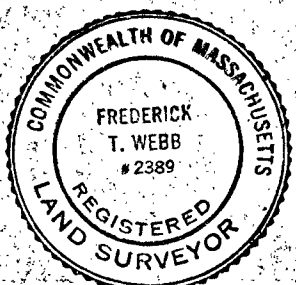
PLAN OF LAND IN WEYMOUTH  
SCALE 1"=20' FEBRUARY 2, 1968.

THE SCHUYLER CLAPP CO.  
BRAINTREE, MASS.



"I hereby certify that the property lines shown on this plan are the lines dividing existing ownerships, and the lines of the streets and ways shown are those of public or private streets or ways already established, and that no new lines for division of existing ownership or for new ways are shown."

*Frederick T. Webb*



I CERTIFY THAT THIS ACTUAL SURVEY WAS MADE ON THE GROUND IN ACCORDANCE WITH THE LAND COURT INSTRUCTIONS OF 1959, JANUARY, 1968.

*Frederick T. Webb*