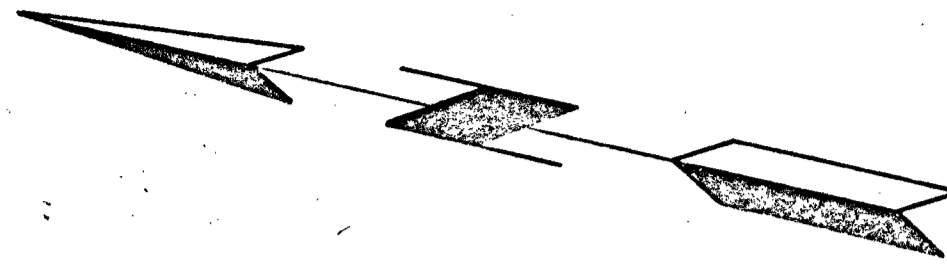


BEARING	DIST	LOCUS			
		N	S	E	W
S-13-46-40-E	78.44		76.18	18.68	
S-13-46-40-E	87.40		84.89	20.81	
S-70-50-00-W	113.30		37.20		107.02
N-14-27-20-W	122.39	118.51			30.55
N-50-16-15-E	24.00	15.65		18.19	
N-51-15-10-E	102.44	64.11		78.89	
		198.27	198.27	137.57	137.57



PLAN OF LAND
RANDOLPH, MASS.

SCALE: 1"=30' AUG. 26, 1967
CHARLES W. LEHTO
REG. LAND SURVEYOR
10 WALES AVENUE
RANDOLPH, MASS.

Approval not required under
The Sub Division Control Act
Randolph Planning Board
George F. Loeg (Chm.)
Charles W. Lehto
Sept. 11, 1967

RECEIVED

SEP 11 1967
PLANNING BOARD
RANDOLPH

I CERTIFY THAT THE CONDITIONS
ON THE GROUNDS ARE THE SAME
TODAY AS THEY WERE WHEN SURVEYED.
Charles Walter Lehto
April 14, 1968

I certify that this plan was made in accordance
with the Land Court Instructions of 1959.

Date August 25, 1967

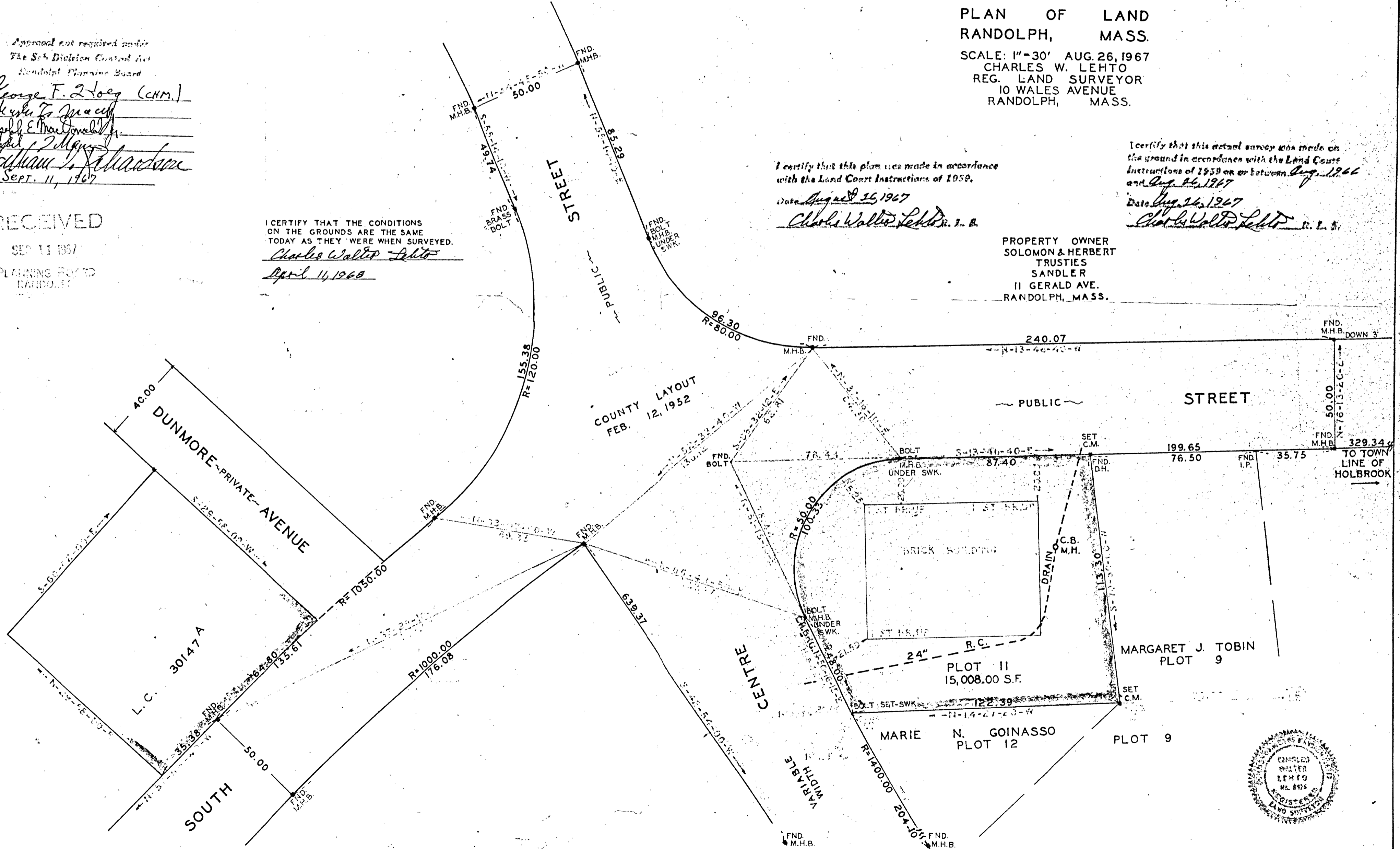
Charles Walter Lehto, L.S.

I certify that this actual survey was made on
the ground in accordance with the Land Court
Instructions of 1959 on or between Aug. 1, 1966
and Aug. 26, 1967

Date Aug. 26, 1967

Charles Walter Lehto, L.S.

PROPERTY OWNER
SOLOMON & HERBERT
TRUSTEES
SANDLER
11 GERALD AVE.
RANDOLPH, MASS.



R.C.C. up date