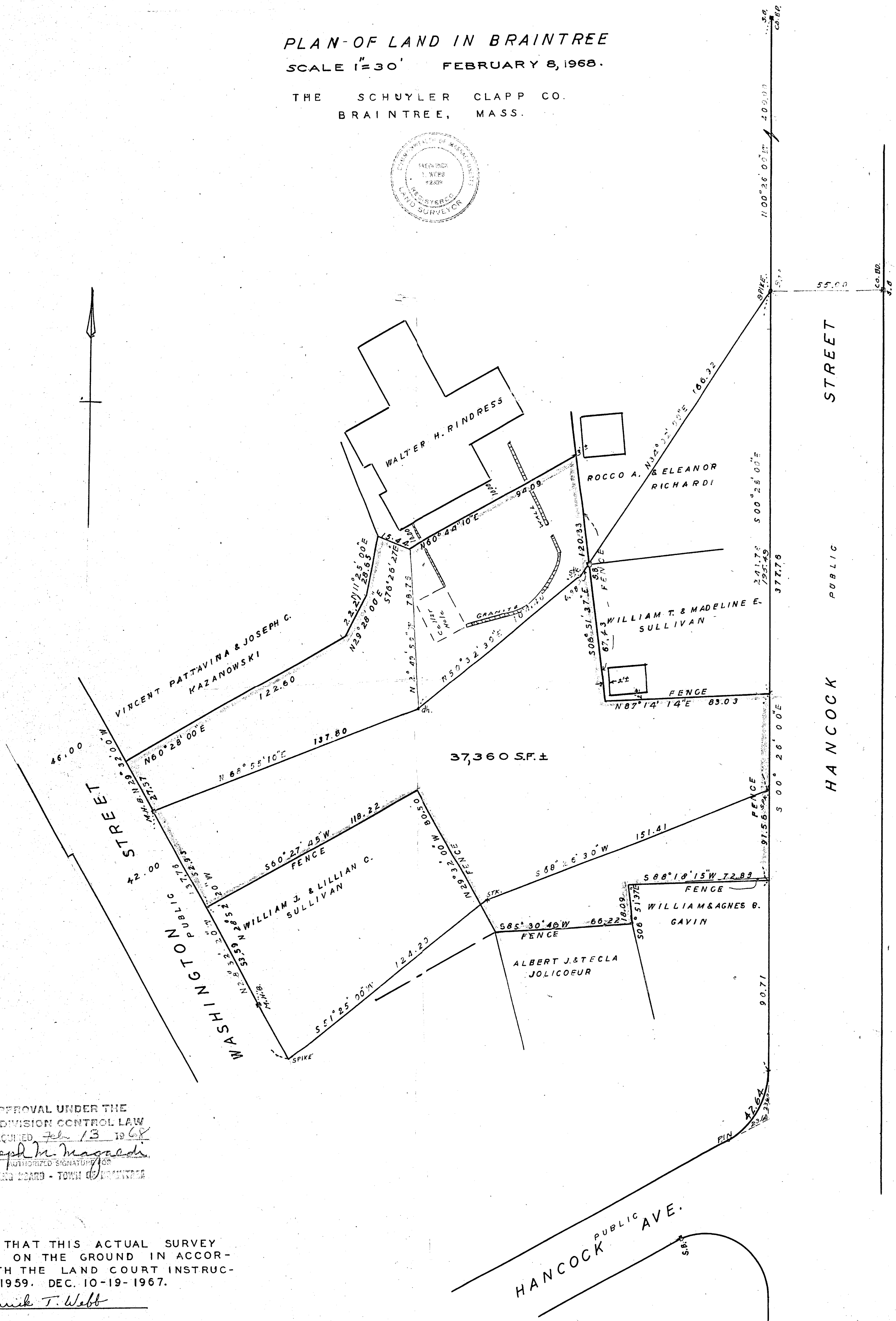
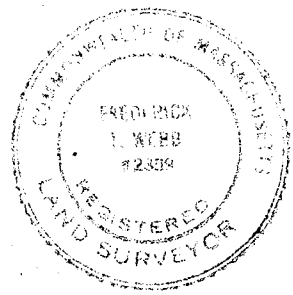


PLAN OF LAND IN BRAINTREE

SCALE 1"=30' FEBRUARY 8, 1968.

THE SCHUYLER CLAPP CO.
BRAINTREE, MASS.



APPROVAL UNDER THE
SUBDIVISION CONTROL LAW
NOT REQUIRED Feb 13 1968
Joseph M. Magaedi
AUTHORIZED SIGNATURE FOR
PLANNING BOARD - TOWN OF BRAINTREE

I CERTIFY THAT THIS ACTUAL SURVEY
WAS MADE ON THE GROUND IN ACCOR-
DANCE WITH THE LAND COURT INSTRUC-
TIONS OF 1959. DEC. 10-19-1967.

Frederick T. Webb