

PLAN OF LAND IN AVON, NORFOLK COUNTY, MASS.

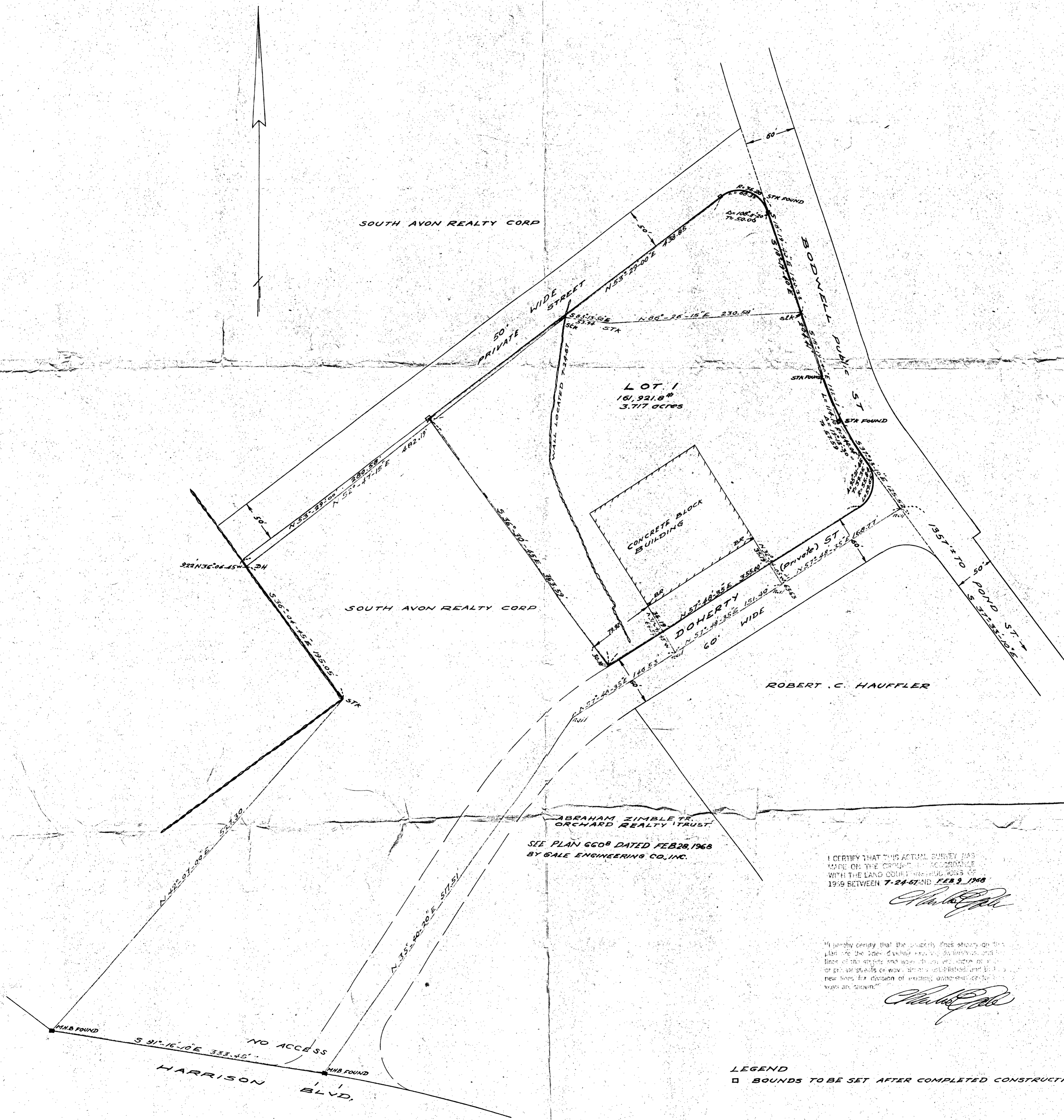
SCALE 1" = 60'

FEBRUARY 12TH 1968

GALE ENGINEERING CO., INC.
373 WASHINGTON STREET BRAintree, MASS.
REGISTERED ENGINEERS AND LAND SURVEYORS



556 of 67 to A-2



SEE PLAN 6608 DATED FEB 28, 1968
BY GALE ENGINEERING CO., INC.

I CERTIFY THAT THIS ACTUAL SURVEY WAS MADE ON THE GROUND IN ACCORDANCE WITH THE LAND SURVEYING ACTS OF 1919 BETWEEN 7-24-67 AND FEB 9, 1968

Charles E. Gale

"I hereby certify that the property lines shown on this plan are the lines of record and that the same were ascertained by actual survey on the ground and that the same are correct and true and that the same are shown on this plan for division of existing interests and that the same are shown."

Charles E. Gale

LEGEND
□ BOUNDS TO BE SET AFTER COMPLETED CONSTRUCTION