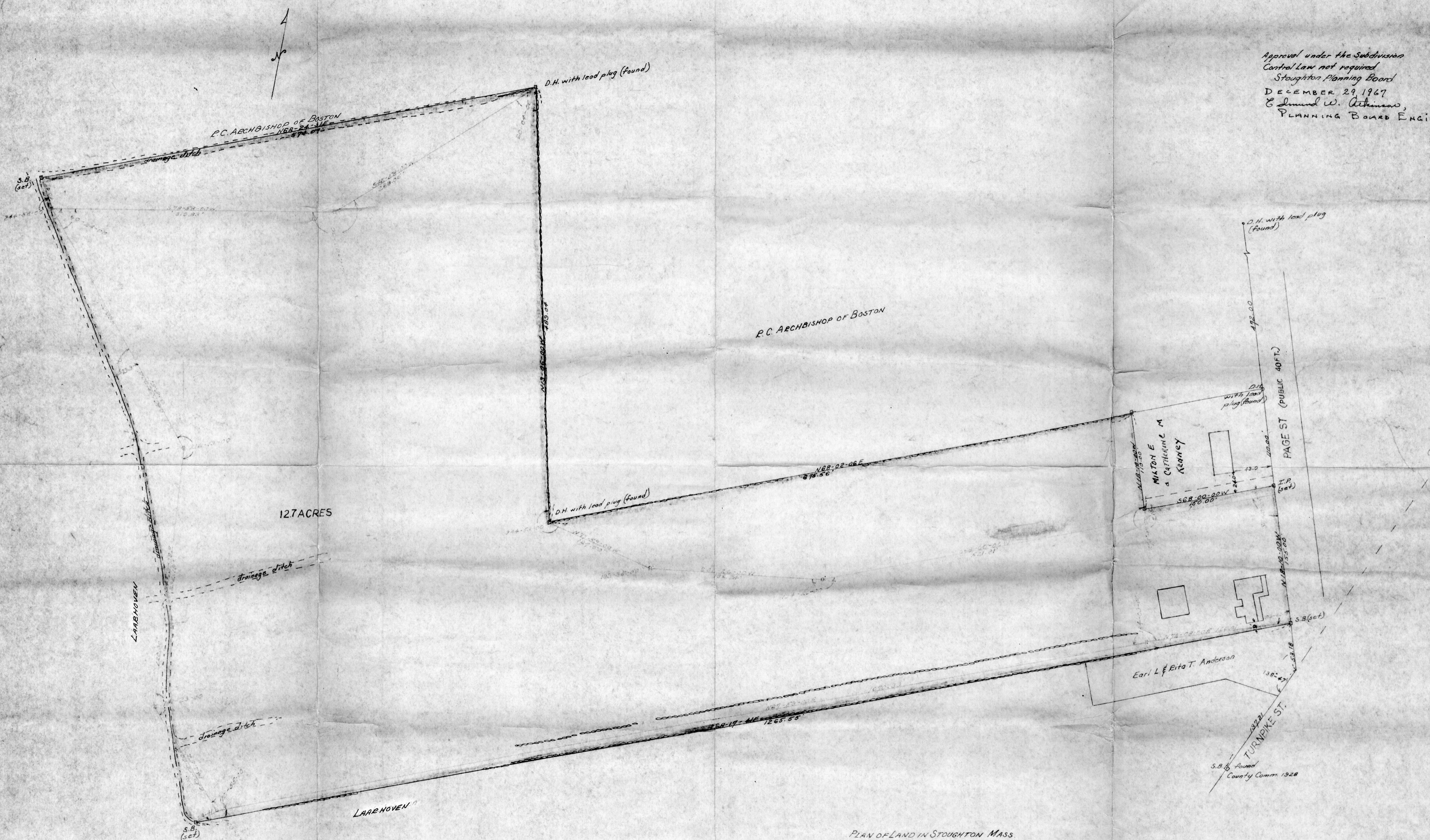


Approval under the Subdivision  
Control Law not required  
Stoughton Planning Board  
DECEMBER 29, 1967  
Edmund W. Atkinson,  
PLANNING BOARD ENGINEER



127 ACRES

P.C. ARCHBISHOP OF BOSTON

LAARHOVEN

LAARHOVEN

MILTON E.  
& CATHERINE M.  
KEENEY

Earl L. & Rita T. Anderson

PAGE ST (PUBLIC 40 FT.)

TURMPIKE ST.

PLAN OF LAND IN STOUGHTON MASS.  
Scale: 1 in = 50 FT  
James W. Barni Surveyor  
Nov. 6, 1967

I certify that this actual survey was made  
on the ground in accordance with the Land  
Court Instruction of 1963 between Oct. 1  
& Oct. 30, 1967  
James W. Barni  
17 Carlisle Rd  
Greenland, Mass

