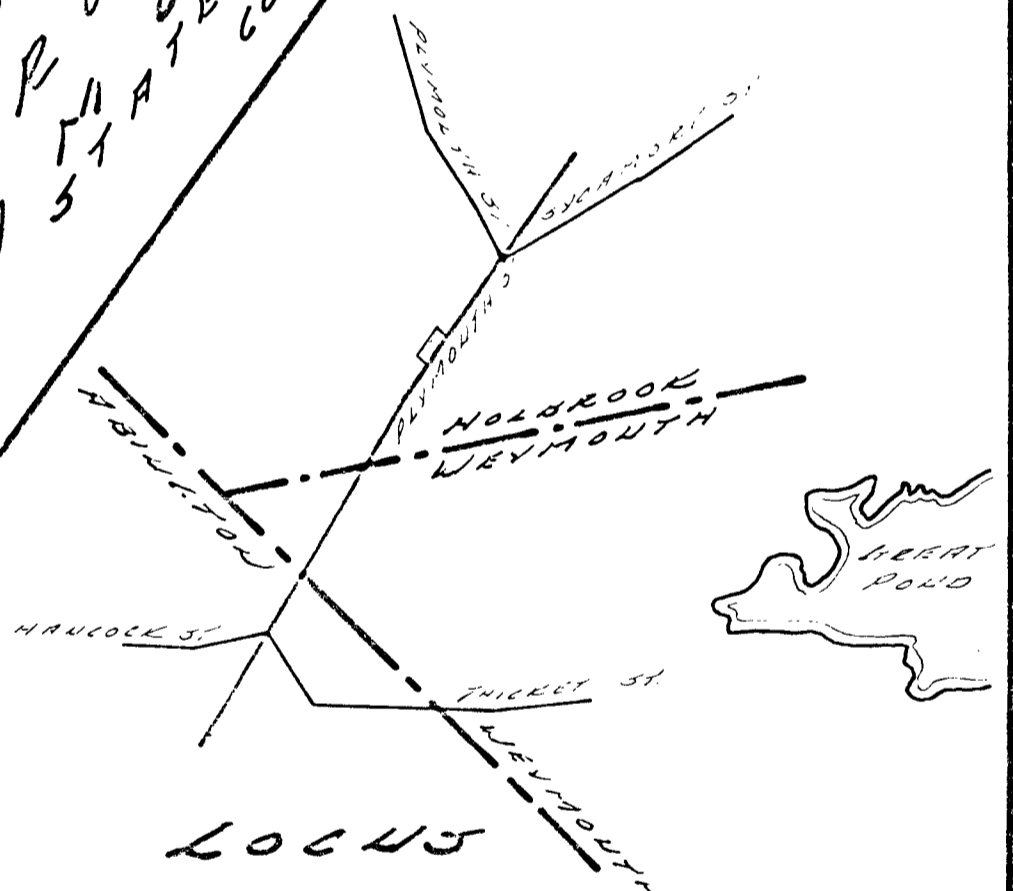
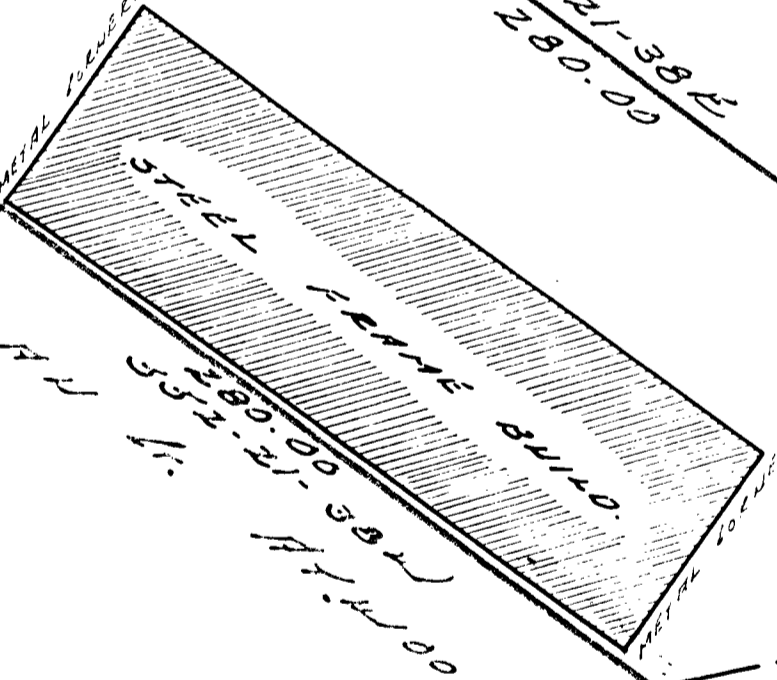
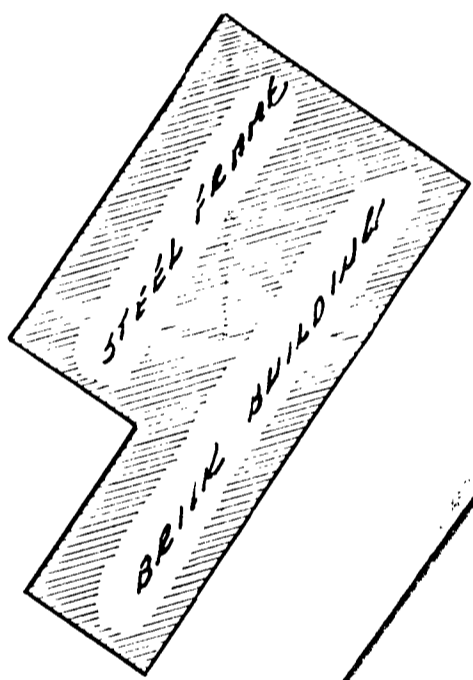
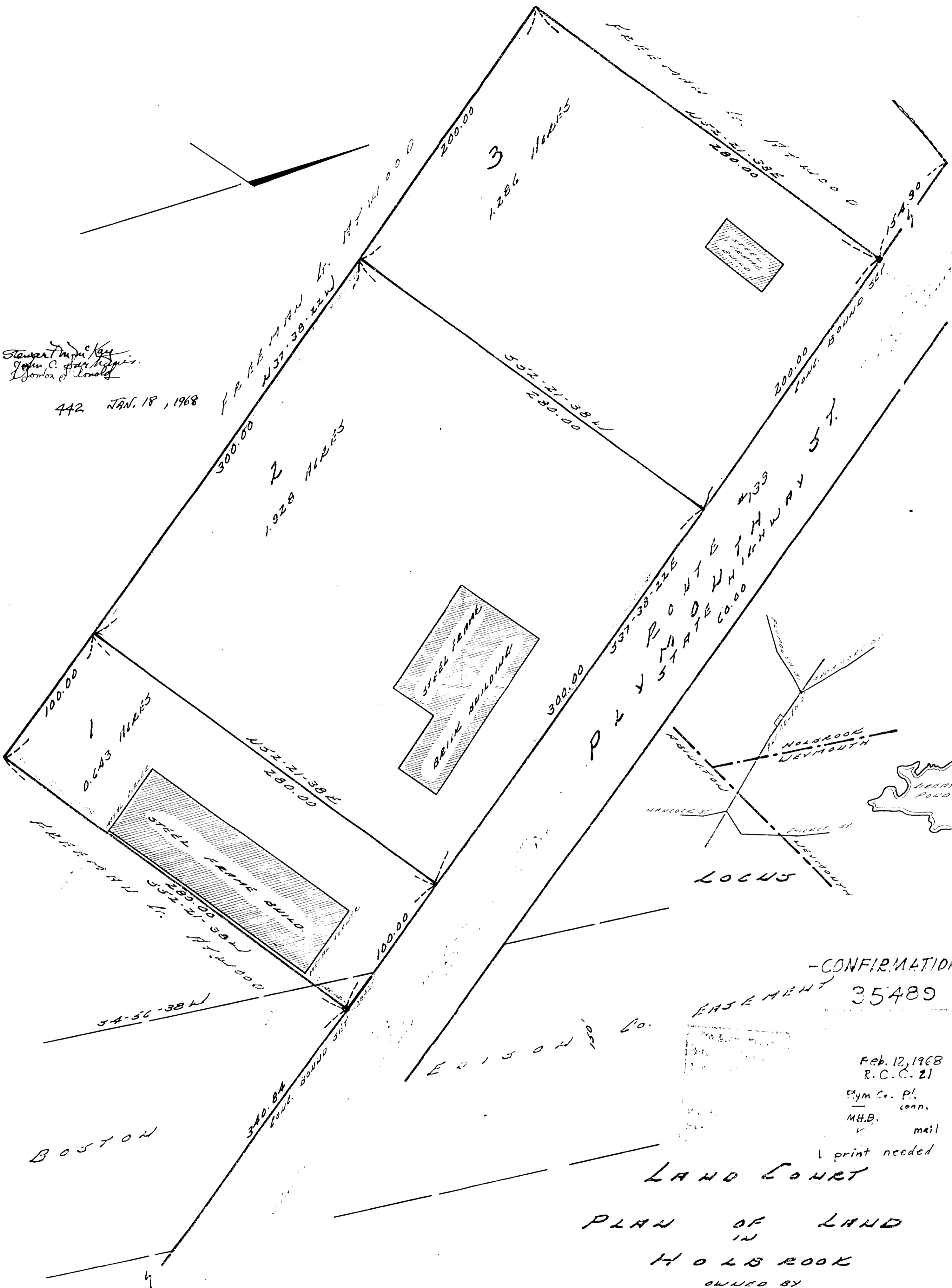


Stewart & Key
John C. Farber
Boston & Lowell

442 JAN. 18, 1968



-CONFIRMATION-
EASEMENT 35489

Feb. 12, 1968
R.C.C. 21

Pym Co. Pl. conn.
M.H.B. mail

1 print needed

LAND COURT

PLAN OF LAND
IN
HOLD BROOK

OWNED BY

JOSEPH L. & ALYCE L. BARRY

JANUARY 12, 1968

I CERTIFY THAT THIS ACTUAL SURVEY WAS MADE ON THE GROUND IN ACCORDANCE WITH THE LAND COURT INSTRUCTIONS OF 1959 ON JAN. 3, 1968

SCALE: 1" = 40'

NHYWARD-HAYWARD & BOUNTON
68 MAIN ST. BROOKTON

M.H.B.