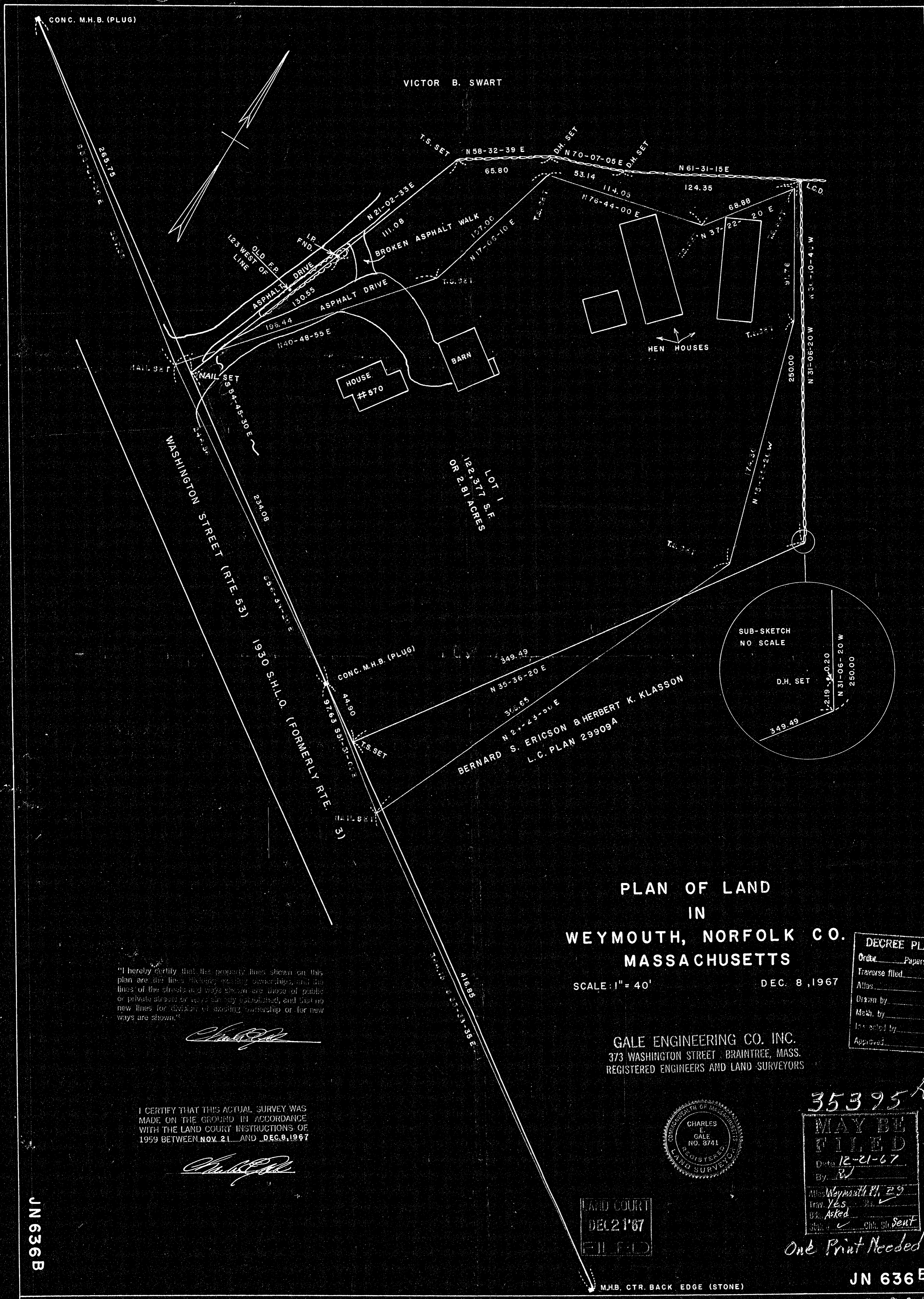


35395A



"I hereby certify that the property lines shown on this plan are the lines of the existing ownership, and the lines of the streets and ways shown are those of public or private streets or ways already established, and that no new lines for division of existing ownership or for new ways are shown."

Charles E. Gale

I CERTIFY THAT THIS ACTUAL SURVEY WAS MADE ON THE GROUND IN ACCORDANCE WITH THE LAND COURT INSTRUCTIONS OF 1959 BETWEEN NOV. 21 AND DEC. 9, 1967

Charles E. Gale

**PLAN OF LAND
IN
WEYMOUTH, NORFOLK CO.
MASSACHUSETTS**

SCALE: 1" = 40' DEC. 8, 1967

GALE ENGINEERING CO. INC.
373 WASHINGTON STREET BRAINTREE, MASS.
REGISTERED ENGINEERS AND LAND SURVEYORS

DECREE PLAN	
Order	Papers
Traverse filed	
Atlas	
Drawn by	
Made by	
Indexed by	
Approved	



LAND COURT
DEC 21 1967
FILED

35395A
MAY BE FILED
Date 12-21-67
By [Signature]
Weymouth Pl. 29
Trav. Yes
Bk. Asked
Chk. Sent

One Print Needed

JN 636B

35395A

JN 636B

M.H.B. CTR. BACK EDGE (STONE)