

Laura L. James and Mabel J. Bazin  
 N.46-28-35E. 437.92  
 N.51-02-25E. 418.62

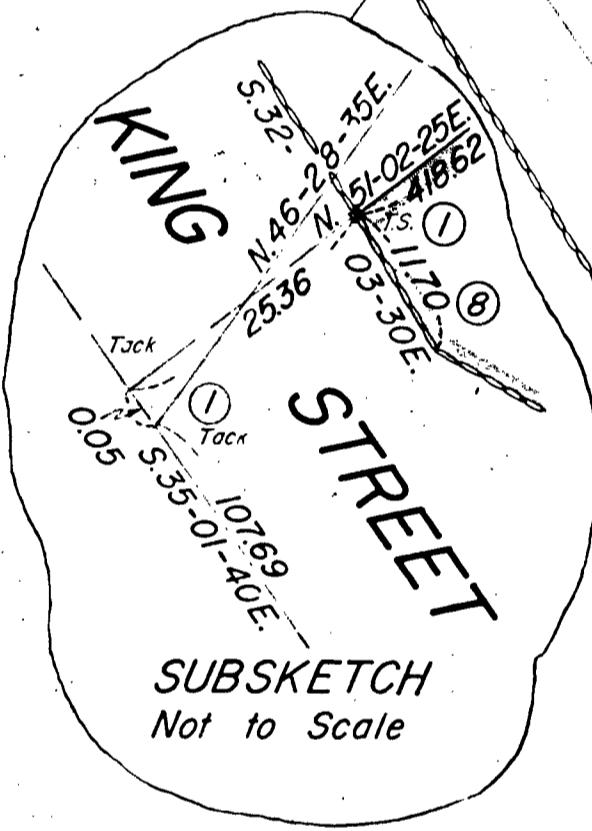
Gertrude T. Bates  
 and  
 Nathan W. Bates

56759 Sq. Ft.

Gertrude T. Bates and Nathan W. Bates  
 N.50-07-20E. 410.00  
 N.51-02-25E. 446.11

KING STREET

STREET



APPROVAL UNDER THE SUBDIVISION CONTROL LAW NOT REQUIRED.

COHASSET PLANNING BOARD

December 6, 1967  
 [Signature]  
 [Signature]  
 [Signature]  
 N. W. Bates

**PLAN OF LAND  
 IN  
 COHASSET, MASS.**

Scale: 40 feet to an inch. October 17, 1967.  
 Lewis W. Perkins & Son, Engrs, Hingham, Mass.

I certify that this actual survey was made on the ground in accordance with the Land Court Instructions of 1959 between September 12, 1960 and October 13, 1967.

October 17, 1967. [Signature]  
 Registered Land Surveyor

