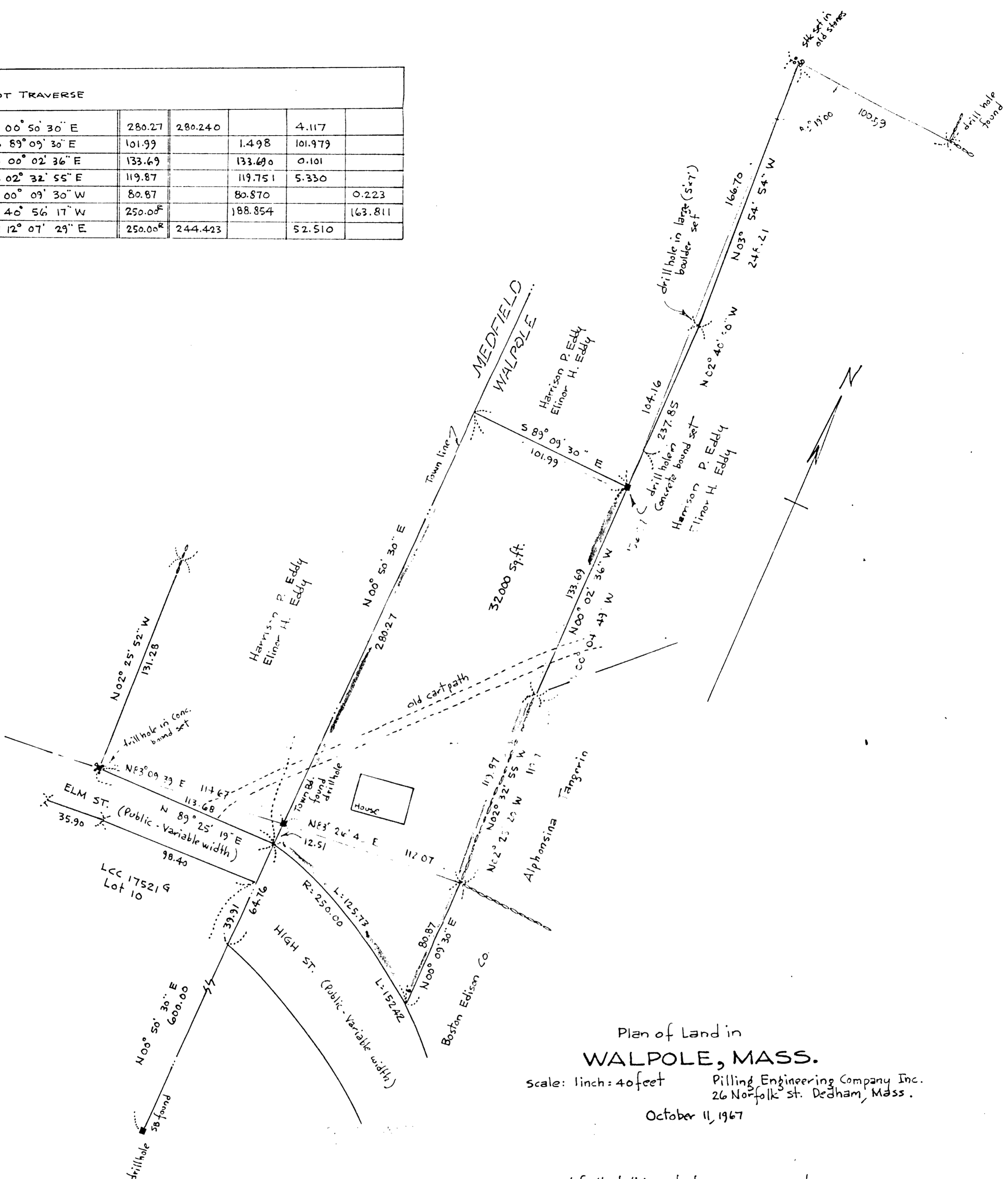


W09898

| LOT TRAVERSE    |                     |         |         |         |
|-----------------|---------------------|---------|---------|---------|
| N 00° 50' 30" E | 280.27              | 280.240 |         | 4.117   |
| S 89° 09' 30" E | 101.99              |         | 1.498   | 101.979 |
| S 00° 02' 36" E | 133.69              |         | 133.690 | 0.101   |
| S 02° 32' 55" E | 119.87              |         | 119.751 | 5.330   |
| S 00° 09' 30" W | 80.87               |         | 80.870  | 0.223   |
| S 40° 56' 17" W | 250.00 <sup>F</sup> |         | 188.854 | 163.811 |
| N 12° 07' 29" E | 250.00 <sup>R</sup> | 244.423 |         | 52.510  |



Plan of Land in  
**WALPOLE, MASS.**

Scale: 1 inch = 40 feet  
Pilling Engineering Company Inc.  
26 Norfolk St. Dedham, Mass.  
October 11, 1967

I certify that this actual survey was made on the ground in accordance with the Land Court Instructions of 1959 between July 13, 1966 and Oct 29, 1966 (verified Oct 11, 1967)

Approval under Subdivision Control Law not required Date: Oct 11, 1967

Anthony W. ...  
John J. ...  
Robert A. ...

WALPOLE PLANNING BOARD

DEED RECORD  
35360

Howard L. Millard  
Registered Land Surveyor

95389A