

Plan of Land in
DEDHAM, MASS.

Scale: 1 inch = 40 feet

Pilling Engineering Company Inc.
26 Norfolk St. Dedham, Mass.

August 4, 1967

I here by certify that the property lines shown on this plan are the lines dividing existing ownerships, and the lines of the streets and ways shown are those of public or private streets or ways already established, and that no new lines for division of existing ownership or for new ways are shown.

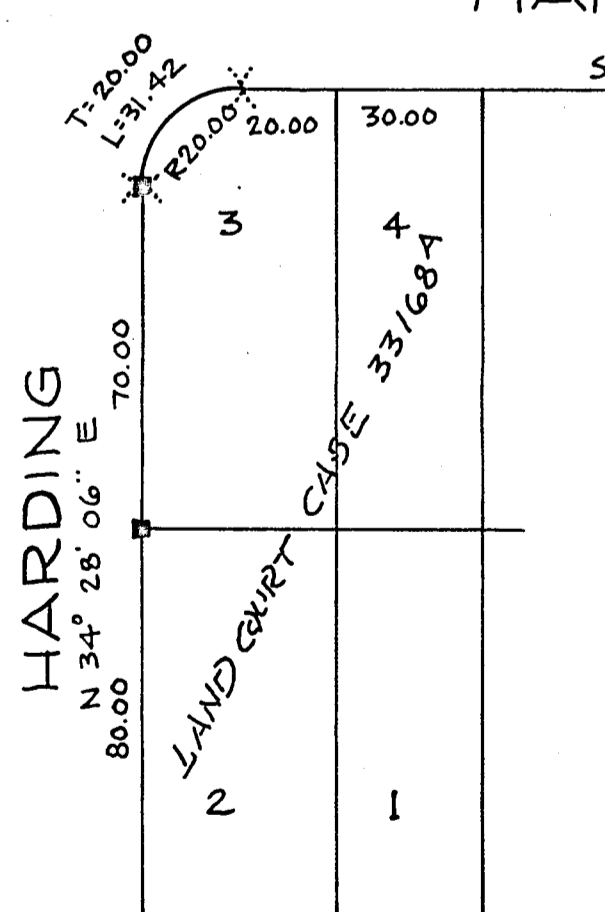
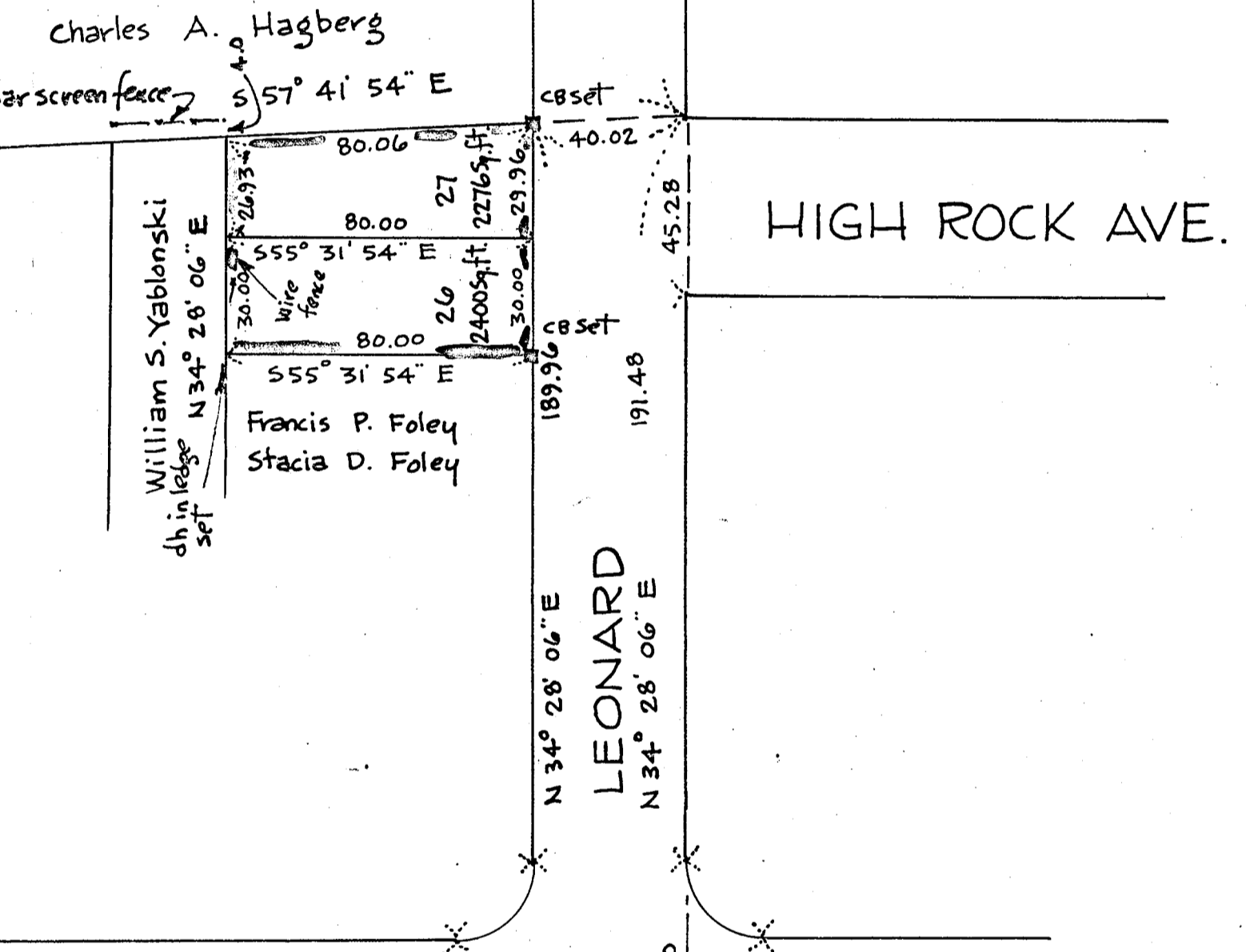
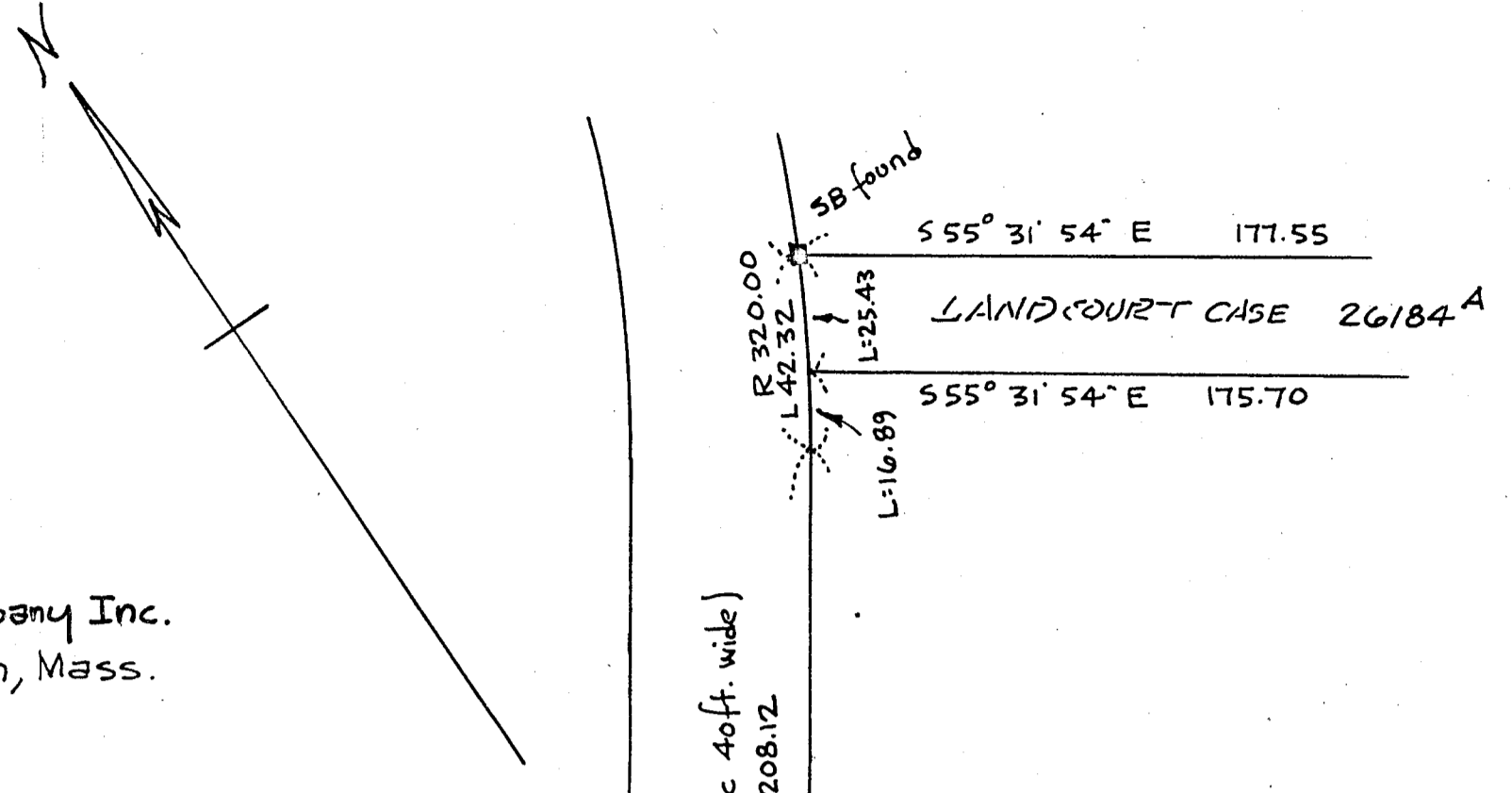


Howard L. Millard
Registered Land Surveyor
August 4, 1967

I certify that this actual survey was made on the ground in accordance with the Land Court Instructions of 1959 on August 3 & 4, 1967

Aug 4, 1967

Howard L. Millard
Registered Land Surveyor



Lot Traverse				
S57°41'54" E	80.06		42.78	67.67
S34°28'06" W	59.96		49.43	33.96
N55°31'54" W	80.00	45.27		65.96
N34°28'06" E	56.93	46.94		32.22