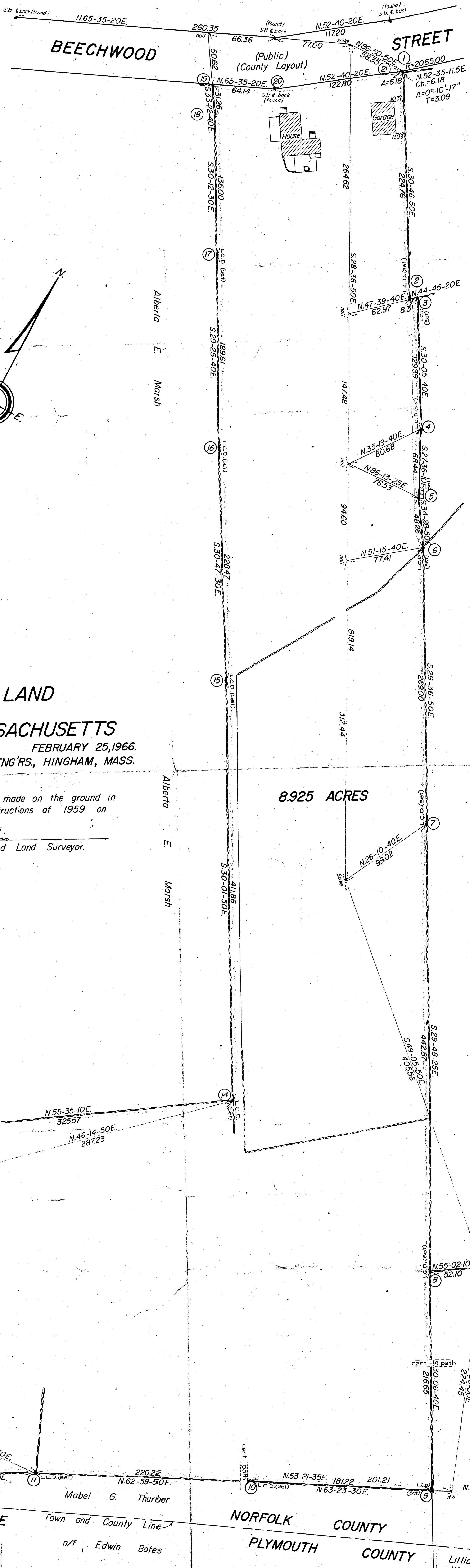
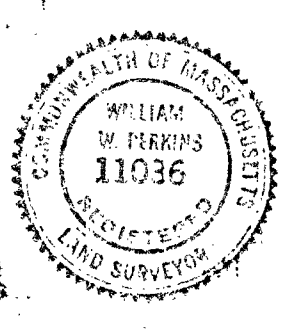


**PLAN OF LAND
IN
COHASSET, MASSACHUSETTS**
SCALE: 40 FEET TO AN INCH. FEBRUARY 25, 1966.
LEWIS W. PERKINS & SON, ENG'RS, HINGHAM, MASS.

I certify that this actual survey was made on the ground in accordance with the Land Court Instructions of 1959 on February 2, 1966.
February 25, 1966. *William W. Perkins*
Registered Land Surveyor.



8.925 ACRES

Lawrence F. and E. Lillian Lincoln

Maria Rodrigues

Mabel G. Thurber
Town and County Line
n/f Edwin Bates

Everett W. and Walter C. Wheelwright

Everett W. and Walter C. Wheelwright

Lillian M., Everett W. and Walter C. Wheelwright