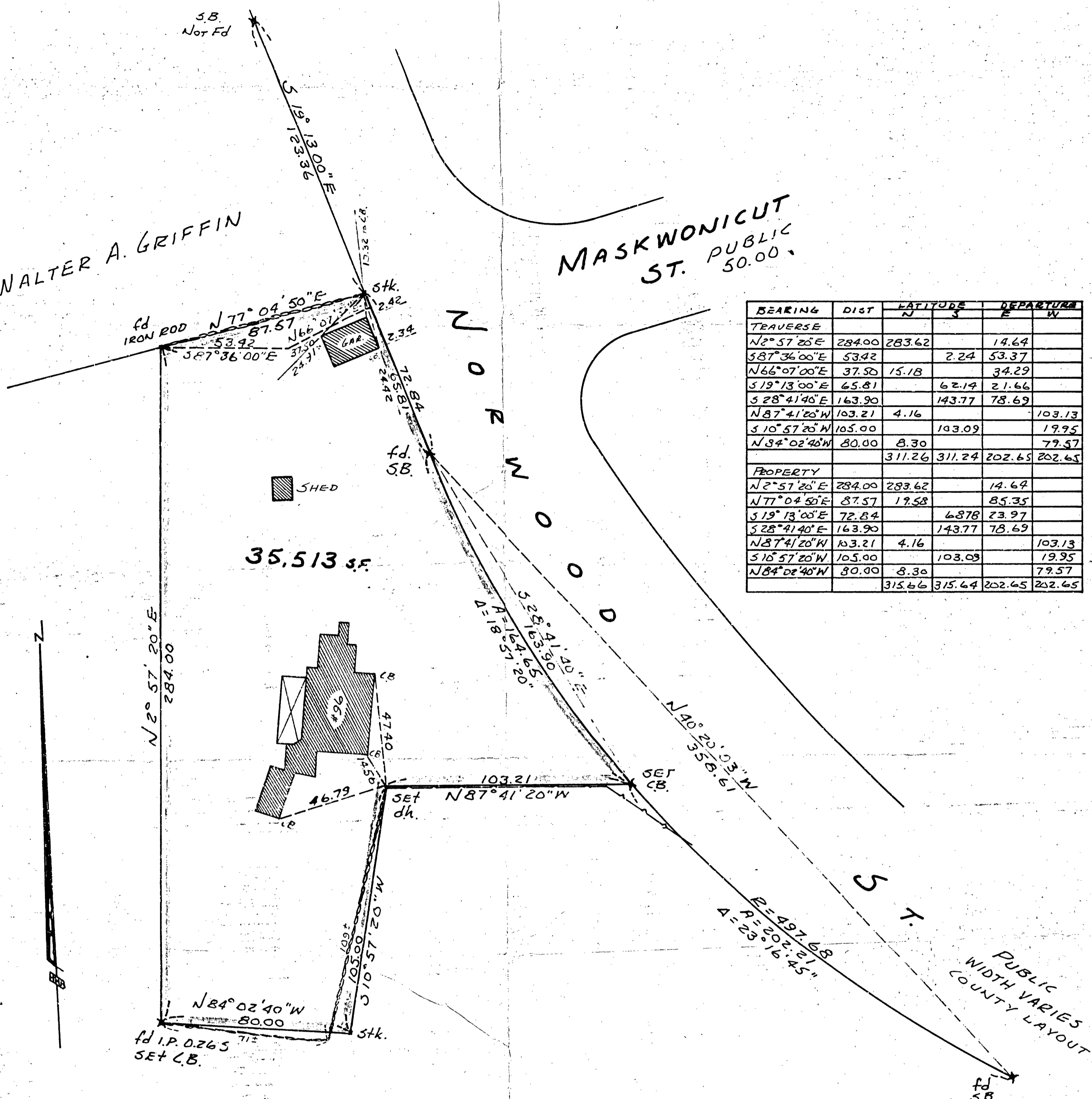


WALTER A. GRIFFIN

MASKWONICUT ST. PUBLIC 50.00'

BEARING	DIST	LATITUDE		DEPARTURE	
		N	S	E	W
TRAVERSE					
N2°57'20"E	284.00	283.62		14.64	
S87°36'00"E	53.42		2.24	53.37	
N66°07'00"E	37.50	15.18		34.29	
S19°13'00"E	65.81		62.14	21.66	
S28°41'40"E	163.90		143.77	78.69	
N87°41'20"W	103.21	4.16			103.13
S10°57'20"W	105.00		103.09		19.95
N84°02'40"W	80.00	8.30			79.57
		311.26	311.24	202.65	202.65
PROPERTY					
N2°57'20"E	284.00	283.62		14.64	
N77°04'50"E	87.57	19.58		85.35	
S19°13'00"E	72.84		68.78	23.97	
S28°41'40"E	163.90		143.77	78.69	
N87°41'20"W	103.21	4.16			103.13
S10°57'20"W	105.00		103.09		19.95
N84°02'40"W	80.00	8.30			79.57
		315.66	315.64	202.65	202.65

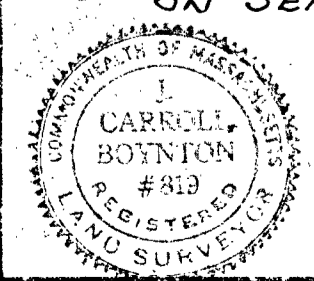


WALTER A. GRIFFIN ET UX.

LAND COURT
 PLAN OF LAND IN SHARON
 OWNED BY
 ROBERT F. CARROLL & ARTHUR F. SWEENEY
 SCALE 1"=30' SEP. 15, 1967
 HAYWARD - HAYWARD & BOYNTON
 68 MAIN ST. BROCKTON

WE CERTIFY THAT THIS ACTUAL SURVEY WAS MADE ON THE GROUND IN ACCORDANCE WITH LAND COURT INSTRUCTIONS OF 1959 ON SEPTEMBER 14-16, 1967.

I certify that the property lines shown are the lines dividing existing ownerships, and the lines of streets and ways shown are those of public or private streets or ways already established, and that no new lines for division of existing ownership or for new ways are shown.



Robert F. Carroll
 REGISTERED LAND SURVEYOR.
 9/15/67

Robert F. Carroll
 Registered Land Surveyor