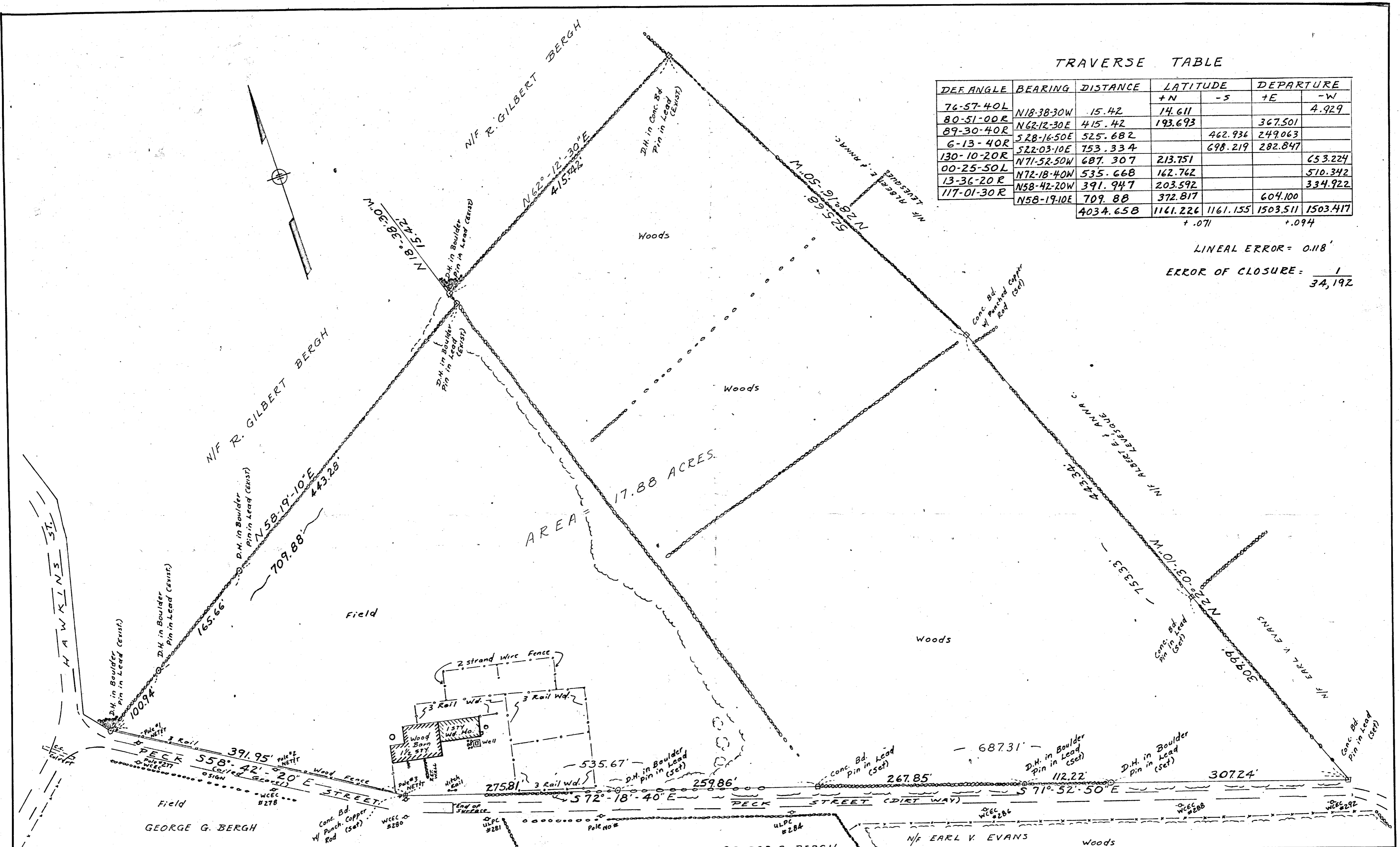


TRAVERSE TABLE

DEF ANGLE	BEARING	DISTANCE	LATITUDE		DEPARTURE	
			+N	-S	+E	-W
76-57-40L	N18-38-30W	15.42	14.611			4.929
80-51-00R	N62-12-30E	415.42	193.693		367.501	
89-30-40R	S28-16-50E	525.682		462.936	249.063	
6-13-40R	S22-03-10E	753.334		698.219	282.847	
130-10-20R	N71-52-50W	687.307	213.751			653.224
00-25-50L	N72-18-40W	535.668	162.762			510.342
13-36-20R	N58-42-20W	391.947	203.592			334.922
117-01-30R	N58-19-10E	709.88	372.817		604.100	
		4034.658	1161.226	1161.155	1503.511	1503.417
			+ .071			+ .094

LINEAL ERROR = 0.118'
 ERROR OF CLOSURE = $\frac{1}{34,192}$



APPROVAL UNDER SUBDIVISION CONTROL LAW NOT REQUIRED.

PLAINVILLE PLANNING BOARD:
 DATE May 15, 1967
 CHAIRMAN John E. Loria
Walter E. Hastings
William B. Gell
Normand A. Therault



I certify that this actual Survey was made on the ground in accordance with the Land Court Instructions of 1959 between December 16, 1966 and April 29, 1967.

Date May 15, 1967
Cornelius J. Kelly
 20 BASSETT STREET
 TAUNTON, MASS.

PLAN OF LAND
 IN
 PLAINVILLE MASS.
 OWNED BY
 GEORGE G. BERGH
 SCALE 1 INCH = 80 FEET
 MAY 1967
 SURVEYED BY: C.J. KELLY & R.H. JOHNSON
 CIVIL ENGINEERS - TAUNTON, MASS.

BY R.H.J. 5/6/67