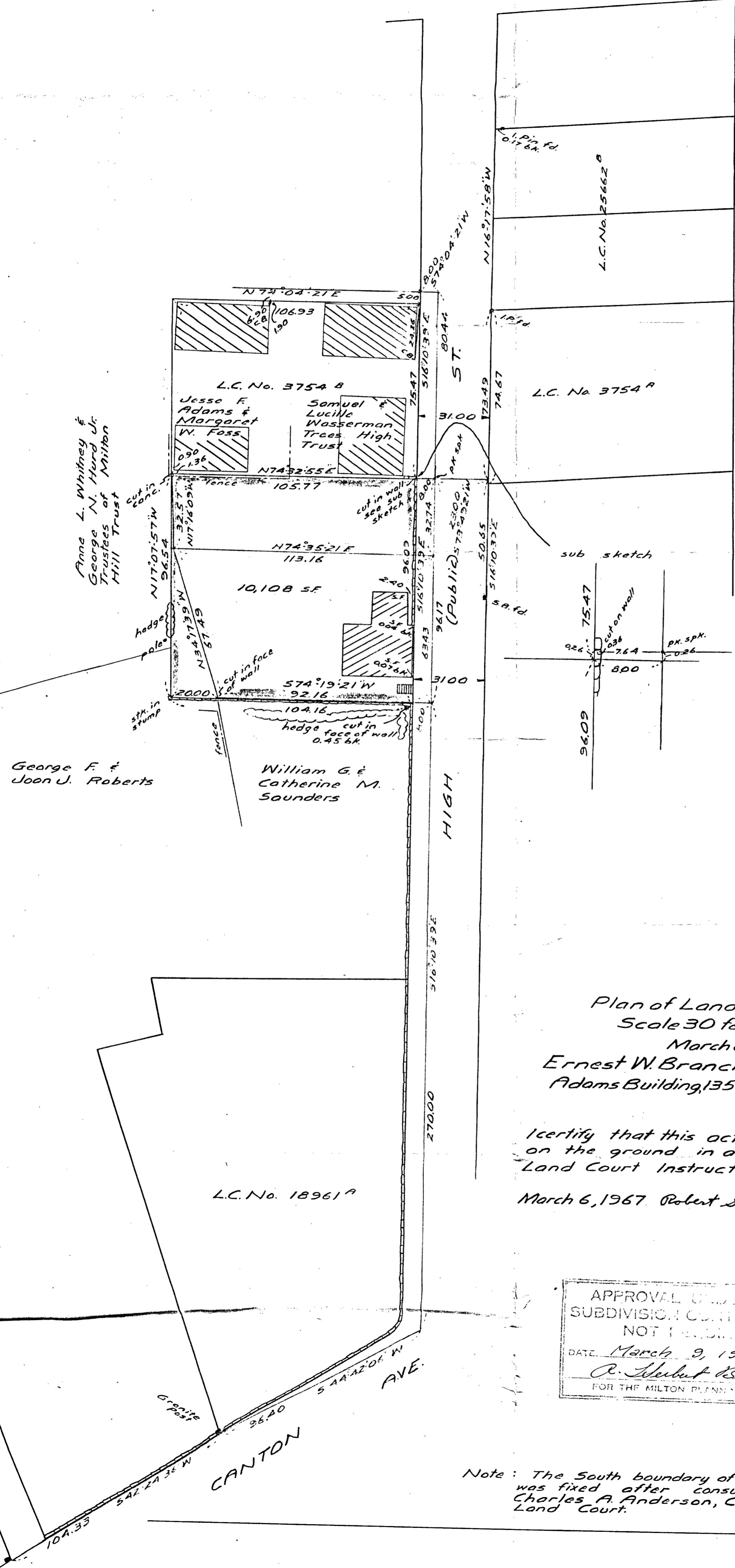


ELIOT ST.

ST.

ADAMS

N



Plan of Land in Milton, Mass.
 Scale 30 feet to an inch
 March 6, 1967
 Ernest W. Branch Inc, Civil Engineers
 Adams Building, 1354 Hancock St., Quincy

I certify that this actual survey was made
 on the ground in accordance with the
 Land Court Instructions of 1959.

March 6, 1967 Robert S. Booth, Jr. Engineer

APPROVAL UNDER THE
 SUBDIVISION CONTROL LAW
 NOT RECORDED
 DATE March 9, 1967
 R. Herbert Bruce
 FOR THE MILTON PLANNING BOARD

Note: The South boundary of L.C. No. 3754 B
 was fixed after consultation with
 Charles A. Anderson, Chief Engineer,
 Land Court.

