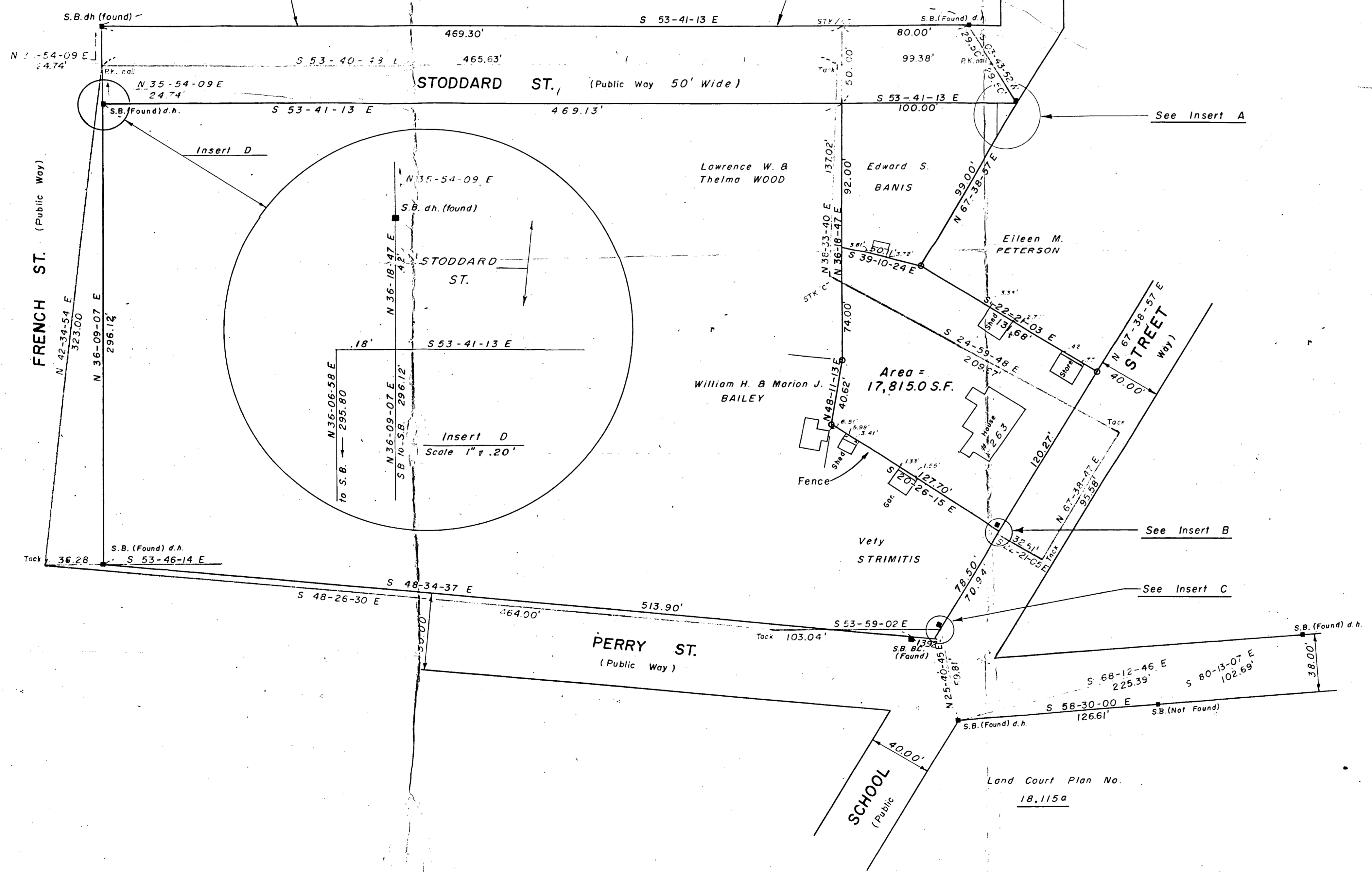


See Charles Capen Plan Dated Sept. 22, 1885 Book 13 Page 556
549.30'



50.11
131.62
181.79

I CERTIFY THAT THIS ACTUAL SURVEY WAS MADE ON THE GROUND IN ACCORDANCE WITH THE LAND COURT INSTRUCTIONS OF 1959 BETWEEN DEC. 8, 1966 AND DEC. 16, 1966.
DATE: Dec 21, 1966
SURVEYOR: George B. Austin

PLANNING BOARD APPROVAL UNDER SUBDIVISION CONTROL LAW NOT REQUIRED.
DATE: Jan 12, 1967
SIGNED: William A. McNamee Clerk

NOTE
0 = Concrete Bounds to be set.

PLAN OF LAND IN STOUGHTON
Property of
LUCIA F. DINOLO
Scale 1" equals 40'
AUSTIN ENGINEERING CO.
STOUGHTON, MASS.
DEC. 1966

Land Court Plan No.
18,115a