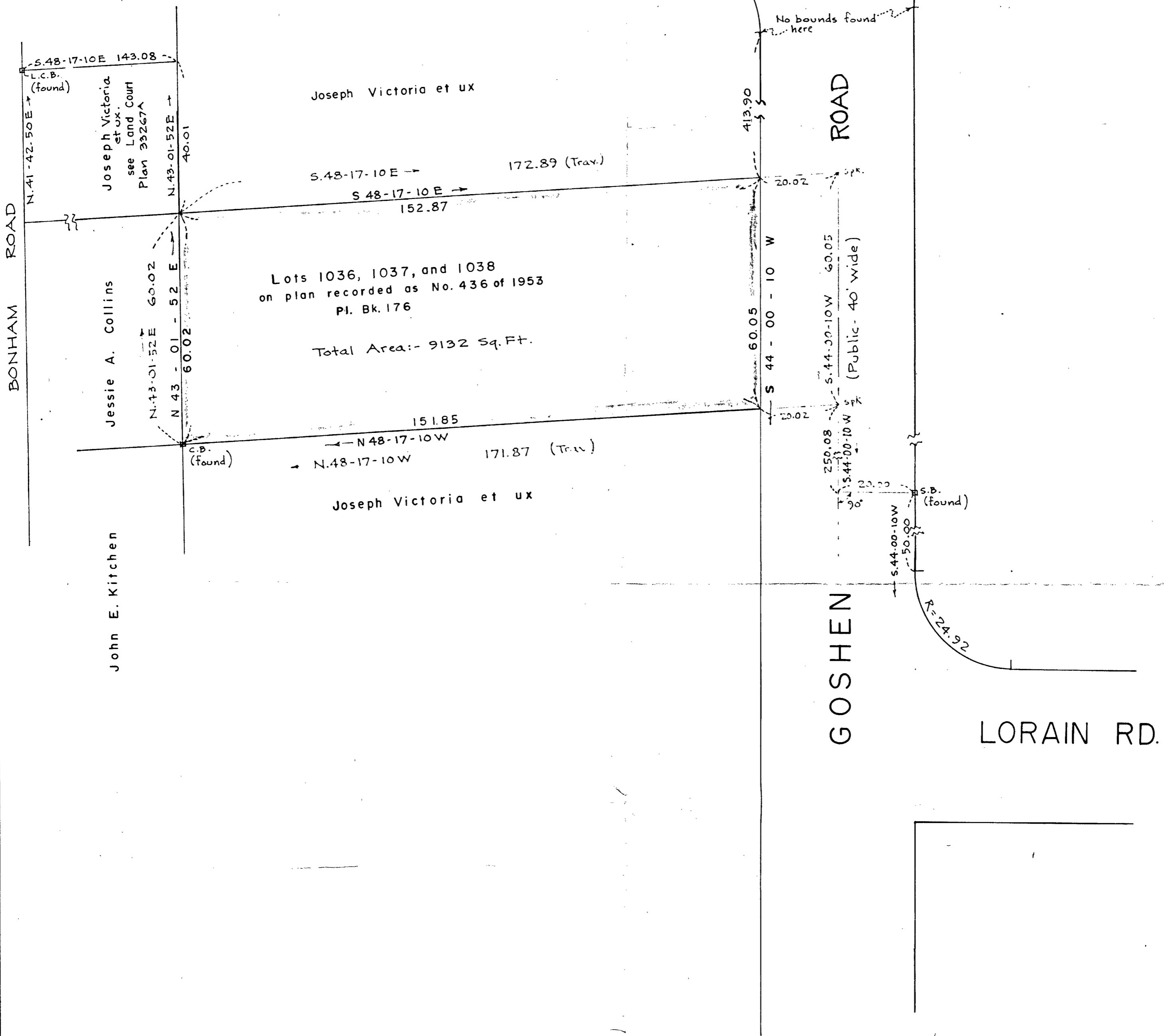


TRENTON
(Public - 40' wide)

ROAD



Approval under Subdivision
Control Law not required:-

Planning Board - Town of Dedham

PLAN OF LAND
IN
DEDHAM, MASS.

SCALE: 1" = 20'
MARCH 16, 1967
NORWOOD ENGINEERING CO. INC.
CIVIL ENGINEERS
NORWOOD, MASS.



I certify that this actual survey was made on the ground
in accordance with the Land Court Instructions of 1959 on
Feb. 28, 1967

Mar. 17, 1967

Louis J. Stefania

1420 Boston - Providence Pike, Norwood, Mass.