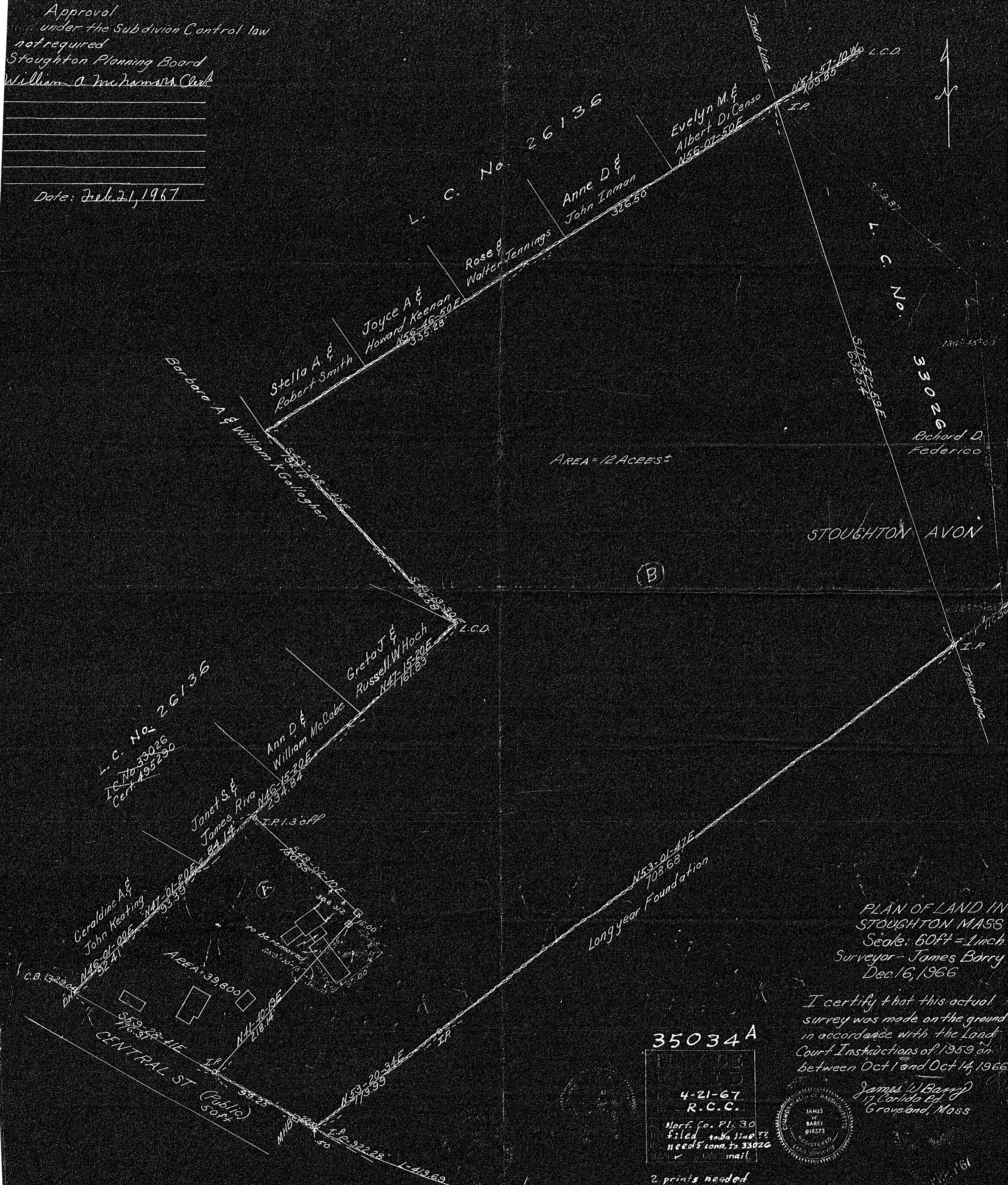


Approval  
under the Subdivision Control law  
not required  
Stoughton Planning Board  
William A. McNamee Clerk

Date: Feb. 21, 1967



AREA = 12 ACRES ±

STOUGHTON AVON

PLAN OF LAND IN  
STOUGHTON MASS  
Scale: 60ft = 1 inch  
Surveyor - James Barry  
Dec. 16, 1966

I certify that this actual  
survey was made on the ground  
in accordance with the Land  
Court Instructions of 1959 on  
between Oct 1 and Oct 14, 1966

James W. Barry  
17 Corliss Rd.  
Groveland, Mass

35034A

4-21-67  
R.C.C.  
Norf. Co. Pl. 30  
filed to be line??  
needs conn. to 33026  
mail!



2 prints needed