

PLAN OF LAND IN  
WEYMOUTH  
NORFOLK COUNTY MASS.  
SCALE: 1"=40' MAY 26, 1966

PAUL J. KNIGHT  
REGISTERED LAND SURVEYOR  
WEYMOUTH, MASS.

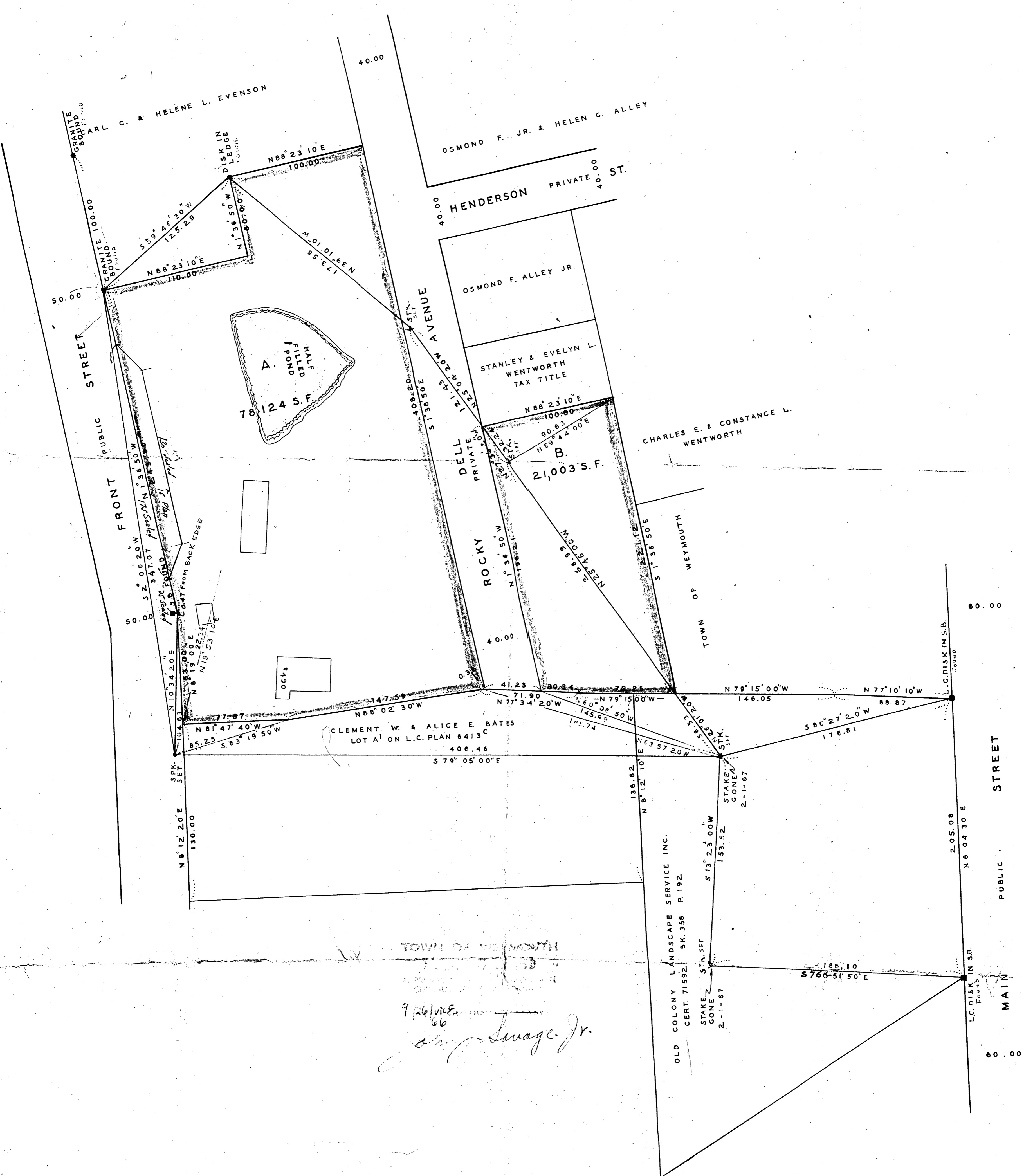


I CERTIFY THAT THIS ACTUAL SURVEY WAS MADE ON  
THE GROUND IN ACCORDANCE WITH THE LAND COURT  
INSTRUCTIONS OF 1959 ON MARCH 12, 1966.

*Paul J. Knight*  
REGISTERED LAND SURVEYOR

GROUND CONDITIONS CHECKED FEBRUARY 1, 1967  
AND ARE THE SAME EXCEPT AS NOTED.

*Paul J. Knight*



OWNER: ALBERT E. SPENCER