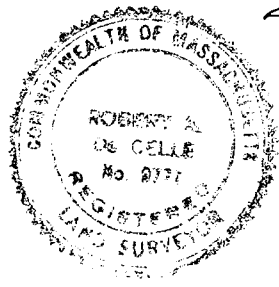


PLAN OF LAND
RANDOLPH, MASS.
 SCALE 1"=30' OCT. 17, 1966
 DECA ENGINEERING, INC.
 285 UNION ST. RANDOLPH

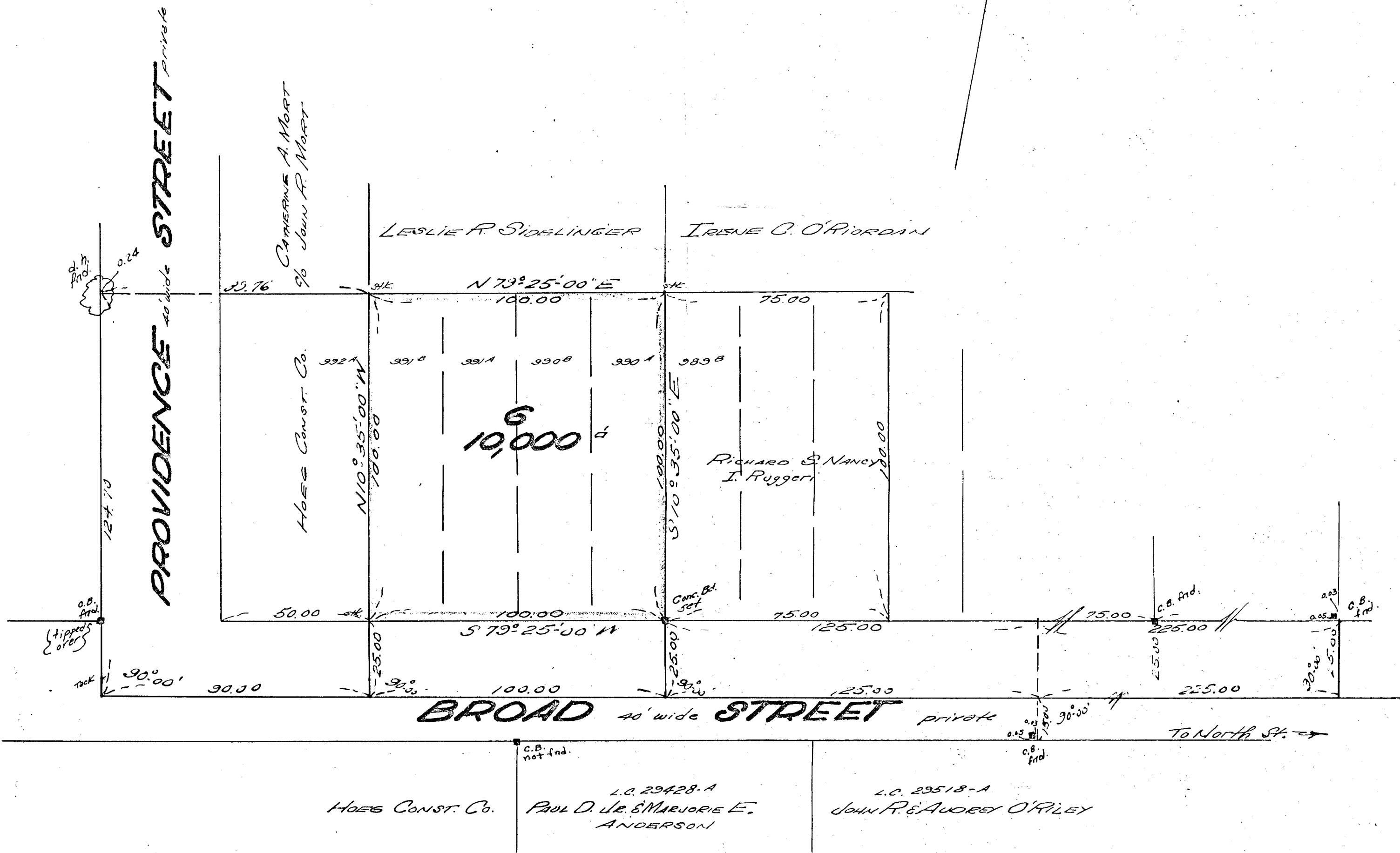
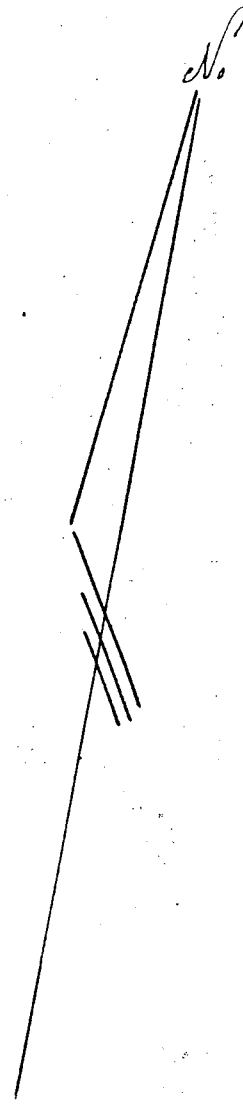


I certify that this actual survey was made on
 the ground in accordance with the Land Court
 Instructions of 1959 on September 28, 1966
 Date: OCT. 17, 1966 Robert A. DeCelle

Approval under the Subdivision Control Law
 not required.

George F. Hoag
Ed. Mann
Joseph E. MacFarland
Charles J. Macey

DRAWN: DEC. 5, 1966
 DATE: JAN. 23, 1967



See plan of "Brentonville Manor" dated
 Dec. 18, 1926, Norfolk County Registry
 Book 1735 - end.