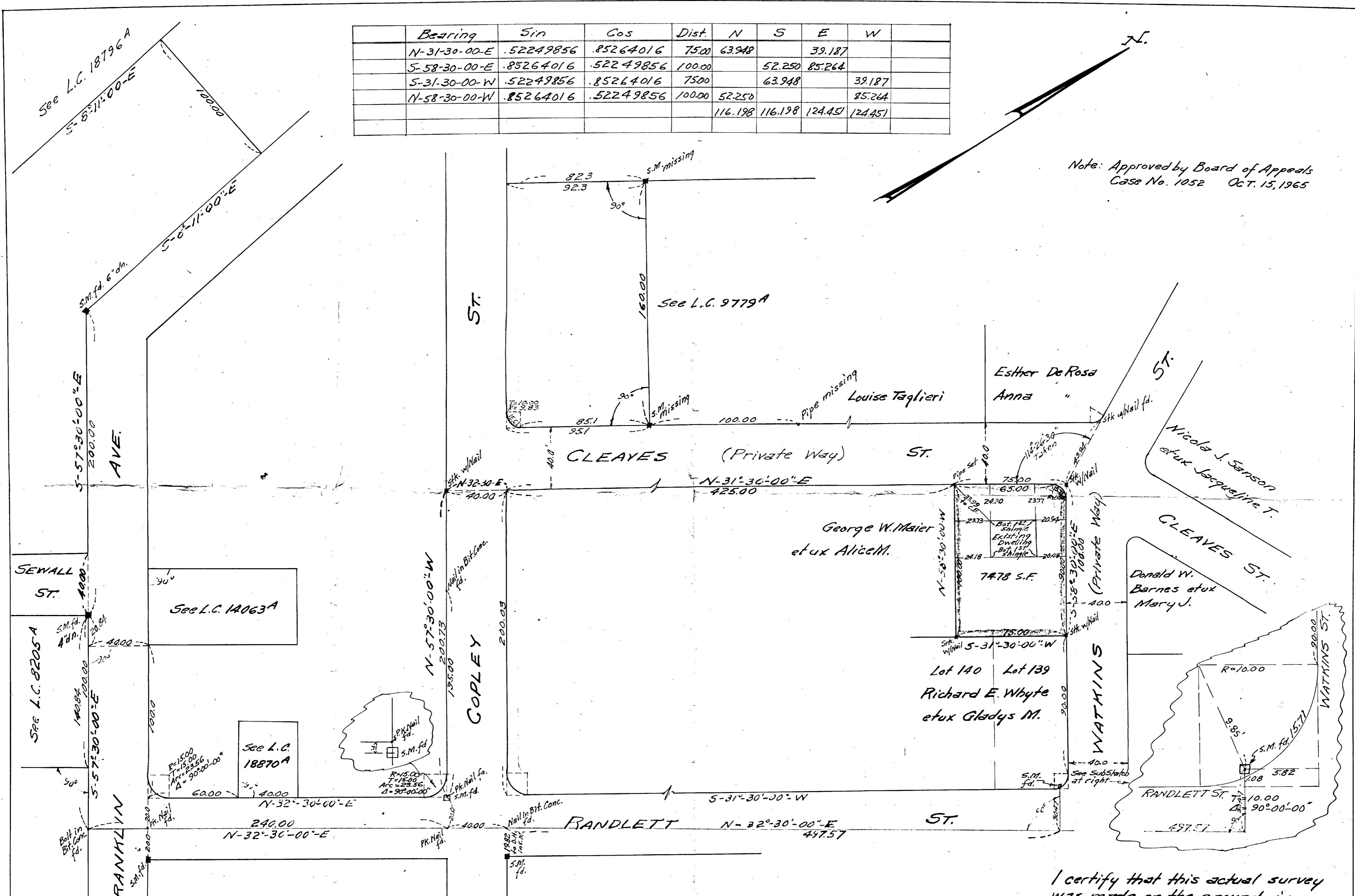


Bearing	Sin	Cos	Dist.	N	S	E	W
N-31-30-00-E	.52249856	.85264016	75.00	63.948		39.187	
S-58-30-00-E	.85264016	.52249856	100.00		52.250	85.264	
S-31-30-00-W	.52249856	.85264016	75.00		63.948		39.187
N-58-30-00-W	.85264016	.52249856	100.00	52.250			85.264
				116.198	116.198	124.451	124.451

Note: Approved by Board of Appeals  
Case No. 1052 Oct. 15, 1965



Approval under Subdivision  
Control Law not required.  
Date: 10-21-66  
David M. Jones  
Planning Director

PLAN OF LAND IN QUINCY  
SCALE: 1"=40' OCTOBER 1966  
George Baroud - R.L.S.



I certify that this actual survey  
was made on the ground in  
accordance with the Land Court  
Instructions of 1959 on:  
Date: October 8, 1966  
George Baroud  
24 CHASE ST. QUINCY, MASS.