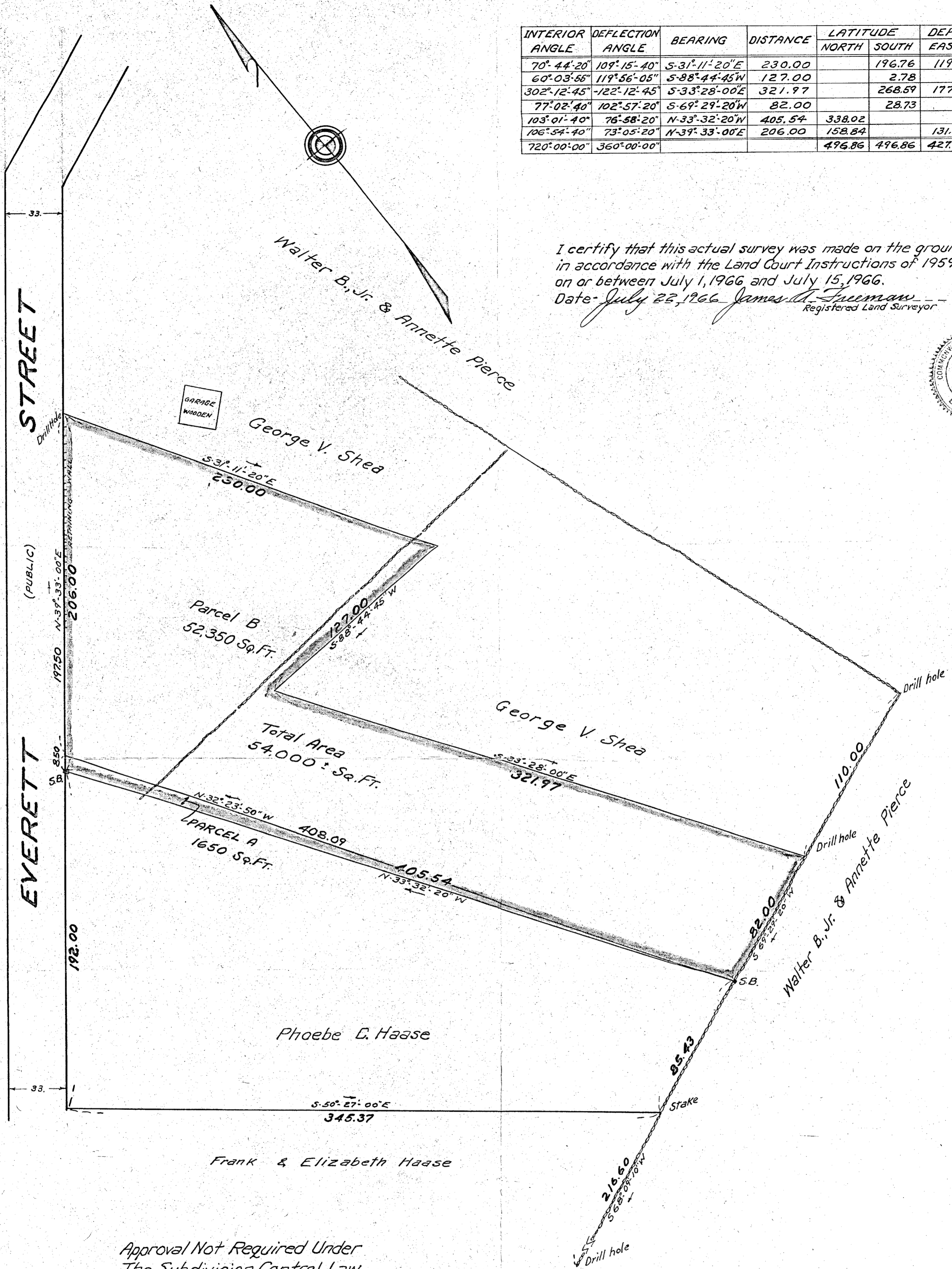
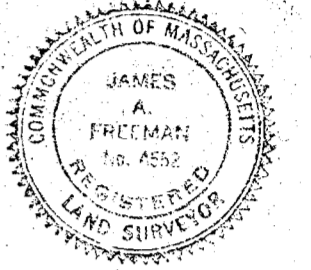


INTERIOR ANGLE	DEFLECTION ANGLE	BEARING	DISTANCE	LATITUDE		DEPARTURE	
				NORTH	SOUTH	EAST	WEST
70° 44' 20"	109° 15' 40"	S 31° 11' 20" E	230.00		196.76	119.11	
60° 03' 56"	119° 56' 05"	S 88° 44' 45" W	127.00		2.78		126.97
302° 12' 45"	-122° 12' 45"	S 33° 28' 00" E	321.97		268.59	177.55	
77° 02' 40"	102° 57' 20"	S 69° 29' 20" W	82.00		28.73		76.80
103° 01' 40"	76° 58' 20"	N 33° 32' 20" W	405.54	338.02			224.06
106° 54' 40"	73° 05' 20"	N 39° 33' 00" E	206.00	158.84		131.17	
720° 00' 00"	360° 00' 00"			496.86	496.86	427.83	427.83

I certify that this actual survey was made on the ground in accordance with the Land Court Instructions of 1959 on or between July 1, 1966 and July 15, 1966.  
 Date: July 22, 1966 James A. Freeman  
 Registered Land Surveyor



Approval Not Required Under  
 The Subdivision Control Law.  
 Norfolk Planning Board.  
 Date: 9-7-66

*Ray Johnson*

Plan of Land in  
**NORFOLK**  
 MASSACHUSETTS

Scale - 40 feet to an inch

July 1966. JAMES A. FREEMAN, C.E.  
 429 NORTH MAIN STREET  
 ATTLEBORO, MASSACHUSETTS