

PLAN OF LAND IN
WEYMOUTH, NORFOLK, COUNTY, MASS.

SCALE 1" = 20'

AUGUST 15, 1966.

THE SCHUYLER CLAPP CO.
BRAINTREE MASS.

OWNER: RICHARD LANG
+
RALSTON YOCUM

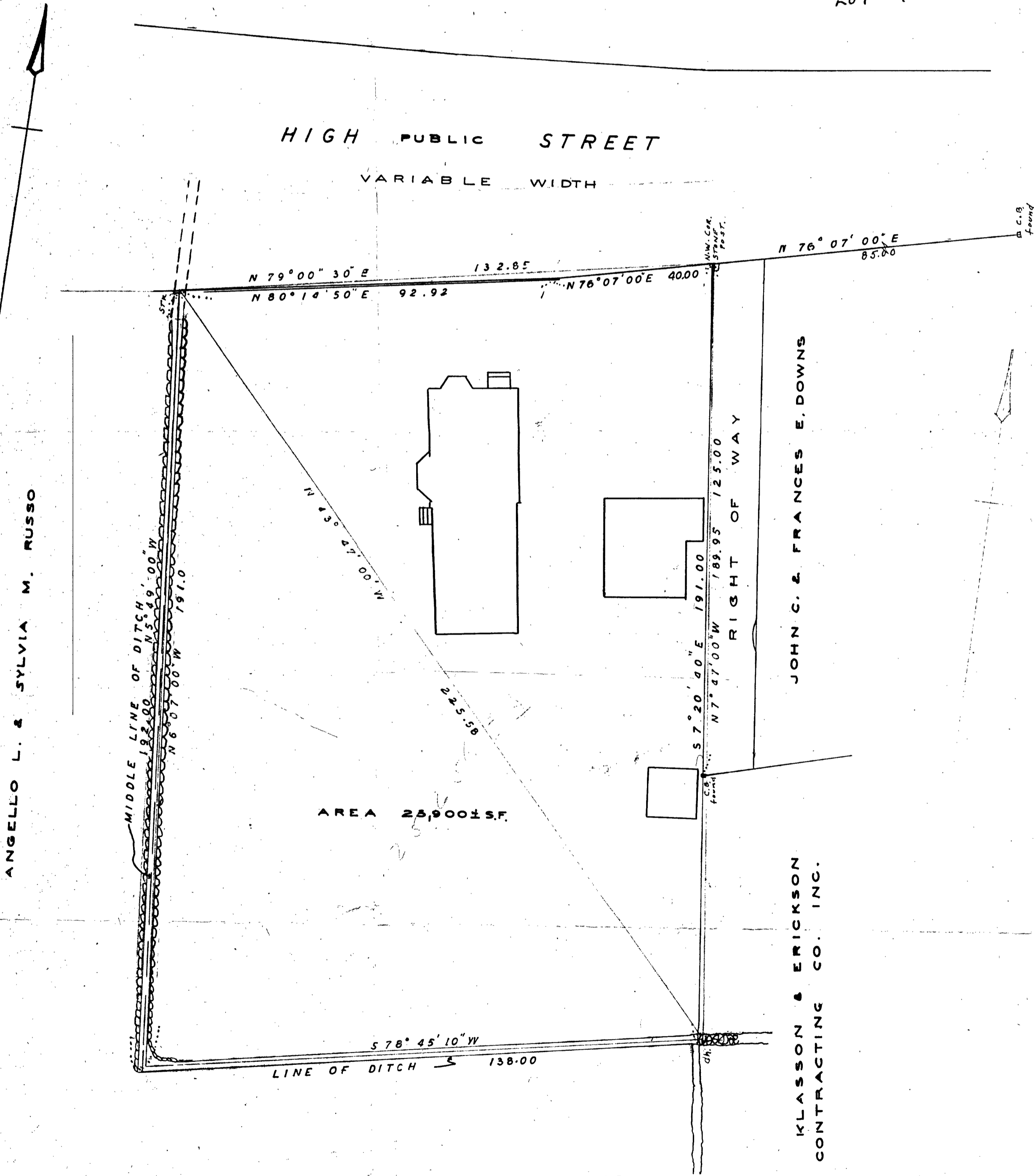
TOWN OF WEYMOUTH
PLANNING BOARD

APPROVAL UNDER THE SUBDIVISION
CONTROL LAW NOT REQUIRED.

John J. Savage, Jr.
15
66
CHAMAN SECRETARY



WEY ATLAS Sheet 23
Block 315
LOT 8



ANGELLO L. & SYLVIA M. RUSSO

I CERTIFY THAT THIS ACTUAL SURVEY WAS MADE
ON THE GROUND IN ACCORDANCE WITH THE LAND COURT
INSTRUCTIONS OF 1959 ON JULY 21, 1966

Frederick T. Webb
REGISTERED LAND SURVEYOR