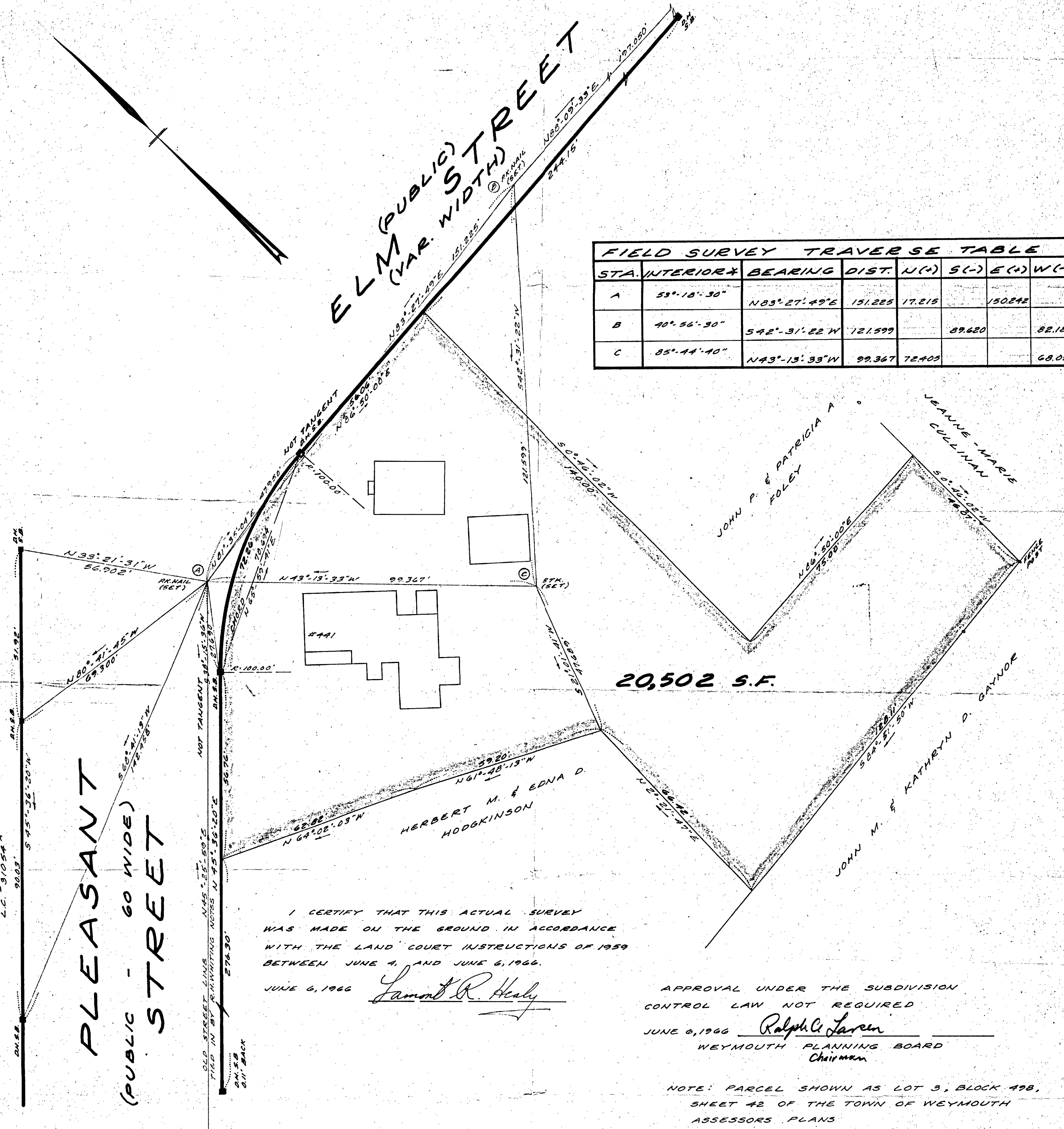


ELM (PUBLIC) STREET
(VAR. WIDTH)

FIELD SURVEY TRAVERSE TABLE							
STA.	INTERIOR*	BEARING	DIST.	N(+)	S(-)	E(+)	W(-)
A	53°-18'-30"	N83°-27'-49"E	151.225	17.215		150.242	
B	40°-56'-30"	S42°-31'-22"W	72.1599		89.620		82.188
C	85°-44'-40"	N43°-13'-33"W	99.367	72.403			68.054



PLEASANT STREET
(PUBLIC - 60 WIDE)

I CERTIFY THAT THIS ACTUAL SURVEY WAS MADE ON THE GROUND IN ACCORDANCE WITH THE LAND COURT INSTRUCTIONS OF 1959 BETWEEN JUNE 4, AND JUNE 6, 1966.

JUNE 6, 1966 Lamont R. Healy

APPROVAL UNDER THE SUBDIVISION CONTROL LAW NOT REQUIRED
JUNE 6, 1966 Ralph L. Larkin
WEYMOUTH PLANNING BOARD
Chairman

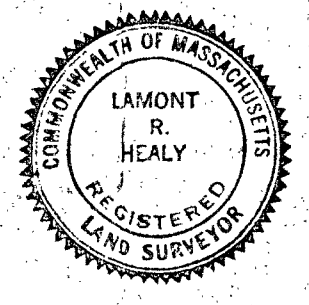
NOTE: PARCEL SHOWN AS LOT 3, BLOCK 498, SHEET 42 OF THE TOWN OF WEYMOUTH ASSESSORS PLANS

PLAN OF LAND IN WEYMOUTH, MASS.

FOR PAUL DOWD

SCALE: 1"=20'

JUNE 6, 1966



LAMONT R. HEALY, INC. - LAND SURVEYORS
50. WEYMOUTH, MASS.