

34668A

PLAN OF LAND IN  
WEYMOUTH, NORFOLK, COUNTY, MASS.

SCALE 1"=30' AUGUST 10, 1966.

TOWN OF WEYMOUTH  
PLANNING BOARD

APPROVAL UNDER THE SUBDIVISION  
CONTROL LAW NOT REQUIRED.

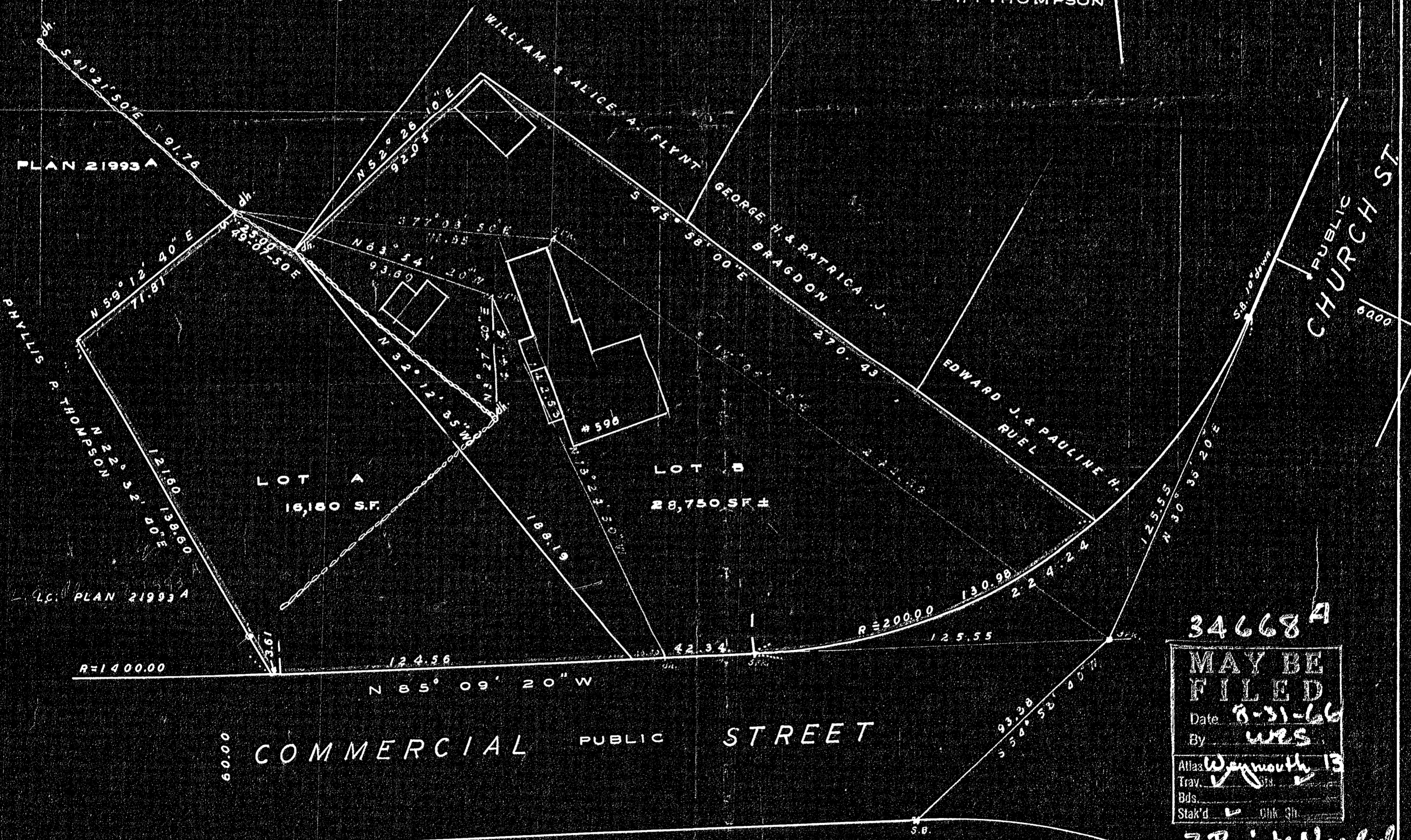
*John J. Savage Jr.*  
CHAIRMAN-SECRETARY  
8-15-66

THE SCHUYLER CLAPP CO.  
BRAintree MASS.



CROWLEY & OUELLET  
ASSOCIATES, INC.

OWNER: GEORGE H. THOMPSON



34668A  
MAY BE  
FILED  
Date 8-31-66  
By WES  
Atlas Weymouth 13  
Trav. Sta. 1  
Bds. 1  
Stak'd 1

2 Prints Needed

DECREE PLAN	
Order	Papers
Traverse	Map
Atlas	
Drawn by	
Math. by	
Inspected by	
Approved	

FILED  
AUG 1 1966  
LAND COURT

I CERTIFY THAT THIS ACTUAL SURVEY WAS MADE  
ON THE GROUND IN ACCORDANCE WITH THE LAND COURT  
INSTRUCTIONS OF 1959 AUG. 3&9, 1960

*Frederick T. Webb*  
REGISTERED LAND SURVEYOR

JN 16691

34668A