

JOAN (Private) TERRACE

Street line information from plan by Tassel and Healy, Surveyors, plan No. 595 in 1964.

PARIS (Private) STREET

Land Court Plan No. 15410A
N6-55-50E
99.72
(Measured)

"Class A Survey"

Sta.	Interior Angle	Defl. Angle	Azimuth	Dist.	+Sine	-Sine	+Cos.	-Cos.
1	89-28-15	90-31-45	277-27-35	150.00	148.73	19.47	124.09	19.47
2	90-31-45	89-28-15	6-55-50	125.00	15.08	148.73	124.09	19.47
3	89-28-15	90-31-45	97-27-35	150.00	148.73	15.08	124.09	19.47
4	90-31-45	89-28-15	186-55-50	125.00	163.81	163.81	143.56	143.56
4	360-00-00	360-00-00						

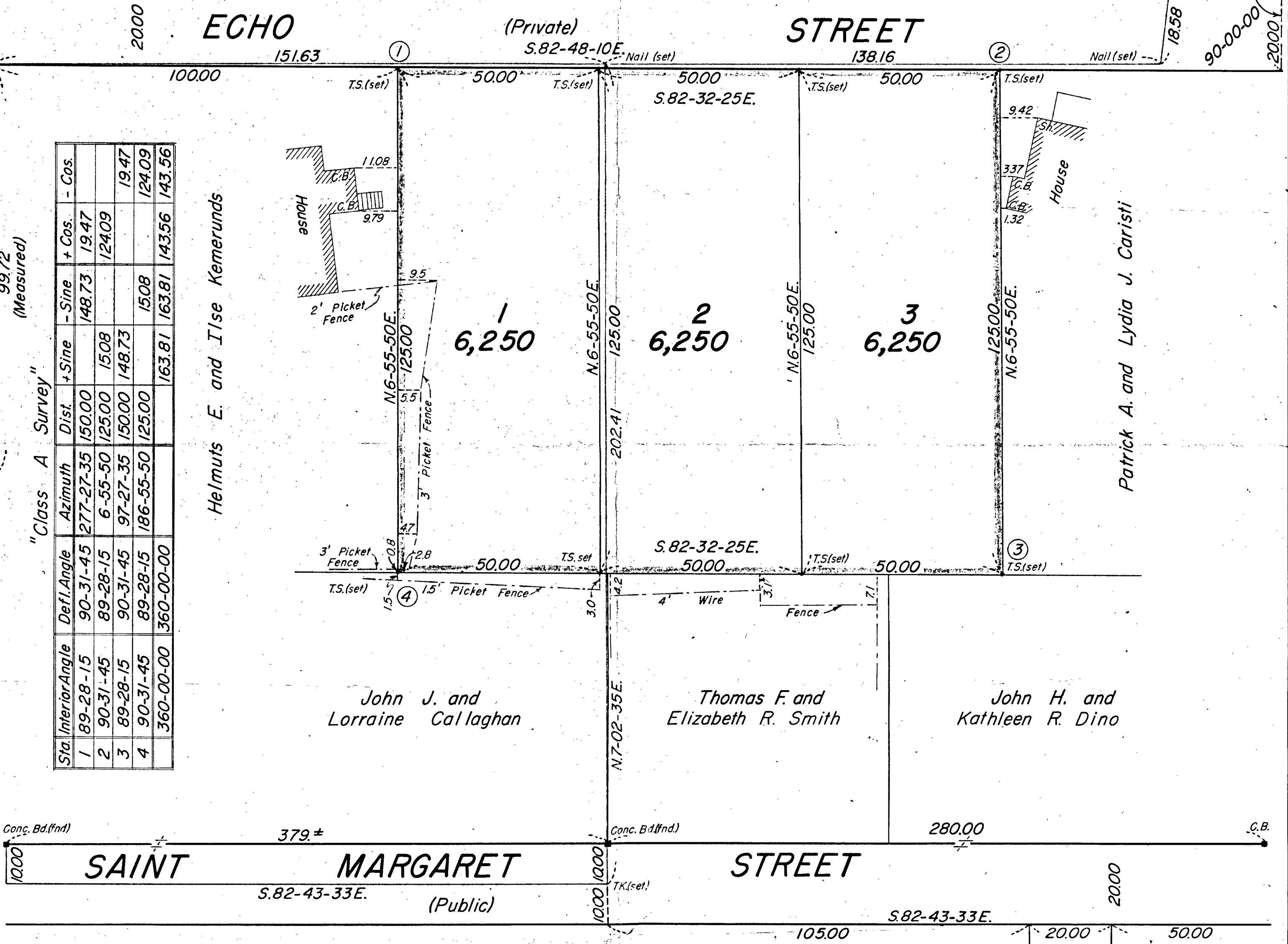
Helmuts E. and Ilse Kemerunds

Patrick A. and Lydia J. Caristi

John J. and Lorraine Callaghan

Thomas F. and Elizabeth R. Smith

John H. and Kathleen R. Dino



PLAN OF LAND
IN
WEYMOUTH, MASS.

Scale: 20 feet to an inch. May 24, 1966.
Perkins Engineering Associates, Rockland, Mass.

I certify that this actual survey was made on the ground in accordance with the Land Court Instructions of 1959 between May 6, 1966 and May 20, 1966.

May 24, 1966 Joseph G. Monahan
Registered Land Surveyor.



Land Court Plan No. 30170 B