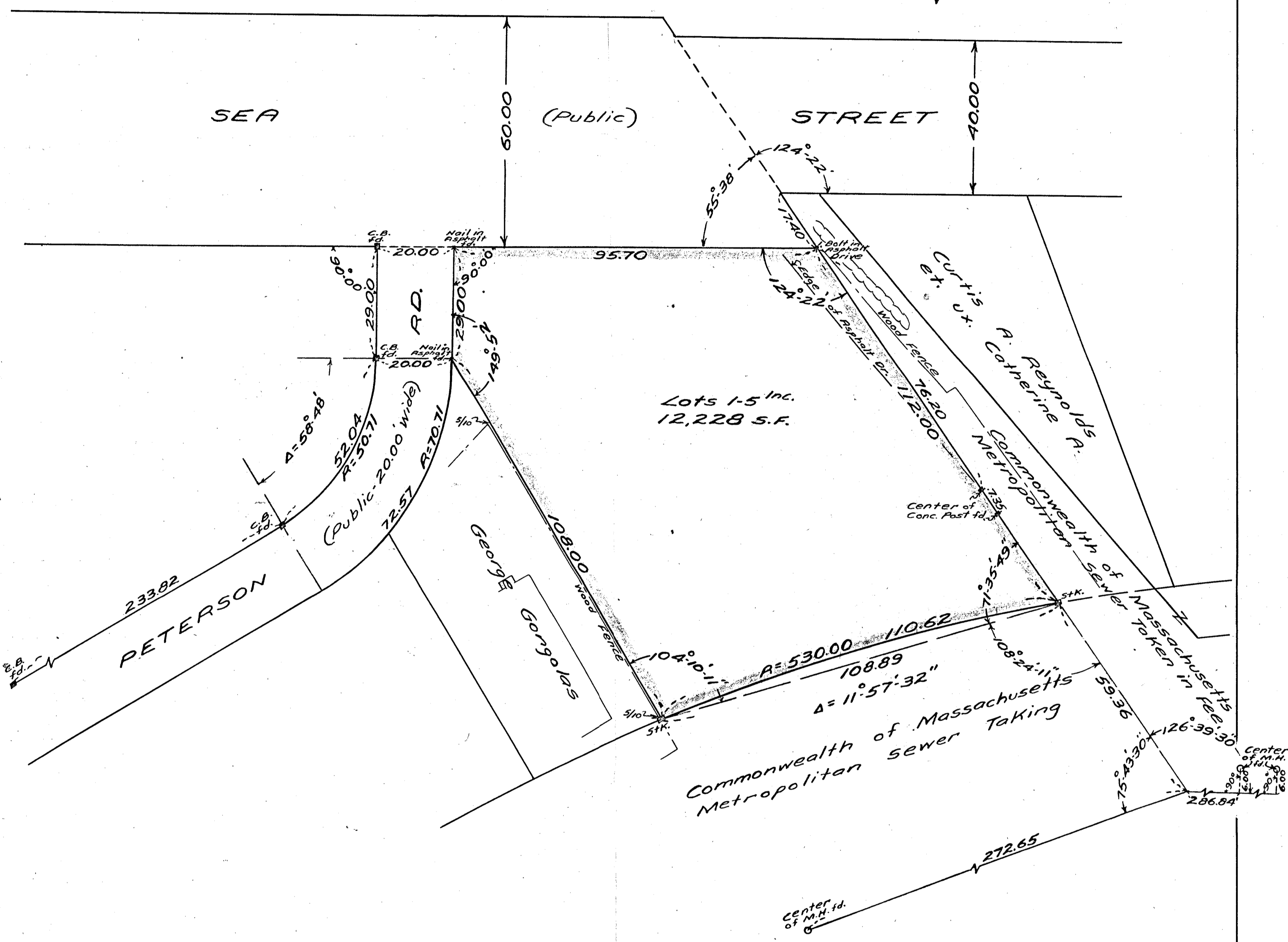


N.



Plan of Land in Quincy, Mass.
 Scale 20 feet to an inch
 August 5, 1966
 Ernest W. Branch Inc., Civil Engineers
 Adams Building, 1354 Hancock St, Quincy

I certify that this actual survey was made on the ground in accordance with the Land Court Instructions of 1959 on June 8, 1966.

Aug. 5, 1966: Robert S. Booth, Jr. Engineer



Approval Under Subdivision
 Control Law Not Required.
 Date: 8/2/66
 Director of Planning