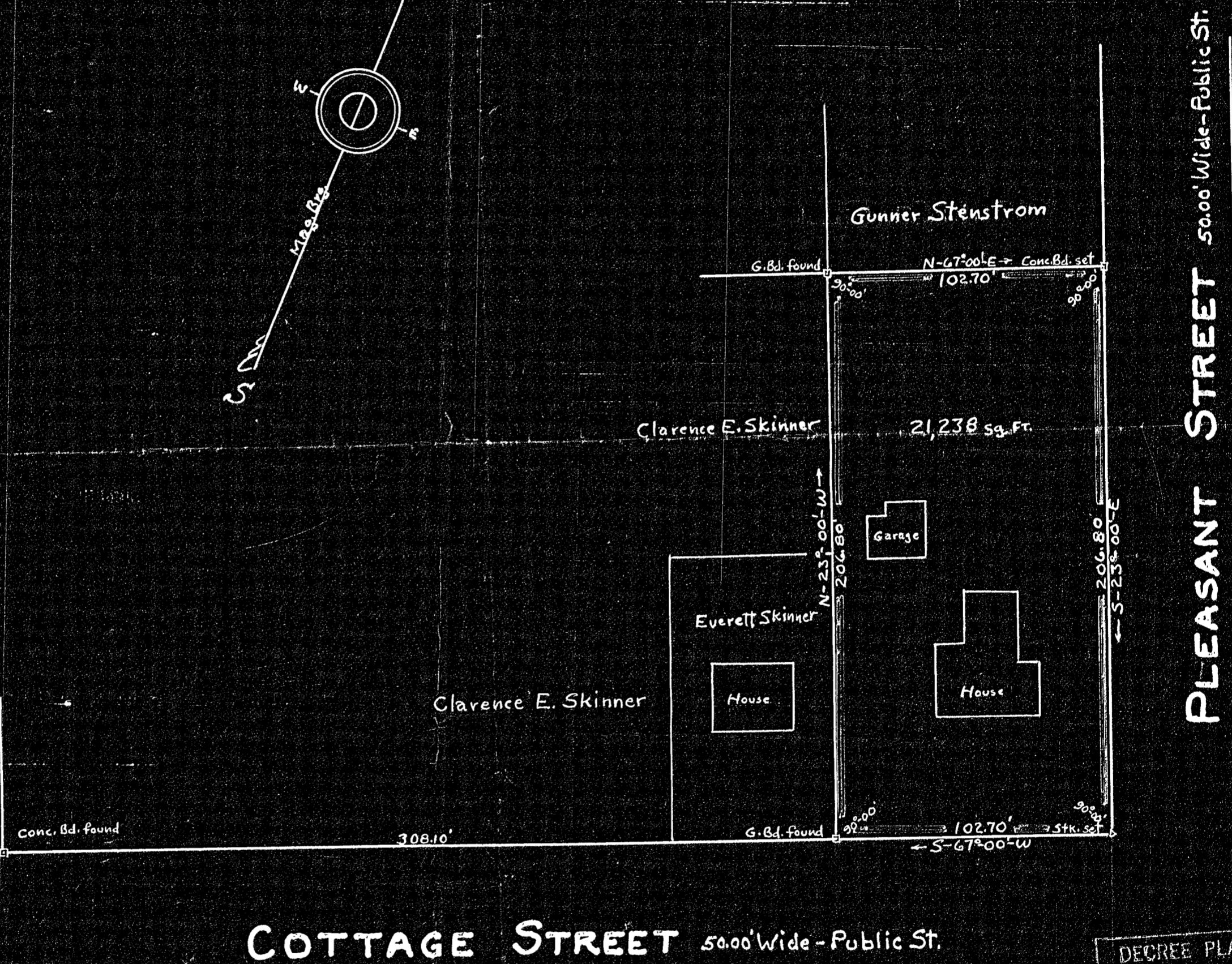
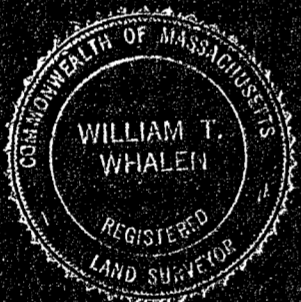
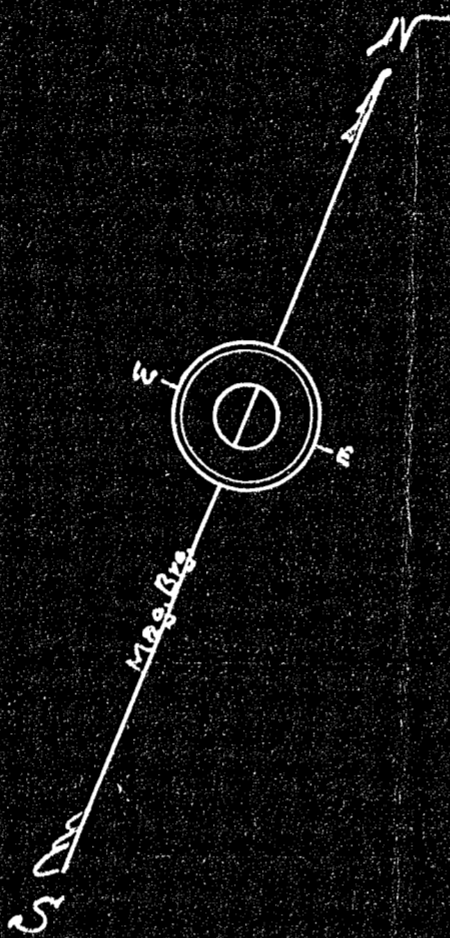
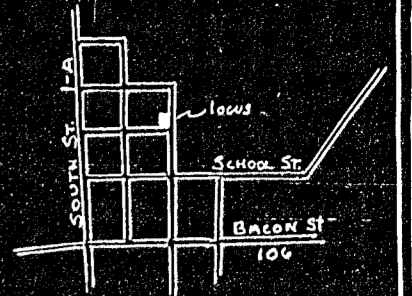


34556A

LAND IN PLAINVILLE, MASS. SURVEYED FOR  
**DONALD R. AND MARY J. PERREAULT**  
 APRIL, 1966 The W.T. Whalen Engineering Co. SCALE, 1"=40'



**COTTAGE STREET** 50.00' Wide - Public St.

DEGREE PLAN

Sheet	Pages
Revised	filled
Atlas	
Drawn by	
Math by	
Inspected by	
Approved	

Approval under the Sub-Division Control Act not necessary

*William E. Clark* Chairman  
*Frederic E. Hastings* Secretary  
*James W. Franklin*  
*John E. Linn*  
*William B. Gilg*  
 16 May 1966

Bearing	Length	Lat. N	Lat. S	Dep. E	Dep. W
N-23° 00' -W	206.80	80.803			190.359
N-67° 00' -E	102.70	+0.128		94.535	
S-23° 00' -E	206.80		80.803	190.359	
S-67° 00' -W	102.70		+0.128	94.535	
		120.931	120.931	284.894	284.894

34556  
**MAY BE FILED**  
 Date 6-16-66  
 By WES  
 Atlas Norfolk Co. 42  
 Trav. 21 815 ✓  
 Bld. ✓  
 1966 21

No Prints Needed  
 I certify this actual survey was made on the ground in accordance with Land Court Instructions of 1959 between April 11 and 13, 1966  
 William T. Whalen

34556A