

(Pending)

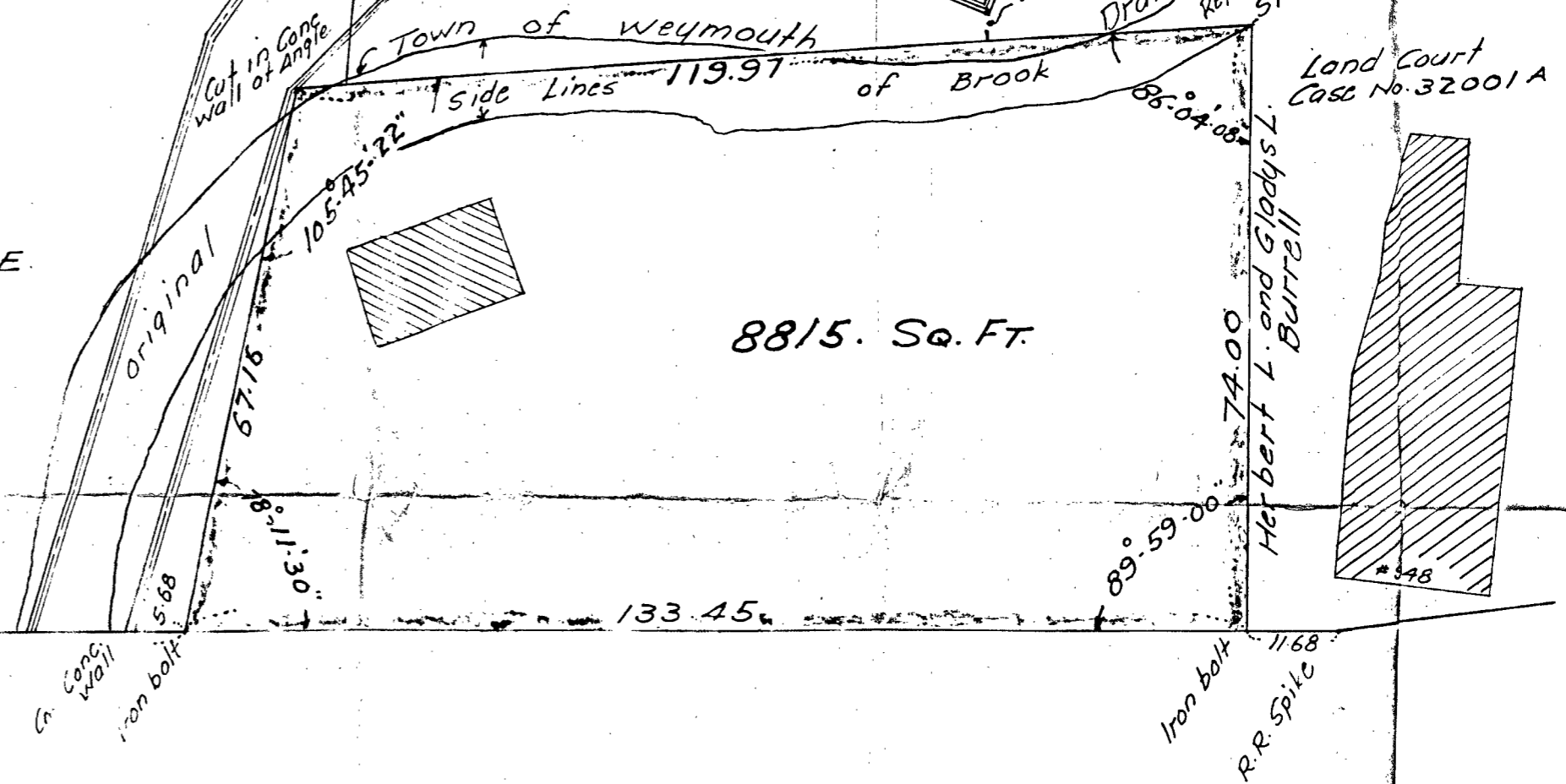
George Brady

Court Case No. 34047A

Land

Alphonso and Mary E. Pecoraro

8815. Sq. Ft.



S.B. PC

215.94

BROAD

(Public - Variable Width)

STREET

Land Court Case No. 11926A

Plan of Land in Weymouth
Scale: 1"=20' January, 1966
Edward A. Leone - Surveyor
127 Merrymount Road, Quincy

Weymouth Planning Board
Approval under Subdivision
Control Law not required.
Date: July 23, 1966
John J. Sachin
VICE-CHAIRMAN

179-59-60
111-06-30
68-52-20 = 93290/21 52.46 = 49.87
49-20 = 7613497 x 6895 = 50.21

Note - 49.87 should be 50.00 ft.
a very old layout. Street lines
have been fairly well established by
previous Lt. St. Cons. @3

I hereby Certify that this actual Survey was
made on the ground in accordance with the
Land Court Instructions of 1959 on or between
August 7, 1965 and January 22, 1966.
Edward A. Leone - Surveyor

