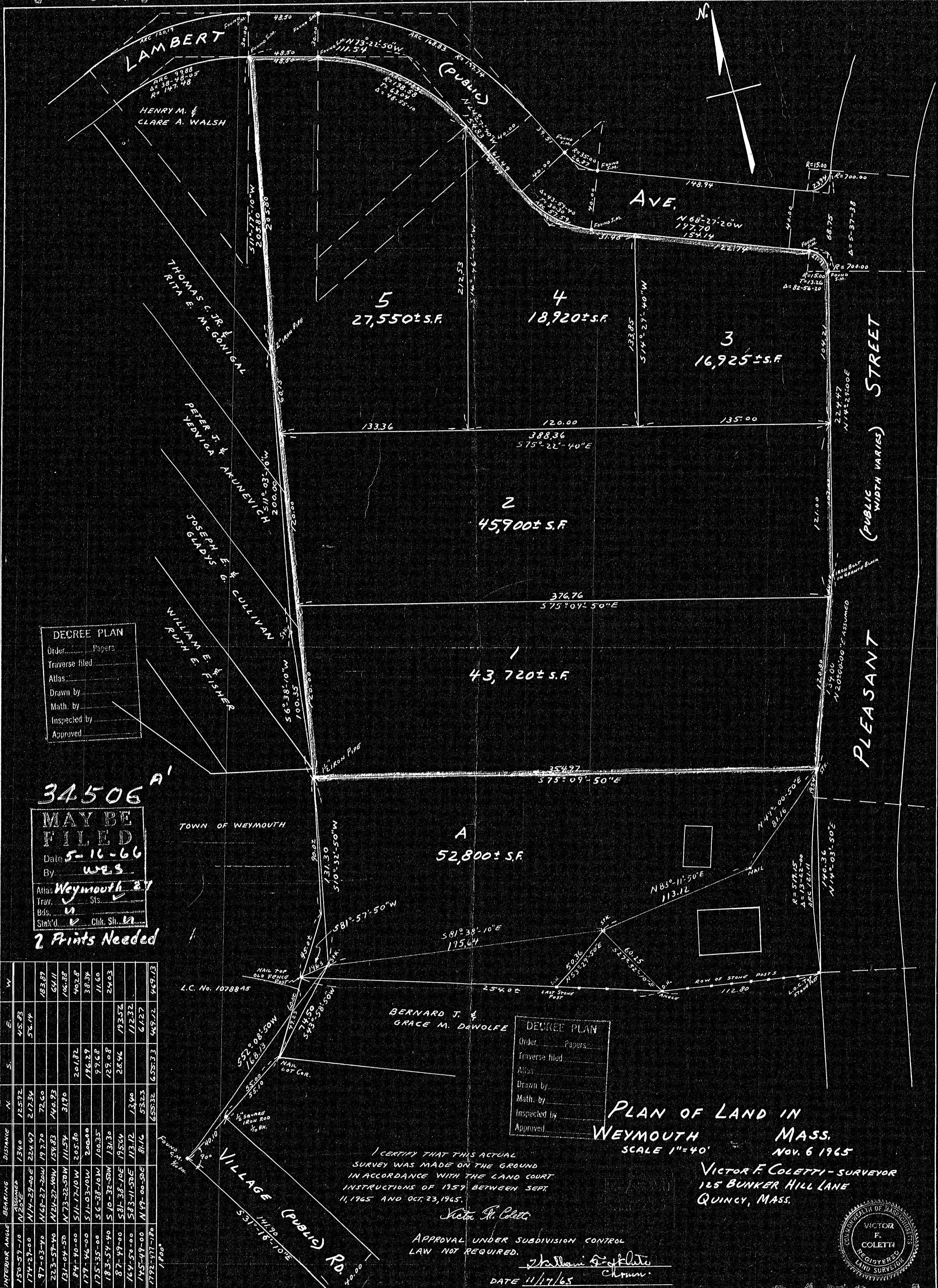


34506A



DECREE PLAN  
 Order \_\_\_\_\_ Papers \_\_\_\_\_  
 Traverse filed \_\_\_\_\_  
 Atlas \_\_\_\_\_  
 Drawn by \_\_\_\_\_  
 Math. by \_\_\_\_\_  
 Inspected by \_\_\_\_\_  
 Approved \_\_\_\_\_

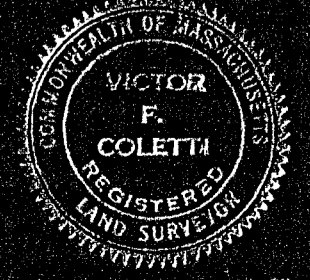
34506A  
**MAY BE FILED**  
 Date 5-16-66  
 By WES  
 Atlas Weymouth 27  
 Trav. Sls. ✓  
 Bds. ✓  
 Sta'd. ✓ Chk. Sh. ✓  
 2 Prints Needed

INTERIOR ANGLE	BEARING	DISTANCE	N	S	E	W
150°-59'-10"	N126°-00'-00"E	1734.0	125.72		45.83	
174°-27'-00"	N14°-29'-40"E	224.47	217.34		56.14	
97°-03'-40"	N168°-27'-20"W	197.70	72.60		183.89	
223°-57'-40"	N24°-27'-40"W	154.83	140.93		64.11	
131°-04'-50"	N73°-22'-50"W	111.54	31.90		106.88	
84°-40'-00"	S11°-17'-10"W	205.80		201.82	462.8	
179°-46'-00"	S11°-03'-10"W	205.00		196.29	38.34	
175°-35'-00"	S6°-38'-10"W	100.35		97.68	11.60	
183°-54'-40"	S10°-32'-50"W	131.30		129.08	24.63	
87°-49'-00"	S81°-38'-10"E	195.64		28.46	193.56	
164°-50'-00"	S83°-11'-50"E	113.12		23.00	112.32	
145°-47'-00"	N49°-00'-50"E	81.76	53.23		67.27	
172°-07'-18"	N49°-00'-50"E	81.76	65.33		49.12	
180°			65.33		49.12	

DECREE PLAN  
 Order \_\_\_\_\_ Papers \_\_\_\_\_  
 Traverse filed \_\_\_\_\_  
 Atlas \_\_\_\_\_  
 Drawn by \_\_\_\_\_  
 Math. by \_\_\_\_\_  
 Inspected by \_\_\_\_\_  
 Approved \_\_\_\_\_

PLAN OF LAND IN WEYMOUTH MASS.  
 SCALE 1"=40'  
 Nov. 6 1965

VICTOR F. COLETTI - SURVEYOR  
 125 BUNKER HILL LANE  
 QUINCY, MASS.



I CERTIFY THAT THIS ACTUAL SURVEY WAS MADE ON THE GROUND IN ACCORDANCE WITH THE LAND COURT INSTRUCTIONS OF 1959 BETWEEN SEPT. 11, 1965 AND OCT. 23, 1965.

APPROVAL UNDER SUBDIVISION CONTROL  
 LAW NOT REQUIRED.

DATE 11/17/65

34506A