

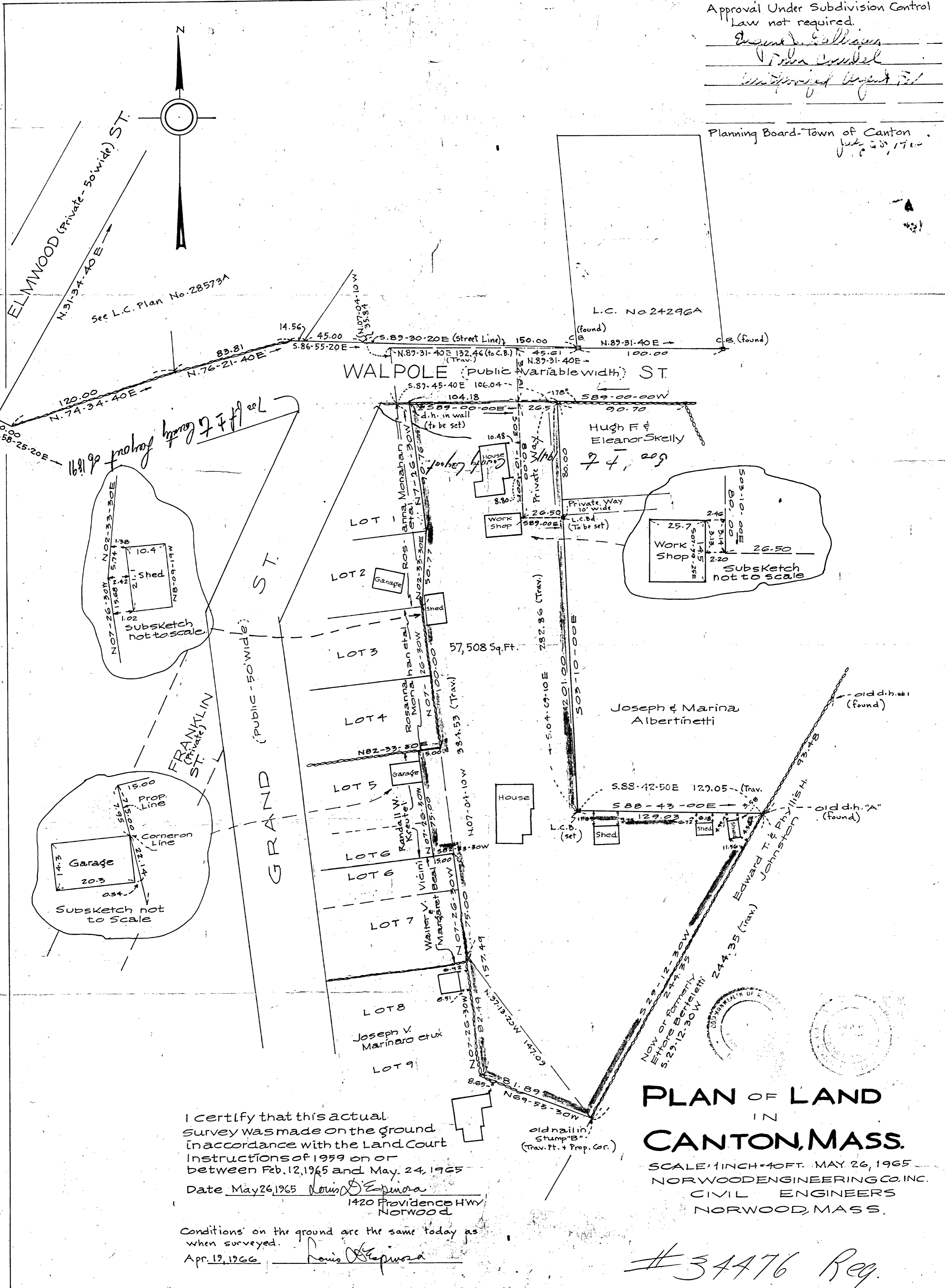
Approval Under Subdivision Control
Law not required.

Ernest D. Bellinger

V. J. Connel

Undersigned Agent

Planning Board - Town of Canton
July 23, 1965



I certify that this actual survey was made on the ground in accordance with the Land Court Instructions of 1959 on or between Feb. 12, 1965 and May 24, 1965

Date May 26, 1965 *Louis D. Espinosa*
1420 Providence Hwy
Norwood

Conditions on the ground are the same today as when surveyed.
Apr. 19, 1966 *Louis D. Espinosa*

PLAN OF LAND IN CANTON, MASS.

SCALE: 1 INCH = 40 FT. MAY 26, 1965
NORWOOD ENGINEERING CO. INC.
CIVIL ENGINEERS
NORWOOD, MASS.

#34476 Reg.