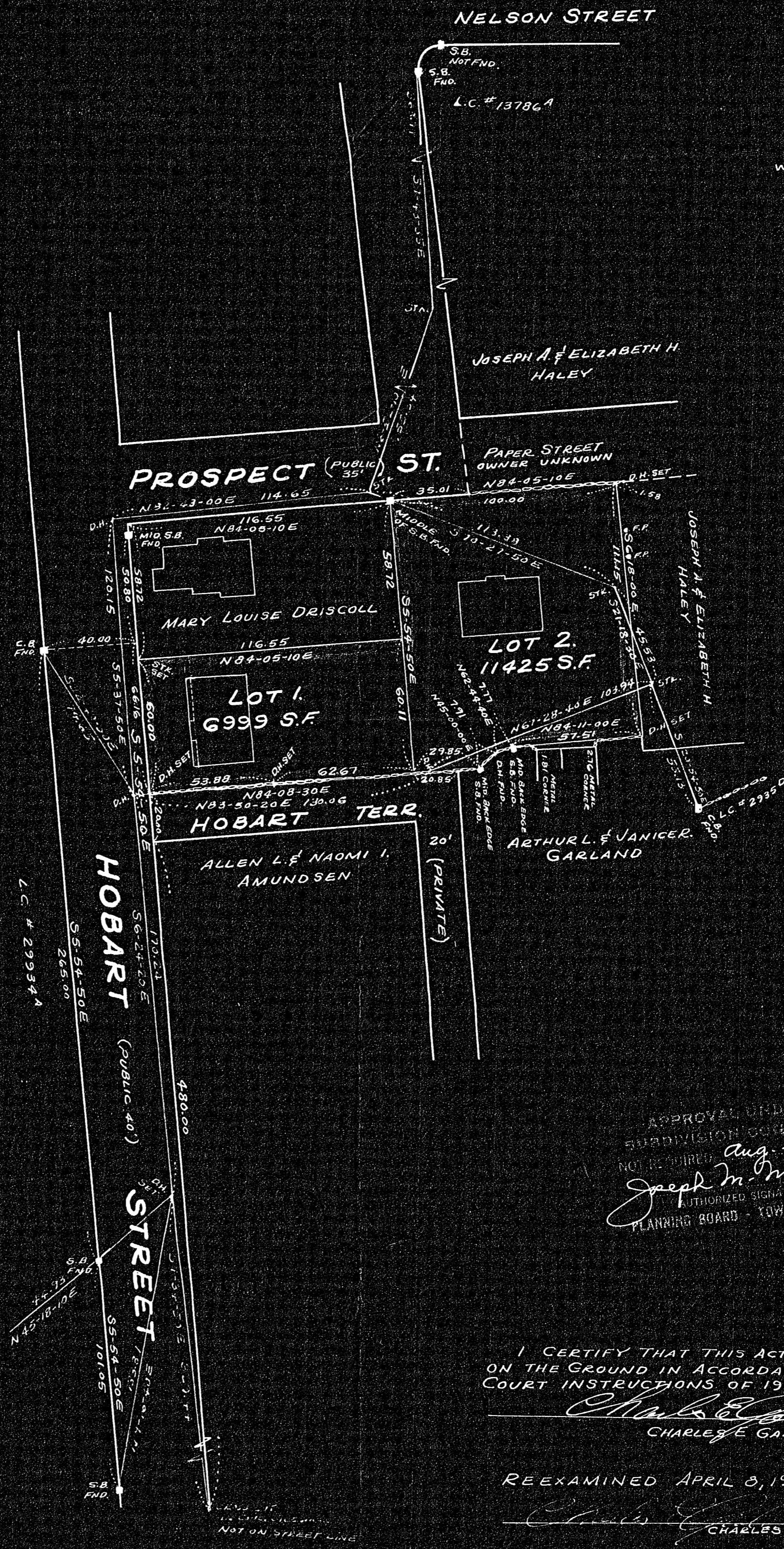
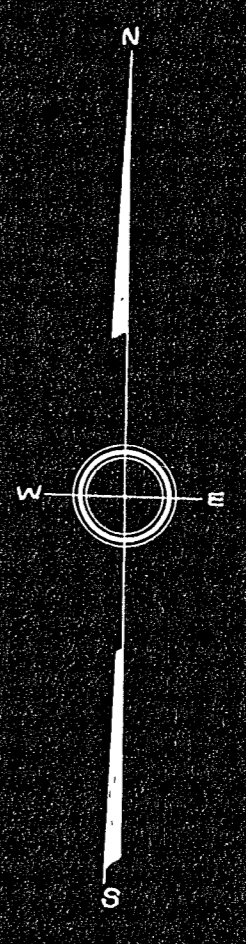
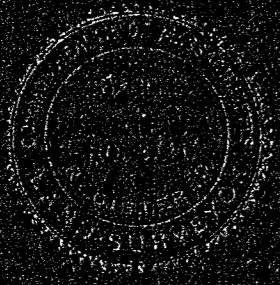


PLAN OF LAND IN BRAINTREE, NORFOLK COUNTY, MASS.

SCALE 1" = 40' JULY 29, 1965
APRIL 8, 1966

GALE ENGINEERING Co. INC.
373 WASHINGTON STREET
BRAINTREE, MASS.



APPROVAL UNDER THE
SUBDIVISION CONTROL LAW
NOT REQUIRED *Aug. 3, 1965*
Joseph M. Magaldi
AUTHORIZED SIGNATURE OR
PLANNING BOARD - TOWN OF BRAINTREE

I CERTIFY THAT THIS ACTUAL SURVEY WAS MADE
ON THE GROUND IN ACCORDANCE WITH THE LAND
COURT INSTRUCTIONS OF 1959 ON JULY 13, 1965.
Charles E. Gale 7-30-65
CHARLES E. GALE DATE

REEXAMINED APRIL 8, 1966
Charles E. Gale
CHARLES E. GALE

34.44
4-11-66
R.C.C.
Braintree Pl. 3011, 3009
filed
2 prints filed