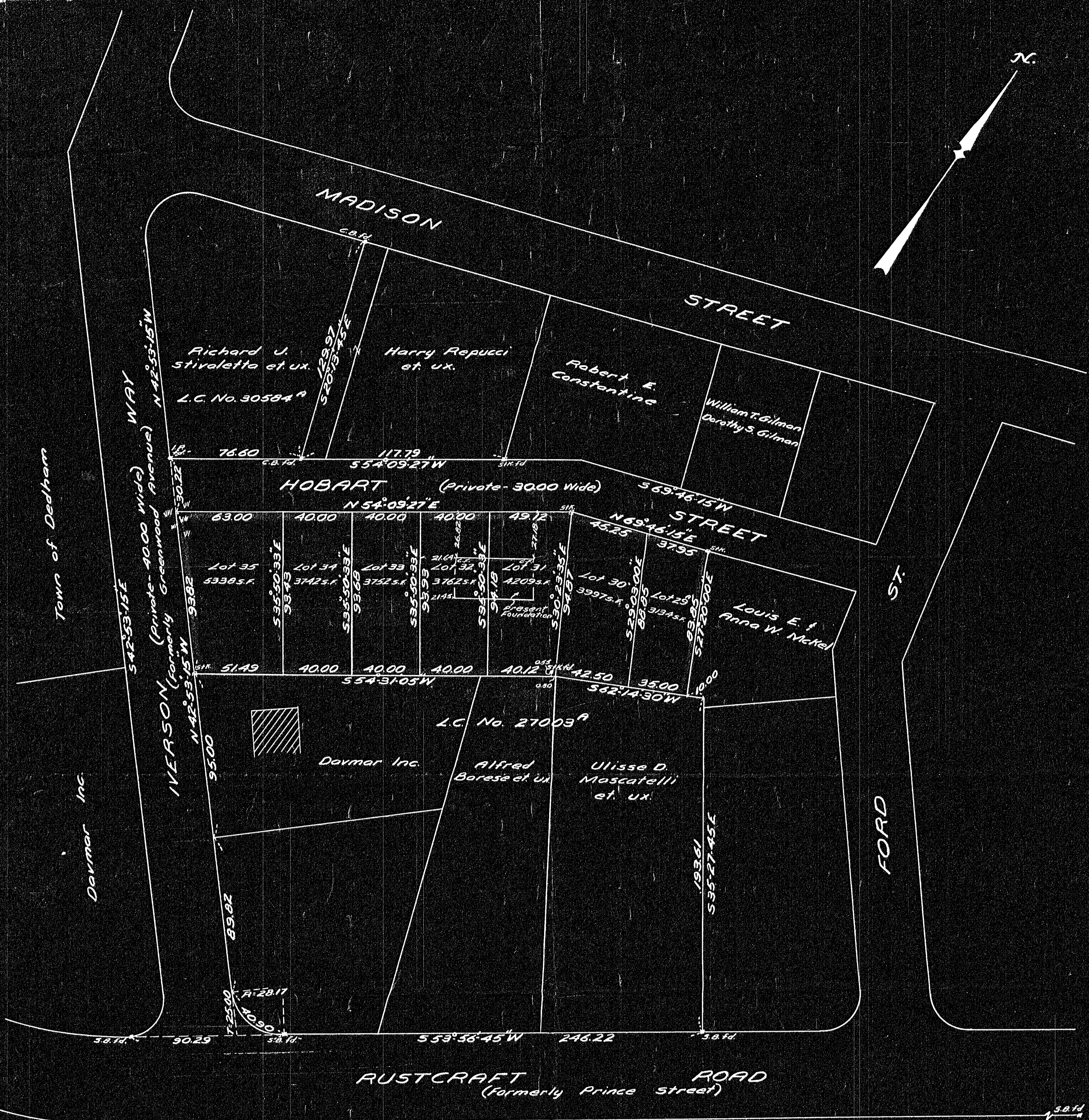
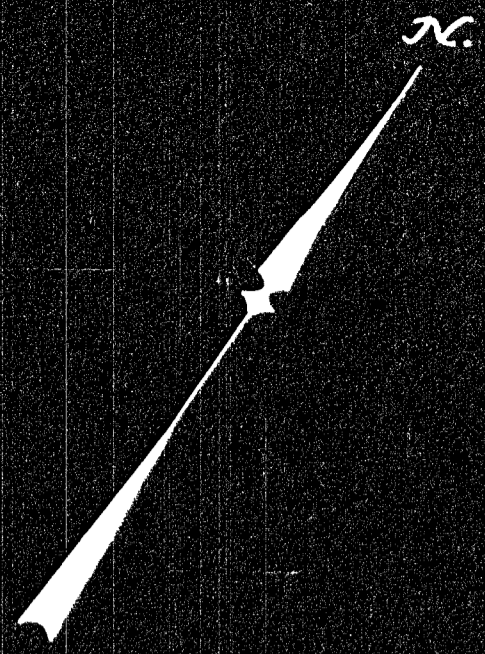


34403A



RUSTCRAFT ROAD (Formerly Prince Street)

DECREE PLAN
Order: _____
Traverse filed: _____
Atlas: _____
Drawn by: _____
Math. by: _____
Inspected by: _____
Approved: _____

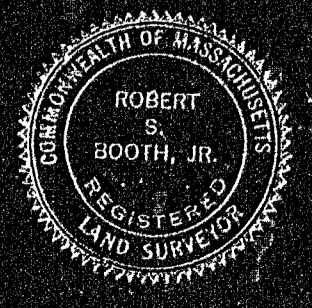
Plan of Land in Dedham, Mass.  
 Scale 40 feet to an inch  
 May 18, 1965  
 Ernest W. Branch Inc., Civil Engineers  
 301 Adams Building, Quincy

Approval Under Subdivision  
 Control Law Not Required.  
 Date: July 10, 1965  
 Joseph J. Balthus  
 Dedham Planning Board

I certify that this actual survey was made on  
 the ground in accordance with Land Court  
 Instructions of 1959, on May 7, 1965.  
 May 18, 1965: Robert S. Booth, Jr. Engineer  
 I certify that the conditions on the ground  
 today are as shown above.  
 March 24, 1966: Robert S. Booth, Jr. Engineer

34403A  
 3-25-66  
 R.C.C.  
 Dedham Pl. 24  
 need need 2 pr.  
 Hobart St. or Rd.

RECORDED  
INDEXED



34403A