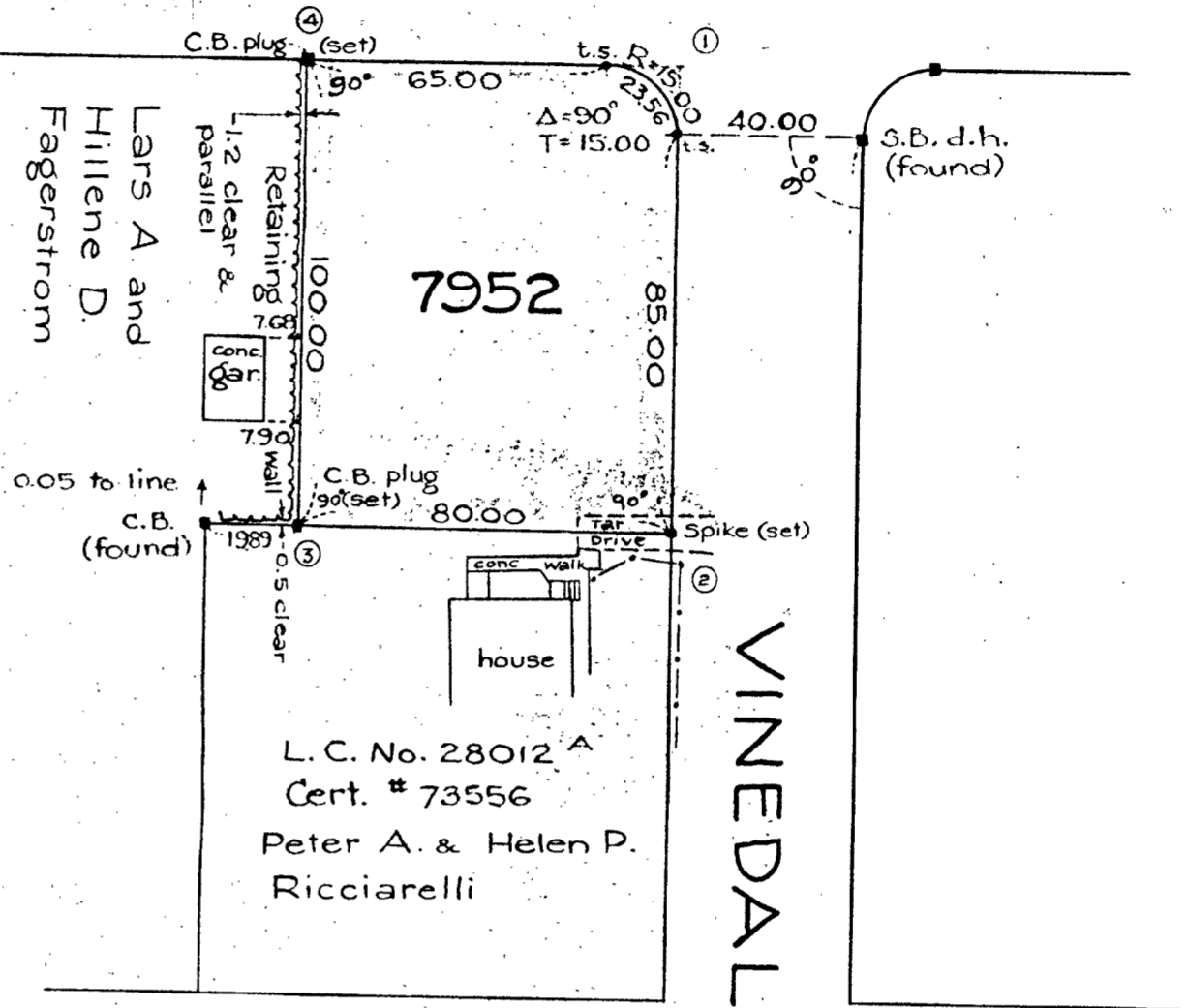
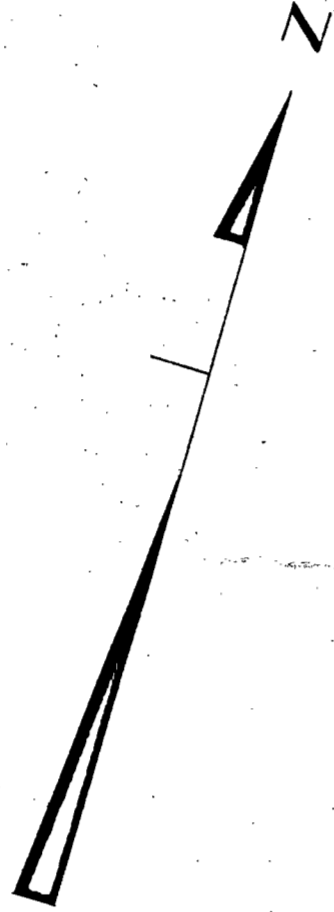


PLEASANT

VIEW (Public - 40' wide) AVENUE

200.00



7952

L.C. No. 28012 A
Cert. # 73556
Peter A. & Helen P.
Ricciarelli

TREFTON

VINEDALE

DRIVE

(40' wide - Public)

ROAD

AUDUBON

AVENUE

S.B. d.h. (found)
L.C. No. 19765 A

#34400 - Reg.
PLAN OF LAND
IN
BRAINTREE, MASS.

Scale: 40 feet to an inch. February 4, 1966.
Lewis W. Perkins & Son, Eng'rs., Hingham, Mass.

I certify that this actual survey was made on the ground in accordance with the Land Court Instructions of 1959 on December 9, 1965.

William W. Perkins, Eng'r.

APPROVAL UNDER THE
SUBSIDIARY CONTROL LAW
Mar. 11, 1966
Joseph M. Magaldi
PLANNING BOARD - TOWN OF BRAINTREE

