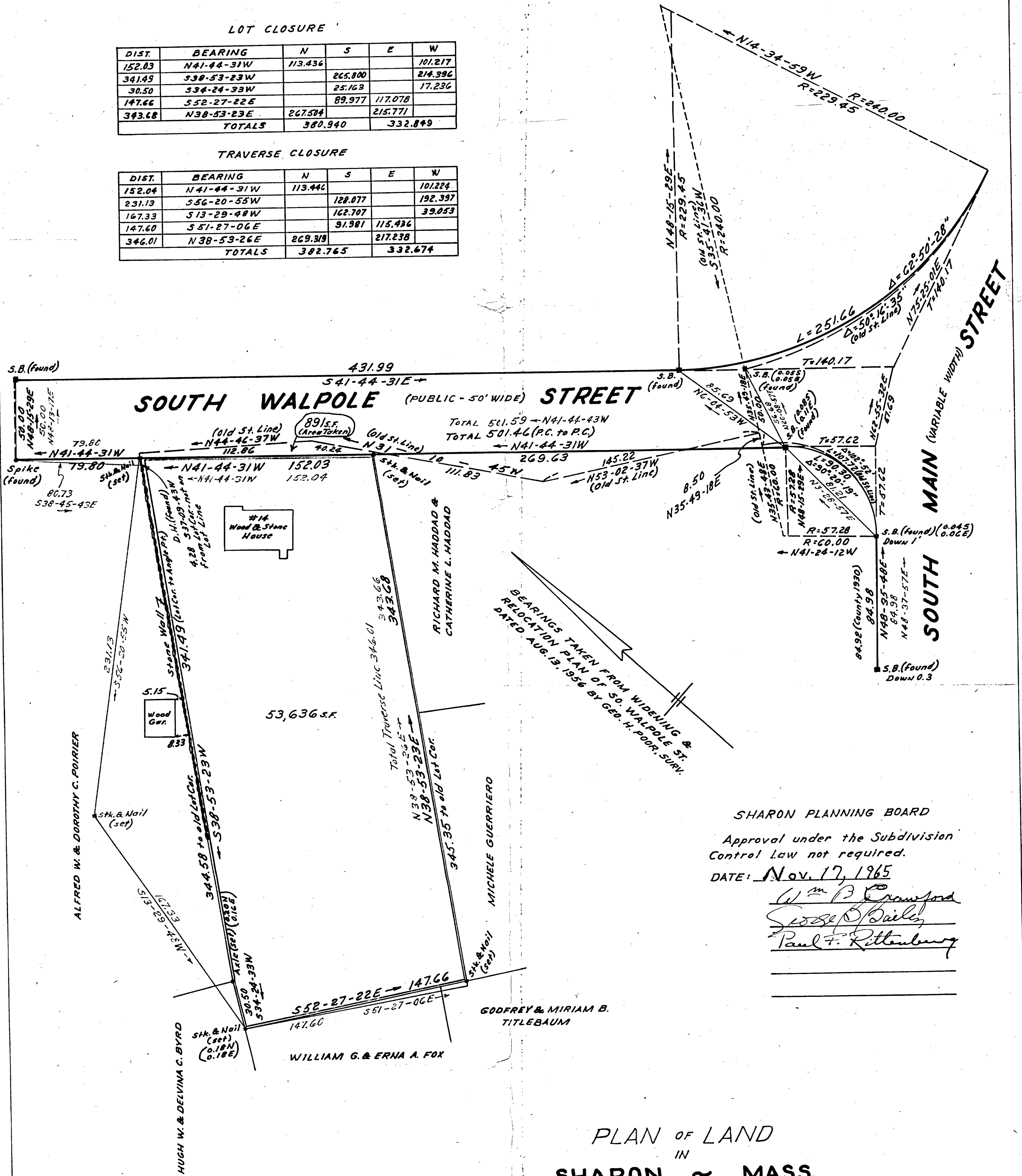


LOT CLOSURE

DIST.	BEARING	N	S	E	W
152.03	N41-44-31W	113.436			101.217
341.49	S38-53-23W		265.800		214.396
30.50	S34-24-33W		25.163		17.236
147.66	S52-27-22E		89.977	117.078	
343.68	N38-53-23E	267.504		215.771	
TOTALS		380.940		332.849	

TRAVERSE CLOSURE

DIST.	BEARING	N	S	E	W
152.04	N41-44-31W	113.446			101.224
231.13	S56-20-55W		128.077		192.397
167.33	S13-29-48W		162.707		39.053
147.60	S51-27-06E		91.981	115.436	
346.01	N38-53-26E	269.319		217.238	
TOTALS		382.765		332.674	



SHARON PLANNING BOARD
 Approval under the Subdivision Control Law not required.
 DATE: Nov. 17, 1965
Wm B Crawford
George P. Daily
Paul F. Rittenberg

PLAN OF LAND
 IN
SHARON ~ MASS.
 (OWNED BY: THOMAS CAVANAUGH ET UX)

I CERTIFY THAT THIS ACTUAL SURVEY WAS MADE ON THE GROUND IN ACCORDANCE WITH THE LAND COURT INSTRUCTIONS OF 1959 BETWEEN FEB. 23, 1965 AND NOV. 5, 1965.
 DATE: Nov. 12, 1959

Charles D. Thompson
 SURVEYOR FOR EVERETT M. BROOKS CO.
 259 WALNUT ST. NEWTONVILLE

SCALE: 1 IN. = 40 FT.
 EVERETT M. BROOKS CO.
 NEWTONVILLE • WAYLAND • W. ACTON

NOV. 12, 1965
 CIVIL ENGRS.
 MASSACHUSETTS

