

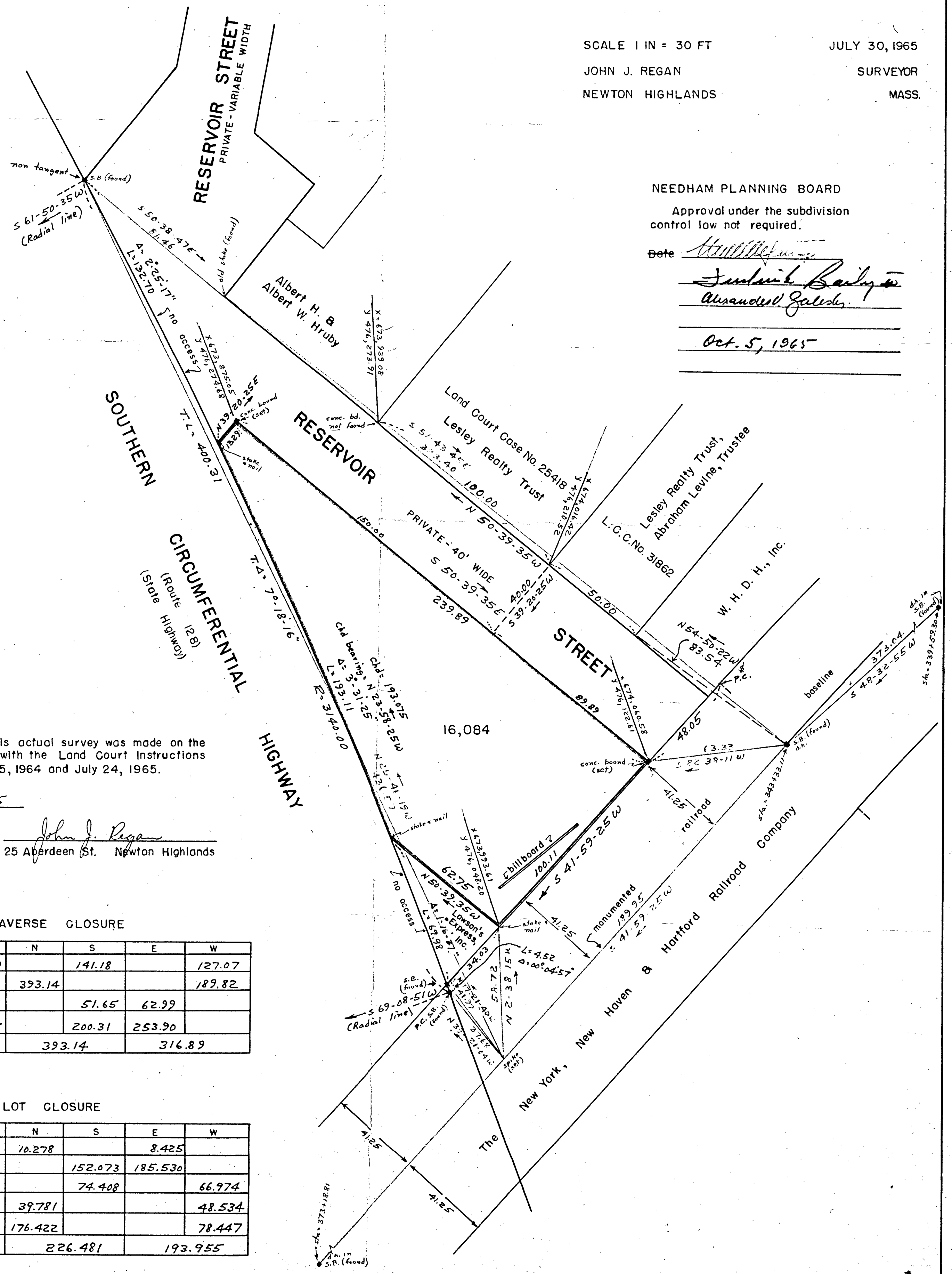
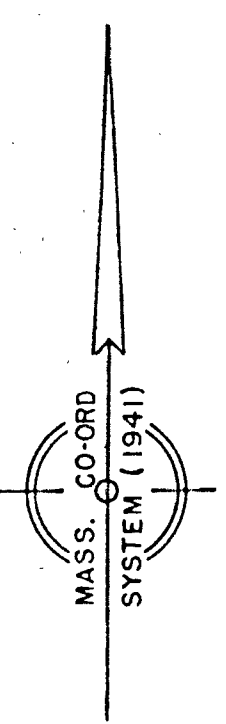
PLAN OF LAND IN NEEDHAM MASS.

SCALE 1 IN = 30 FT
JOHN J. REGAN
NEWTON HIGHLANDS

JULY 30, 1965
SURVEYOR
MASS.

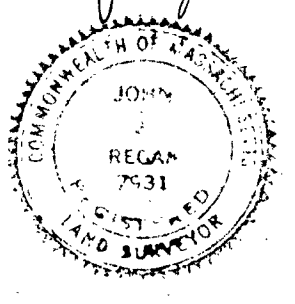
NEEDHAM PLANNING BOARD
Approval under the subdivision
control law not required.

Date



I certify that this actual survey was made on the ground in accordance with the Land Court Instructions of 1959 between Oct. 25, 1964 and July 24, 1965.

Date July 30, 1965
John J. Regan
25 Aberdeen St. Newton Highlands



TRAVERSE CLOSURE

Dist.	Bearing	N	S	E	W
189.95	S 41-59-25W		141.18		127.07
436.57	N 25-46-19W	393.14			189.82
81.46	S 50-38-47E		51.65	62.99	
323.40	S 51-43-45E		200.31	253.90	
Totals		393.14		316.89	

LOT CLOSURE

Dist.	Bearing	N	S	E	W
13.29	N 39-20-25E	10.278		8.425	
239.89	S 50-39-35E		152.073	185.530	
100.11	S 41-59-25W		74.408		66.974
62.75	N 50-39-35W	39.781			48.534
193.075	N 23-58-25W	176.422			78.447
Totals		226.481		193.955	