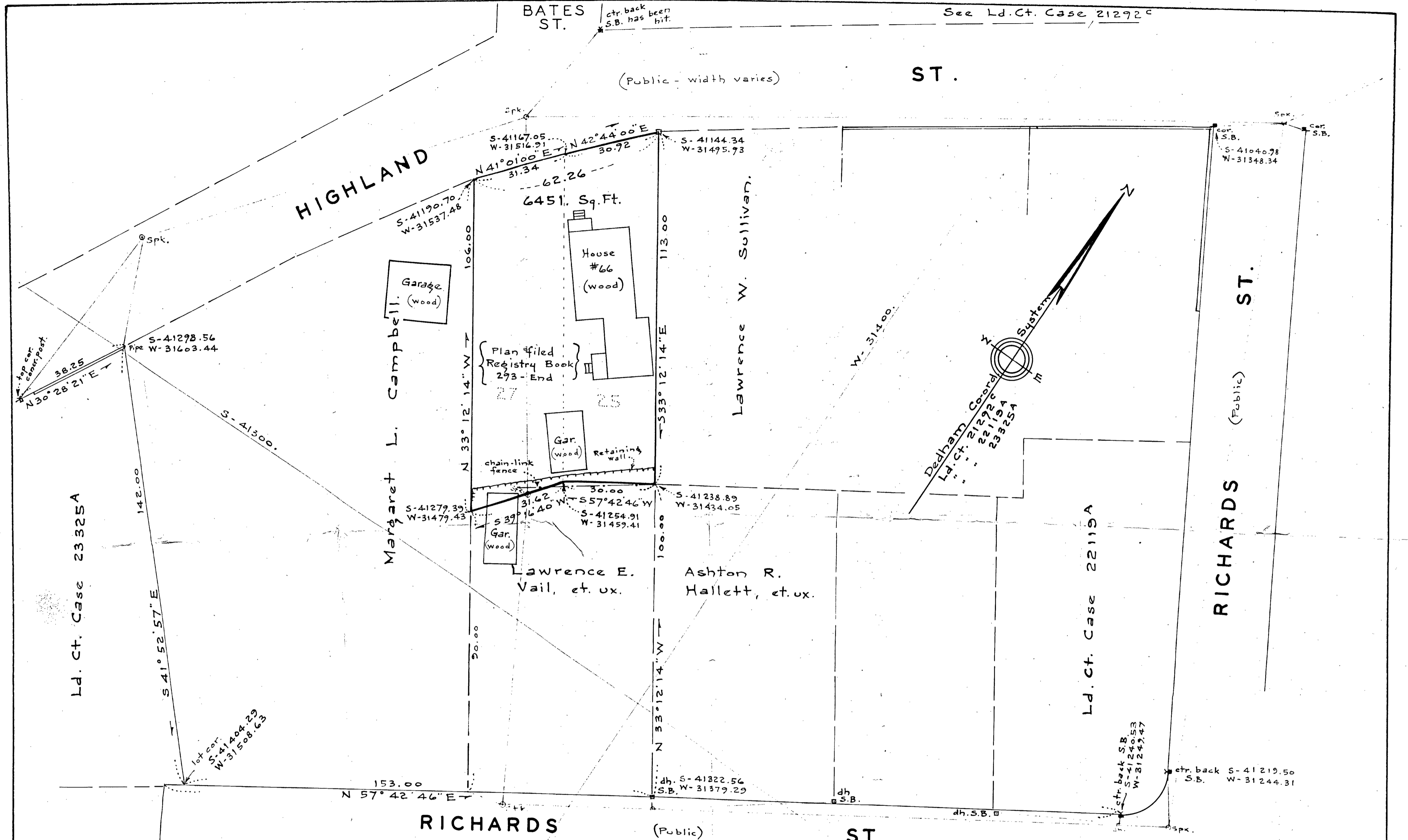


See Ld.Ct. Case 21292<sup>c</sup>



Ld. Ct. Case 23325A

Ld. Ct. Case 22119A

Approval Under The Subdivision  
Control Law NOT Required.

Dedham  
Planning Board  
Date

I certify that this actual  
survey was made on the ground  
in accordance with the Land  
Court instructions of 1959.

*Frank L. Cheney*  
Civil Engineer

Scale: 1 in. = 20 ft.



Plan of Land in  
DEDHAM, MASS.

Cheney Engineering Co. Inc.  
Needham, Mass.

Sept. 23, 1965.



Survey closure = 1 in 14509.