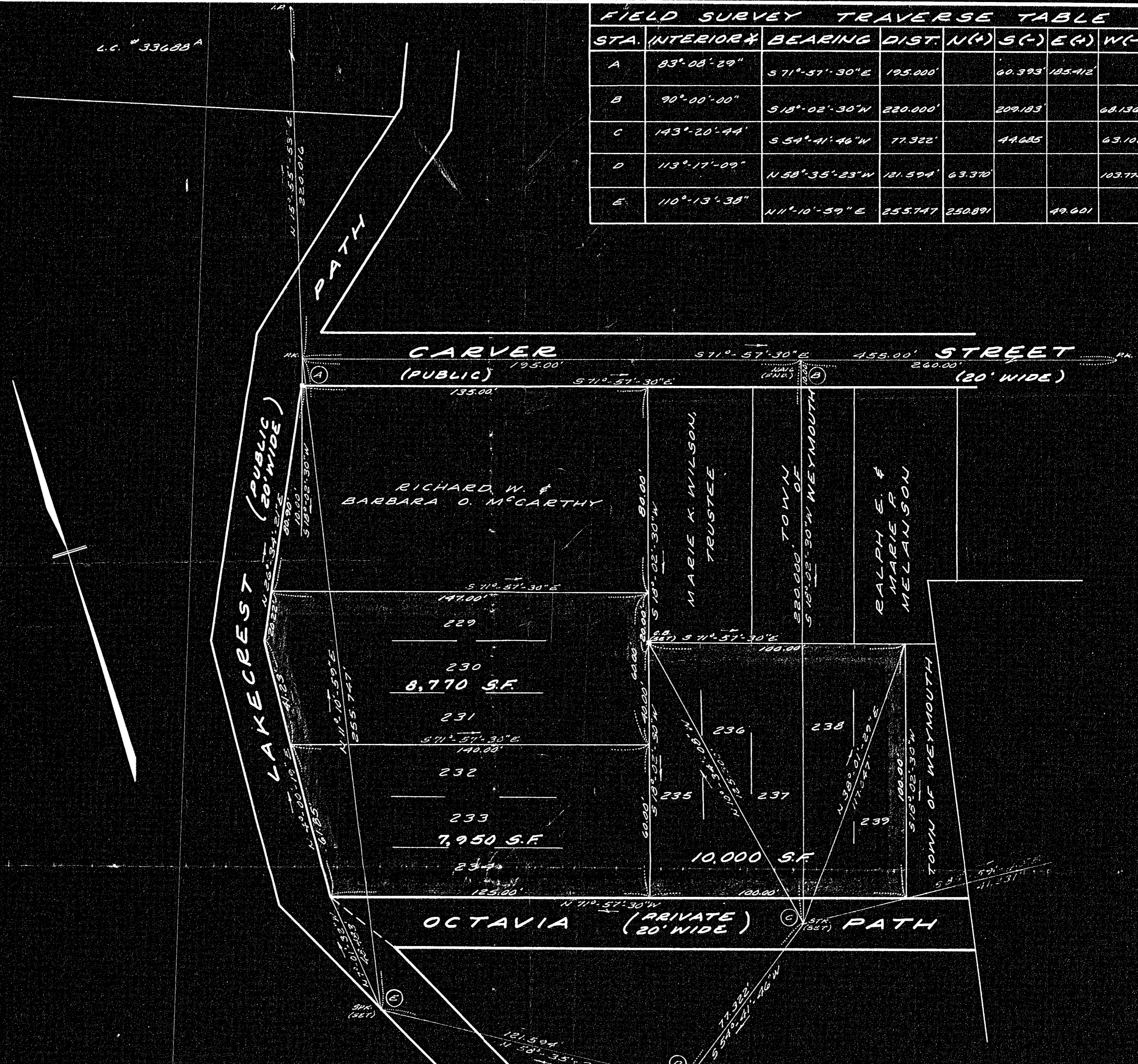


34305A

L.C. # 33688A

FIELD SURVEY TRAVERSE TABLE							
STA.	INTERIOR	BEARING	DIST.	N(+)	S(-)	E(+)	W(-)
A	83°-08'-29"	S 71°-57'-30"E	195.000'		60.393'	185.412'	
B	90°-00'-00"	S 18°-02'-30"W	220.000'		209.183'		68.136'
C	143°-20'-44"	S 54°-41'-46"W	77.322'		44.685'		63.102'
D	113°-17'-09"	N 58°-35'-23"W	121.594'	63.370'			103.775'
E	110°-13'-38"	N 11°-10'-59"E	255.747'	250.891'			49.601'



I CERTIFY THAT THIS ACTUAL SURVEY WAS MADE ON THE GROUND IN ACCORDANCE WITH THE LAND COURT INSTRUCTIONS OF 1959 ON JULY 30, 1965.

OCT. 30, 1965 *Lamont R. Healy*

APPROVAL UNDER THE SUBDIVISION CONTROL LAW NOT REQUIRED

DEC. 13, 1965 *William F. Skilton, Chairman*  
WEYMOUTH PLANNING BOARD  
1/10/66 *William F. Skilton, Chairman*

PLAN OF LAND IN  
WEYMOUTH, MASS.  
FOR  
JOSEPH F. GREENE  
SCALE: 1"=30'  
OCT. 30, 1965

DEGREE PLAN
Order
Traverse Method
Atlas
Drawn by
Math. by
Inspected by
Approved

LAMONT R. HEALY, INC. - LAND SURVEYORS  
50, WEYMOUTH, MASS.

34305  
MAY BE CALLED  
7-4-66  
UES  
Weymouth, Mass.  
-01.99.  
mail  
10 Copy

34305A