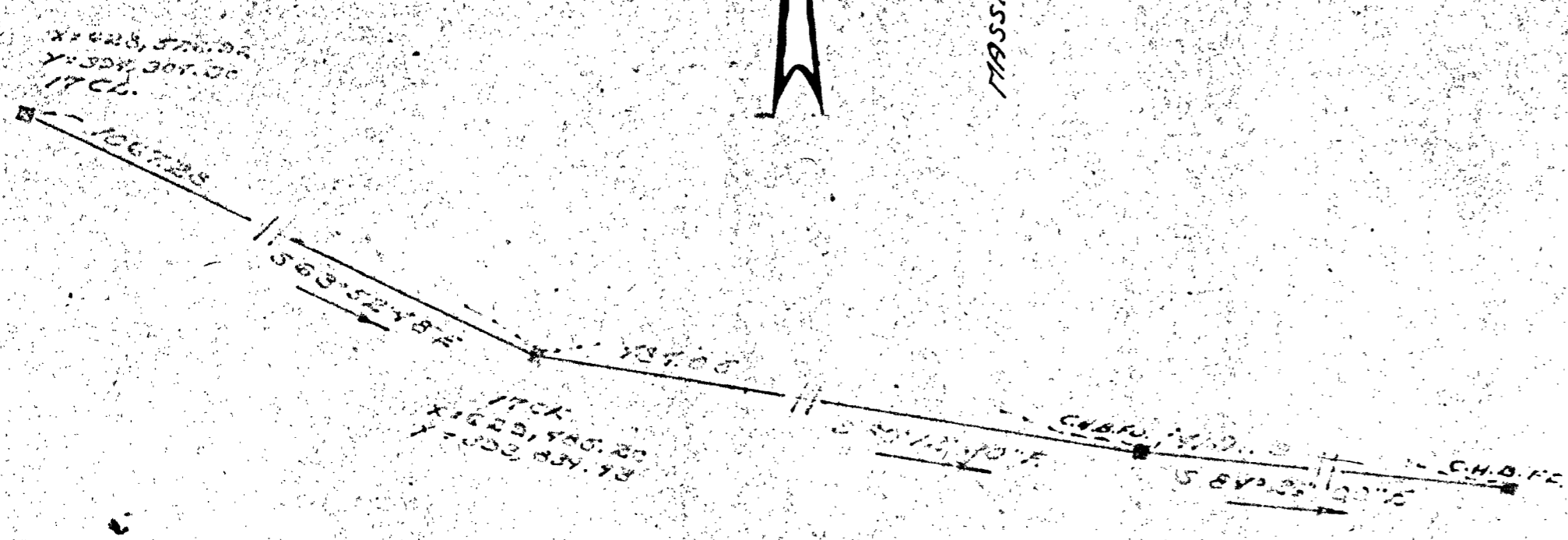
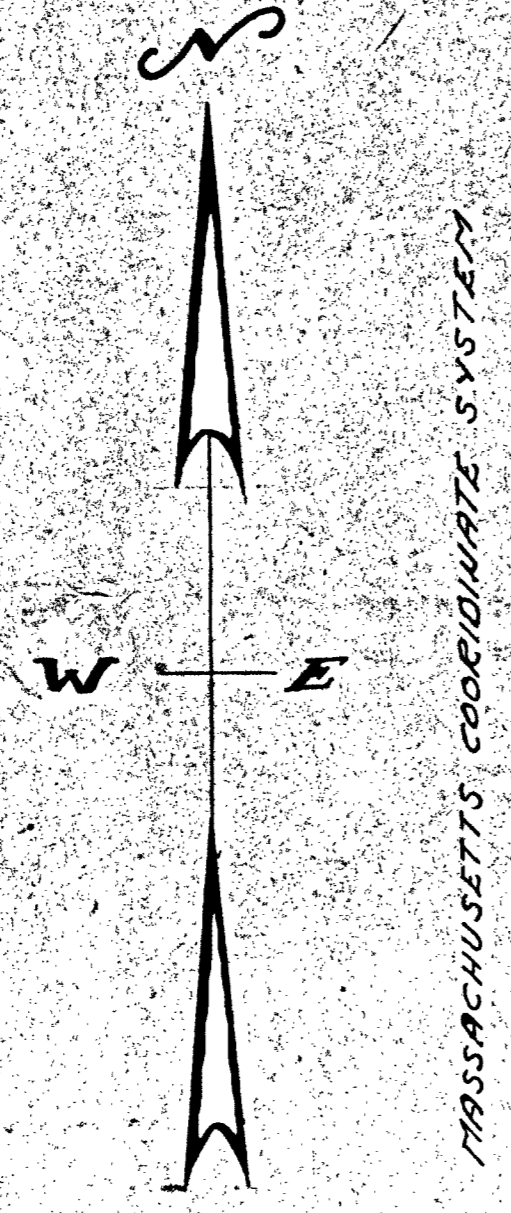
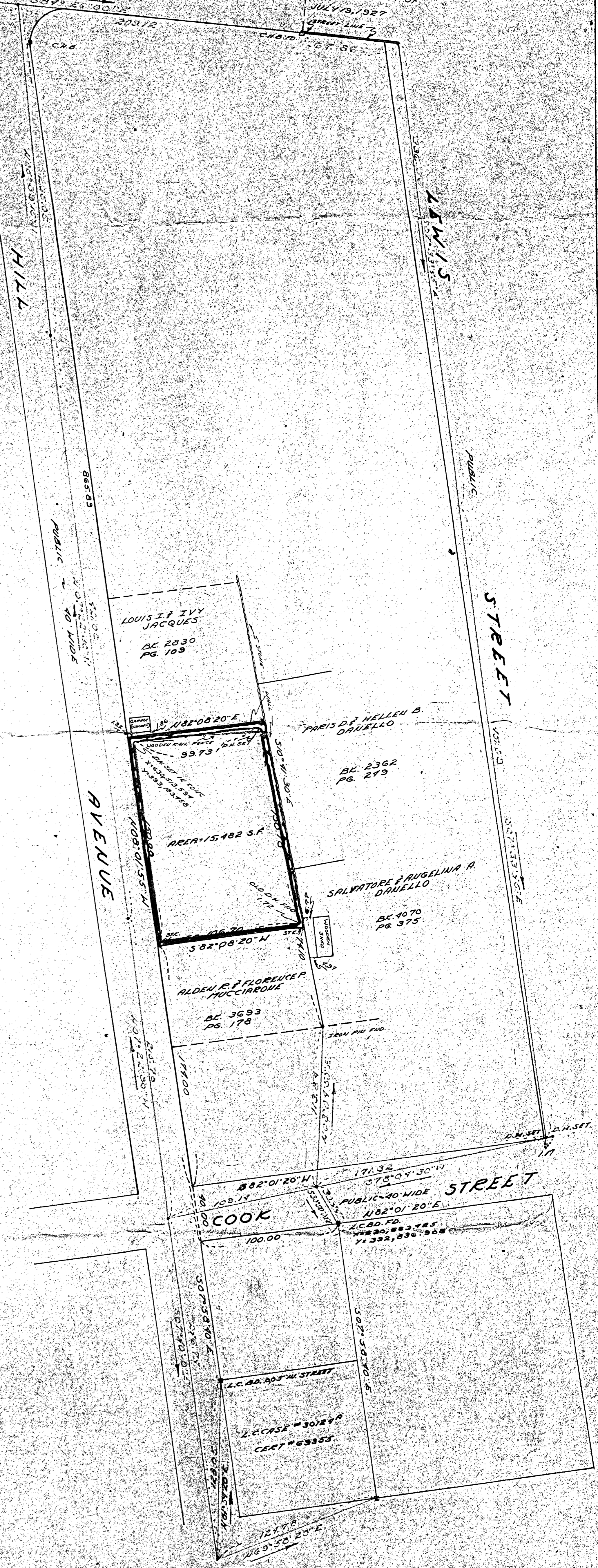


EAST CENTRAL COUNTY LAYOUT 1935
60' WIDE STREET

STATE OF MASS.
HIGHWAY LAYOUT OF
JULY 19, 1927
COURT LIT. 2



TIE IN TO U.S.C.G.S. CONTROL POINTS
NOT TO SCALE



PLAN OF LAND
IN
FRANKLIN, MASS.
SEPT. 1965 SCALE 1"=40'

SUMNER E. ELLSWORTH SURVEYOR
SHOET, STREET FRANKLIN, MASS.



APPROVAL UNDER THE SUBDIVISION CONTROL
LAW NOT REQUIRED.
John R. Gandy
Joseph A. Anderson
Charles J. Mahaly

I CERTIFY THAT THIS ACTUAL SURVEY WAS MADE
ON THE GROUND IN ACCORDANCE WITH THE MASS.
COURT INSTRUCTIONS OF 1835 ON OR BETWEEN
MAY 15, 1965 AND SEPT 24, 1965.
DATE SEPT 24, 1965
Sumner E. Ellsworth

BEING A MAJORITY OF THE BOARD OF
MASS. PLANNING BOARD
DATE NOV. 17, 1965