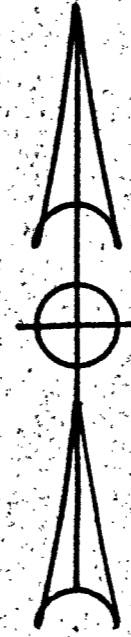
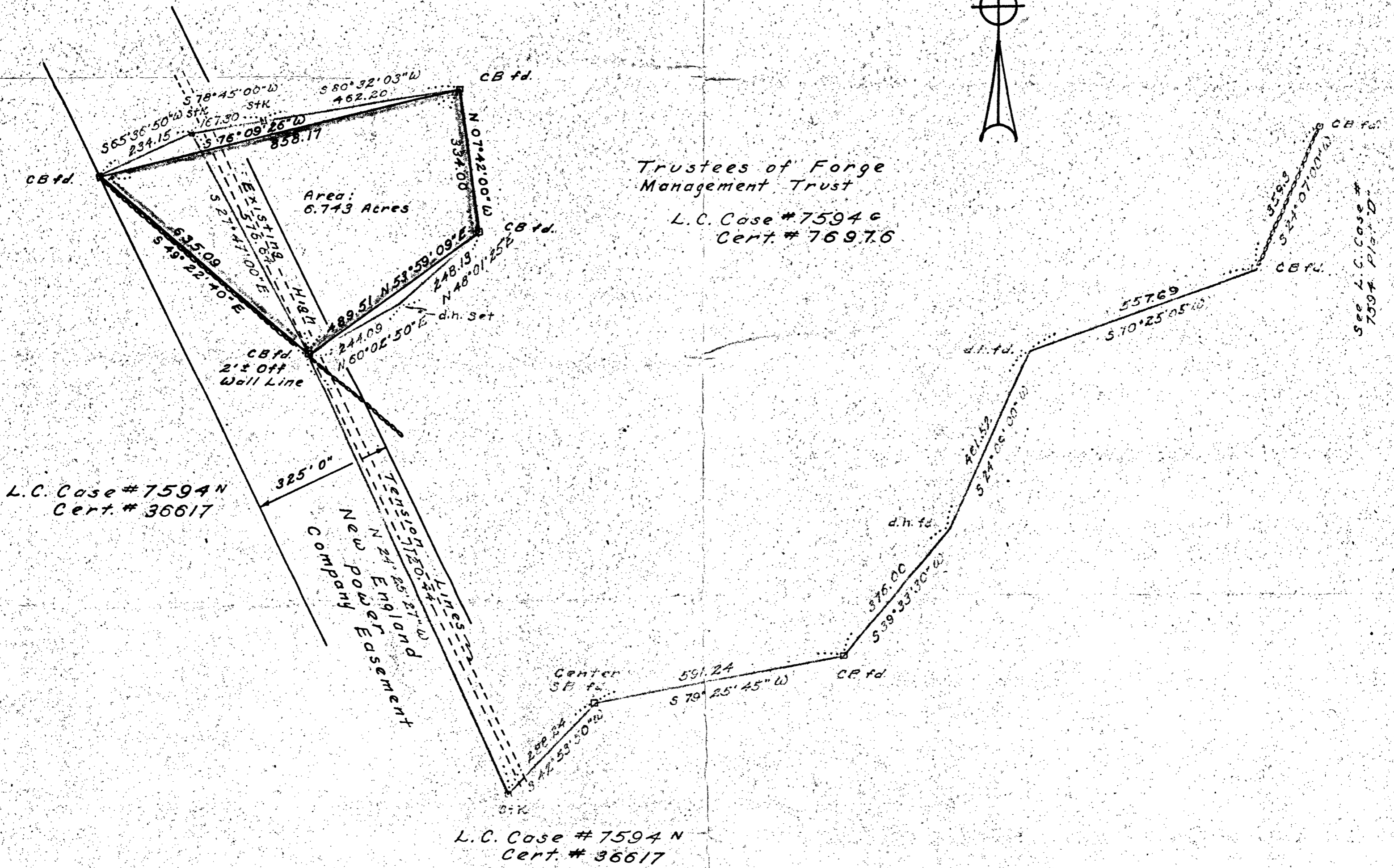


Trustees of Forge
Management Trust
L.C. Case # 7594 G
Cert. # 76976

TRUE
NORTH



Trustees of Forge
Management Trust
L.C. Case # 7594 G
Cert. # 76976



L.C. Case # 7594 N
Cert. # 36617

L.C. Case # 7594 N
Cert. # 36617

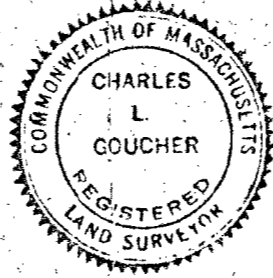
PLAN OF LAND in FRANKLIN
SCALE 200 FEET TO AN INCH
Eastman & Corbett Inc.

Milford, Mass.

April 8, 1965

Approval Under the Subdivision
Control Law Is Not Required

John R. Pabla
Roger A. Rondeau
Roman C. Restano



I Certify That This Actual
Survey Was Made On the
Ground In Accordance With the
Land Court Instructions
Of 1959 Between March 24, 1965
And March 31, 1965

Being A Majority of the
Franklin, Mass. Planning Board
Date: Aug. 31, 1965

Charles L. Goucher

8 Park Terrace
Milford, Mass.

Eastman & Corbett Inc.
Civil Engineers
Milford, Mass.
Charles L. Goucher
Registered Land Surveyor